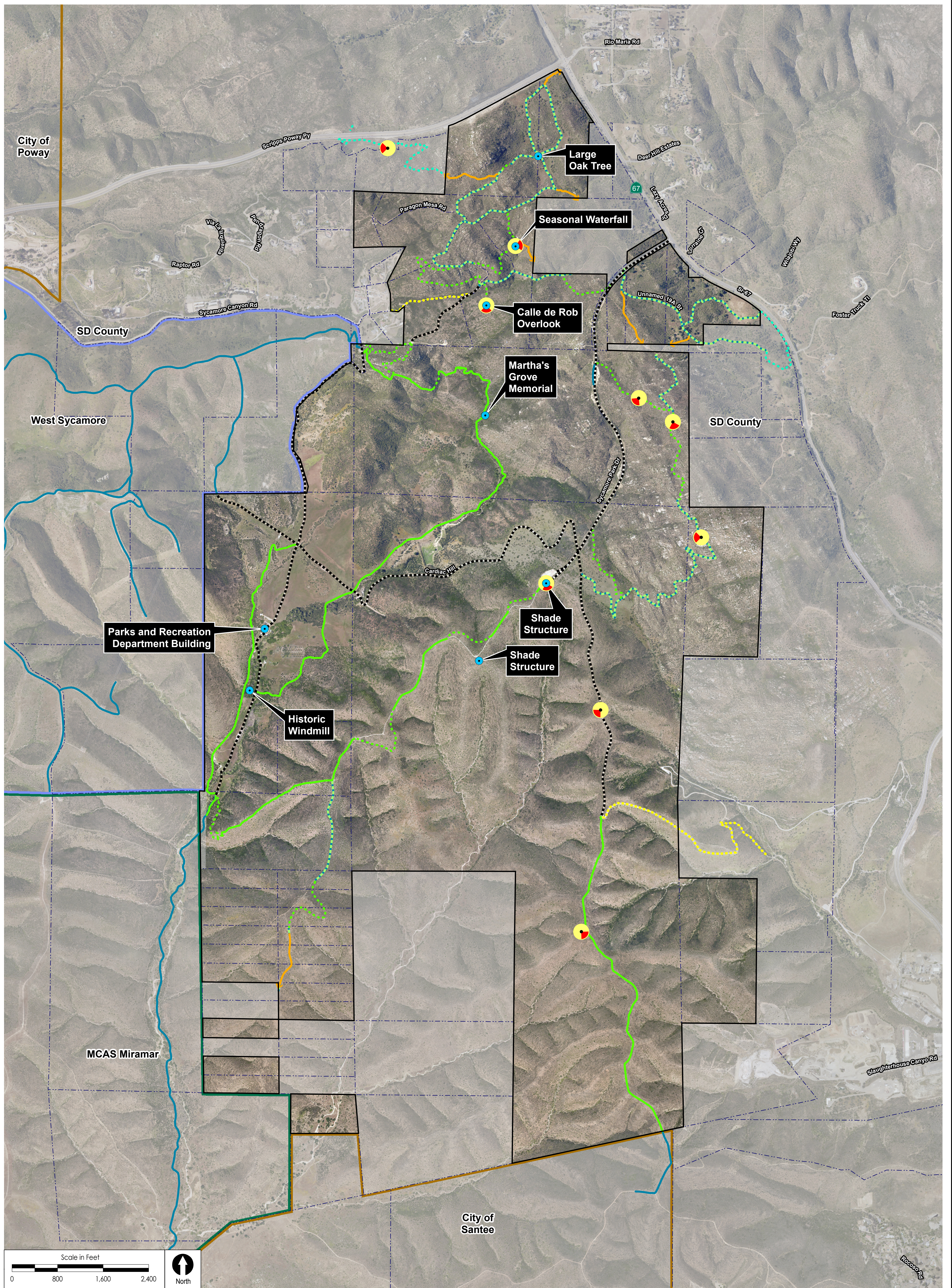
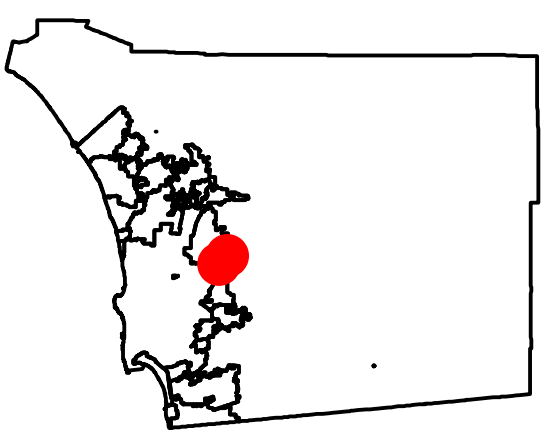


# SYCAMORE PAP: VIEWS AND DESTINATIONS



**Location**



- Destinations
- View
- Preserve Boundary
- Parcel Boundaries
- Potential Future Trail Connection
- - - - - Access Road
- - - - - Maintenance Road
- Existing Formal Trail
- - - - - Proposed CTMP Trail
- · - · - Proposed Trail on Existing Disturbed Areas
- · - · - Proposed Trail
- Other



Public Meeting #2: 3/28/2019

\*All trails are subject to change based on environmental review.

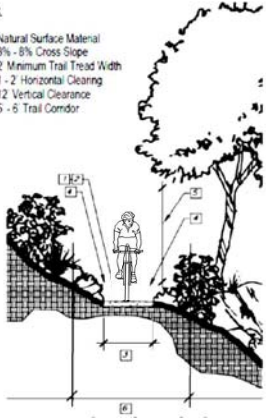
# TRAIL EXPERIENCE TYPES

Based on [Community Trails Master Plan](#) Guidelines and [Preserve Trail Guidelines](#)

## Type: Primitive

Legend:

1. Natural Surface Material
2. 3% - 8% Cross Slope
3. 2' Minimum Trail Tread Width
4. 1 - 2' Horizontal Clearance
5. 12' Vertical Clearance
6. 5 - 6' Trail Corridor

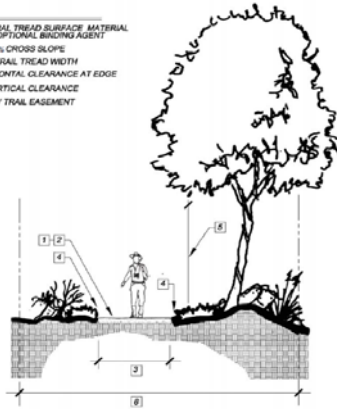


RECOMMENDED SURFACE MATERIAL: SUITABLE NATIVE SOIL  
RECOMMENDED GRADE: 0-8%, up to 20% allowable depending on topography and environmental constraints\*

## Type: Rural

LEGEND:

- 1) NATURAL TREAD SURFACE MATERIAL WITH OPTIONAL BINDING AGENT
- 2) 3% - 8% CROSS SLOPE
- 3) 4' - 8' TRAIL TREAD WIDTH
- 4) HORIZONTAL CLEARANCE AT EDGE
- 5) 12' VERTICAL CLEARANCE
- 6) 15' - 20' TRAIL EASEMENT

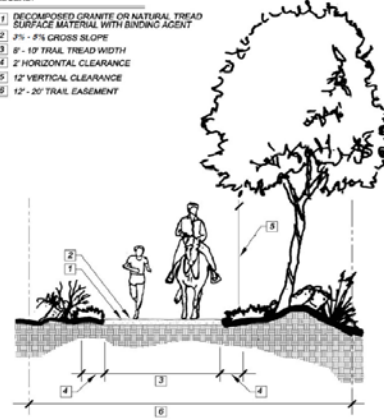


RECOMMENDED SURFACE MATERIAL: DG/BINDING AGENT OR SUITABLE NATIVE SOIL  
RECOMMENDED GRADE: <15%

## Type: Suburban

LEGEND:

- 1) DECOMPOSED GRANITE OR NATURAL TREAD SURFACE MATERIAL WITH BINDING AGENT
- 2) 3% - 4% CROSS SLOPE
- 3) 8' - 10' TRAIL TREAD WIDTH
- 4) 2' HORIZONTAL CLEARANCE
- 5) 12' VERTICAL CLEARANCE
- 6) 12' - 20' TRAIL EASEMENT



RECOMMENDED SURFACE MATERIAL: DG/BINDING AGENT  
RECOMMENDED GRADE: <10%

# IEWS & DESTINATIONS

- a) Looking south towards Santee Lakes
- b) Ridge Trail Overlook
- c) Large oak tree
- d) Views towards Goodan Ranch from northern Sycamore Canyon



a



b

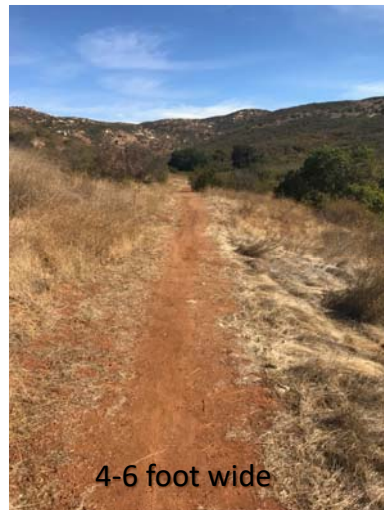


c



2-4 foot wide

Existing Condition: Eastern Sycamore Canyon  
2-4 foot tread width would be maintained  
Grade ranges from 5-30% along trail



4-6 foot wide

Existing Condition: Lower Martha's Grove Trail  
4 foot tread width would be maintained  
Grade ranges from 0-15% along trail



8-10 foot wide

Existing Condition: Sycamore Canyon Road  
10-12 foot tread would be maintained, serves as a shared multi-use trail and maintenance access road



d