



# SANTA MARIA CREEK GREENWAY PROJECT

---

## Implementation Plan Update Public Meeting

County of San Diego Department of Parks and Recreation  
October 29, 2025





# Department of Parks and Recreation

**Lizzy Bendrick**  
Trails Program Manager

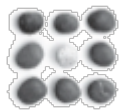
**Matt Sanford**  
Region Manager Ramona/ Mountains

**Shannon Quigley-Raymond**  
Environmental Planner

**Alicia Watkins**  
Supervising Park Ranger Ramona  
Region

## Consultant Support

**DUDEK**



**SCHMIDT  
DESIGN  
GROUP**

**SANTA MARIA CREEK GREENWAY PROJECT**





# Agenda

## Background

## Implementation Plan

- **Opportunities and Constraints**
- **Community Feedback**
- **Trail Alignments**
- **Trail Concepts**
- **Design Guidelines**
- **Estimated Costs**

## Next Steps

## Q&A



# Background

**SANTA MARIA CREEK GREENWAY PROJECT**







# What is a Greenway?

Outdoor spaces connecting people and places. Each greenway is unique, reflecting the character of the communities it connects. Greenways typically include 4 elements:

- Trail
- Amenities
- Connections
- Conservation

**SANTA MARIA CREEK GREENWAY PROJECT**





# Vision for the Santa Maria Creek Greenway








SANTA MARIA CREEK GREENWAY PROJECT





# Location

## EXISTING LAND USES

-  Santa Maria Creek
-  Open Space Parks
-  Commercial/Office
-  Education
-  Multi Family Housing

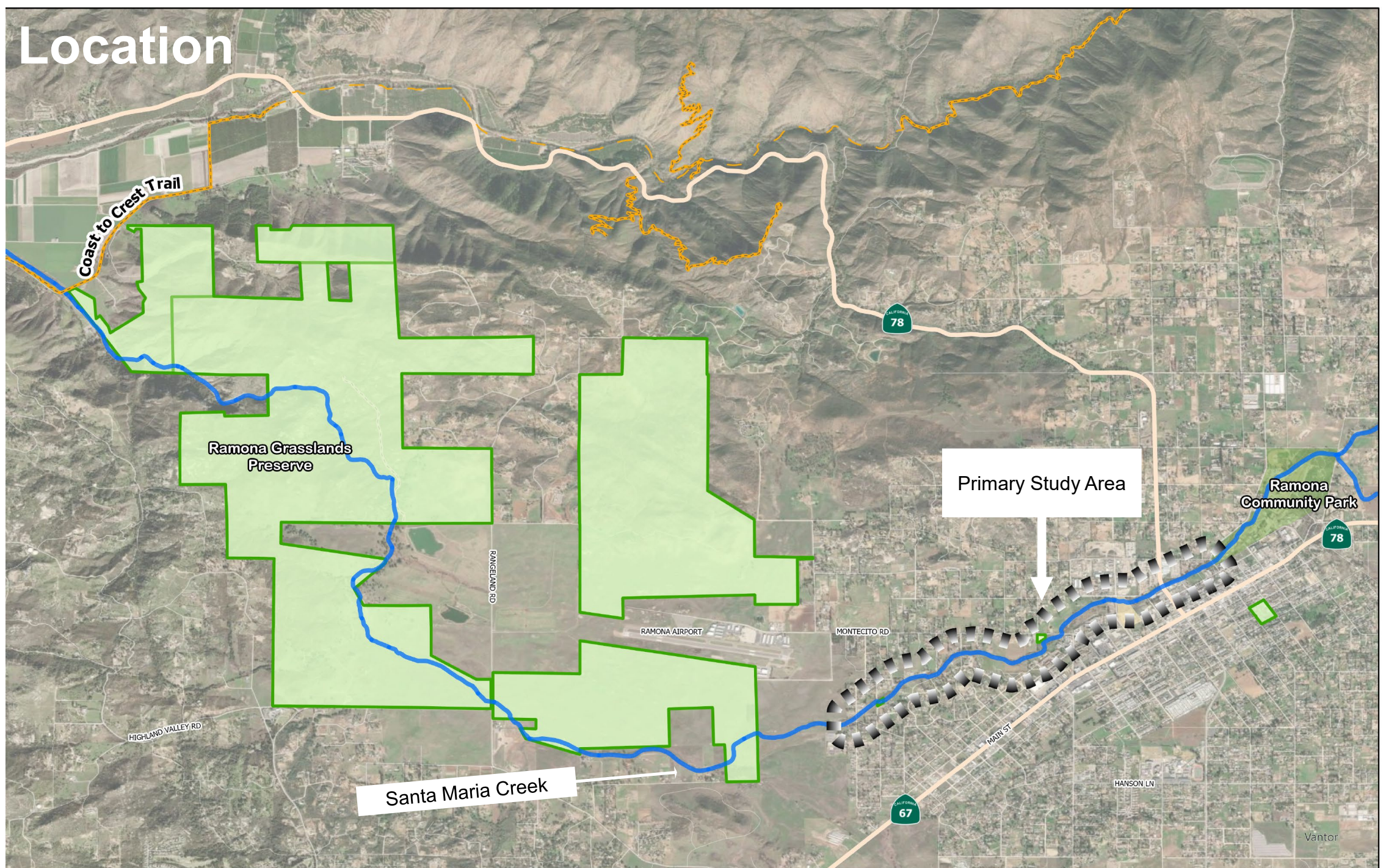
## POINTS OF INTEREST

-  1 Ramona Grasslands
-  2 Santa Maria Creek Staging Area
-  3 Ramona Library
-  4 Ramona Community Park
-  5 Collier County Park
-  6 Olive Pierce Middle School
-  7 Ramona High School





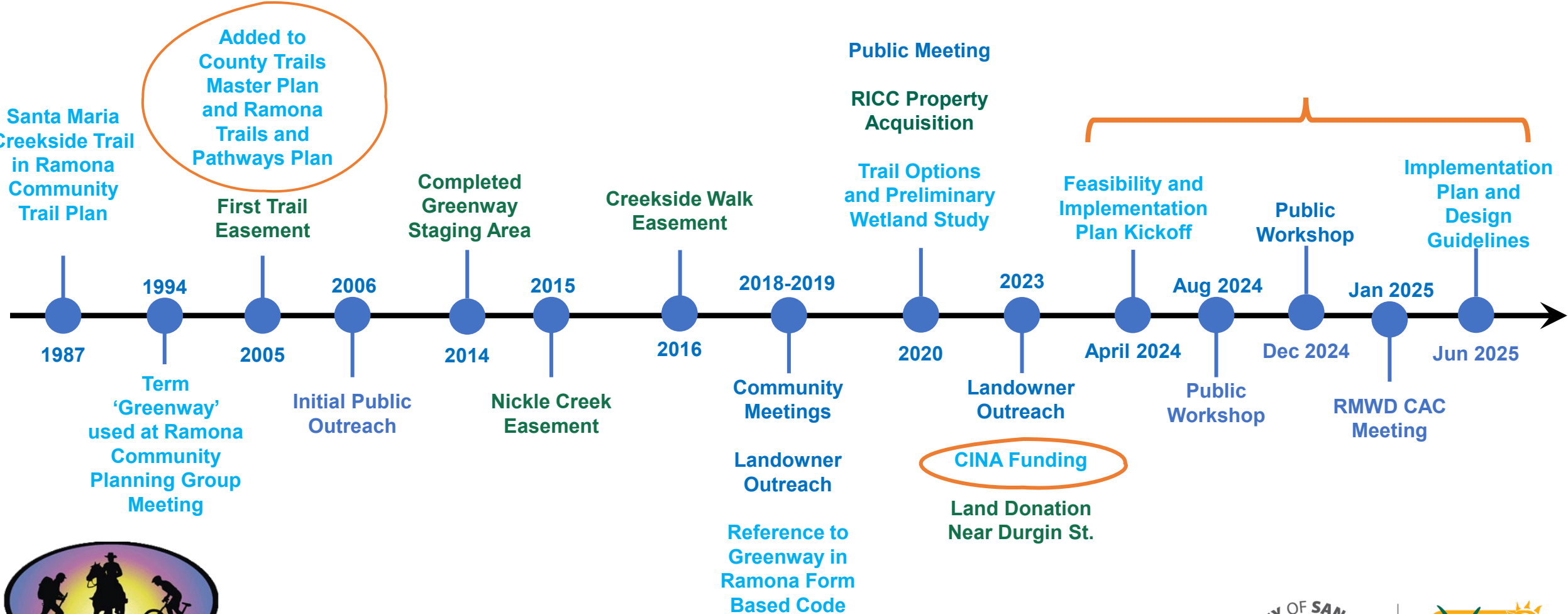
# Location





# Project History

LEGEND: PLANNING, TRAIL SYSTEM, OUTREACH



## SANTA MARIA CREEK GREENWAY PROJECT



# What is an Implementation Plan?

- Roadmap that outlines the steps, resources and timelines for completing a project.
- Serves as the step-by-step guide for achieving the long-range objective of completing the 2.5-mile long Greenway trail system in Ramona.





# Implementation Plan



SANTA MARIA CREEK GREENWAY PROJECT





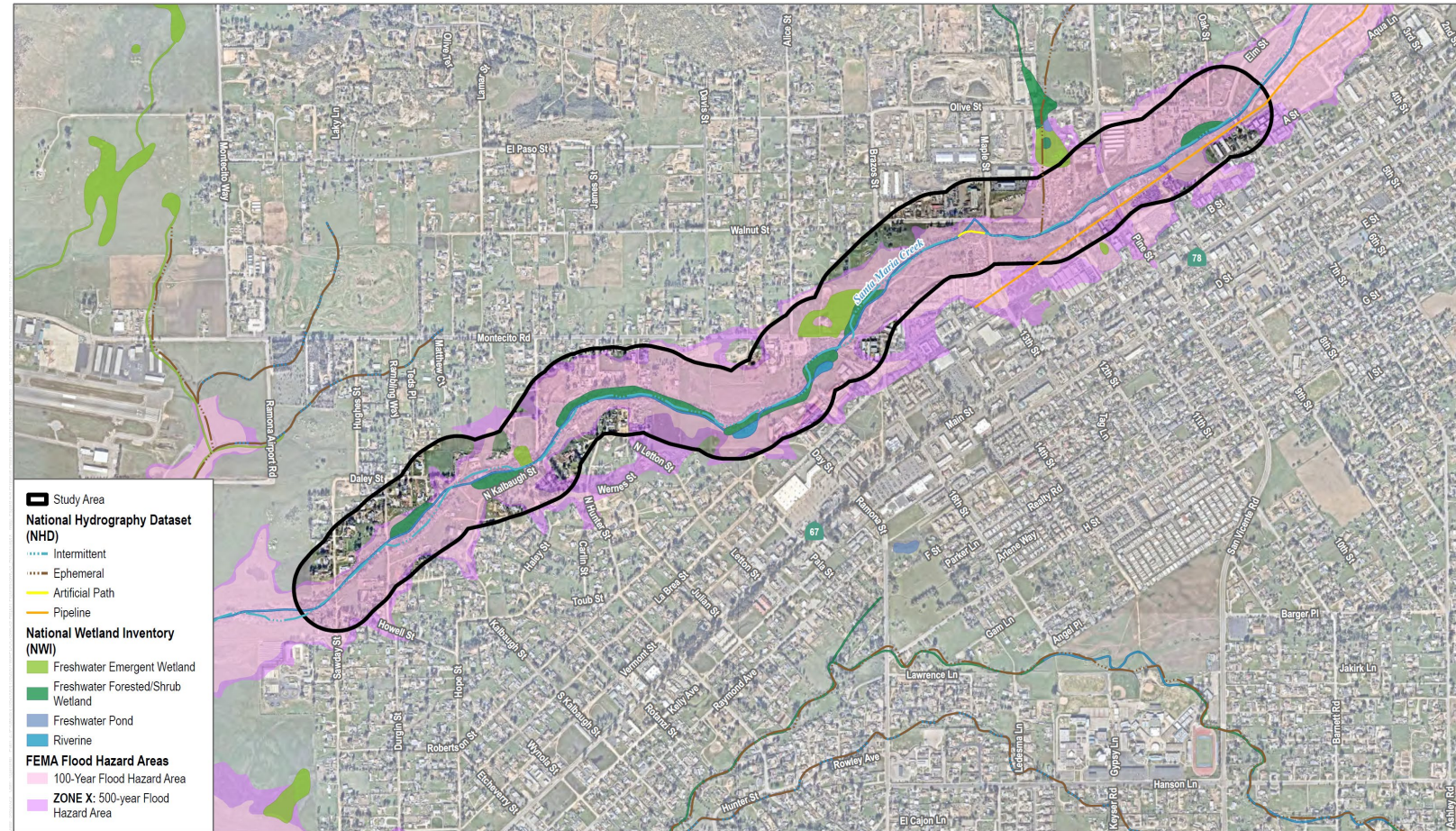
# Opportunities and Constraints

## Natural Resources:

- Aquatic
- Agriculture
- Field/Pasture
- Non-Native Grasslands
- Southern Riparian Scrub

## Flooding:

- Floodplain
- Floodway





# Opportunities and Constraints

## Land Use and Ownership

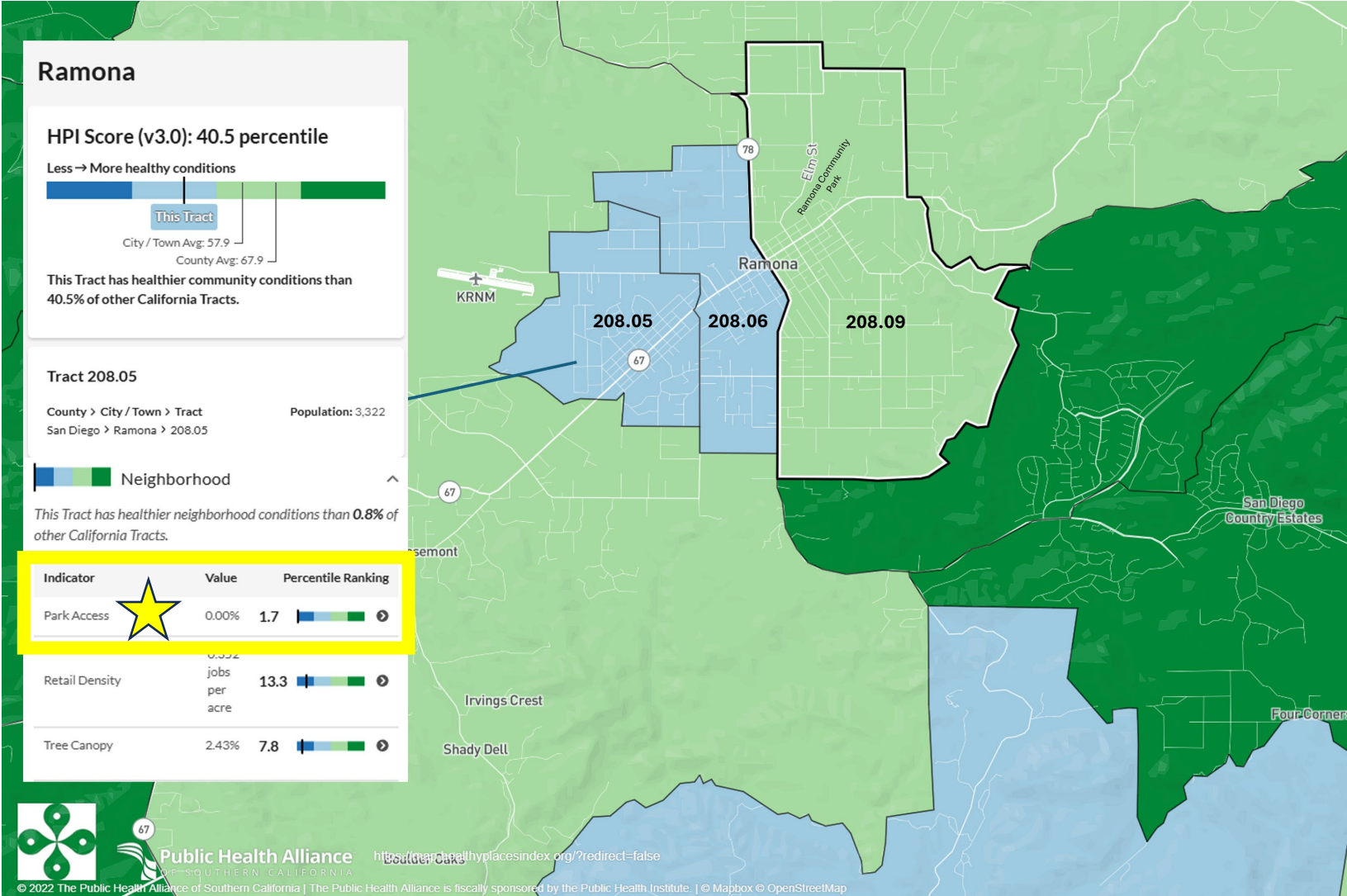
- Public Agencies
- Private

## Roadway Crossings

- 7<sup>th</sup>
- SR 78
- 13<sup>th</sup>
- Montecito
- Durgin
- Sawday



# Opportunities and Constraints



Parks, recreation and green spaces within walkable distance (1/2 mile)

Percent of land with tree canopy (cooling, shade, aesthetics)





# Opportunities and Constraints

## Community Resources & Connectivity

- Ramona Community Park
- Staging Area
- Community Centers
- Ramona Grasslands
- Main Street



# Community Workshops

## What we heard....

- Provide Horse Trailer Parking
- Enhance Road Crossing Safety
- Restroom Facilities
- Water Access
- Multi-Modal: Pedestrian, Equestrian, Bicycle
- Hitching Posts & Mounting Blocks
- ADA Access
- Distance Markers
- Natural Surface Trail / DG
- Shade
- Seating
- Artful Accents
- Wayfinding / Interpretive Signage





# Community Workshops

## What we heard....

- Ensure the trail is clean, free of trash and well maintained
- Make the trail ADA accessible where possible (RICC site & near Sawday/Ramona Grasslands)
- Prevent motorized vehicle access - use boulders or another feature
- Consider playground access especially near multi-family housing
- Keep the trail narrow so it feels intimate in some areas
- Conserve and celebrate the natural resources and remove invasive species
- Stay as close to the creek as possible
- Consider safety of trail users (exit and entrance points clearly marked)
- Importance of privacy for easements on residential properties
- SR 78 crossing safety





# Trail Alignments



**SANTA MARIA CREEK GREENWAY PROJECT**





# Trail Alignment Key Points

- Connections to existing and planned community resources
- All alignments require some voluntary trail easements
- Flexibility to adapt based on easements acquired. Multiple options mean there are alternative routes that can be linked together in pieces

## Trail Colors

**Primary Alignment**

**Alternate 1**

**Alternate 2** (in limited areas)

**Bypass**

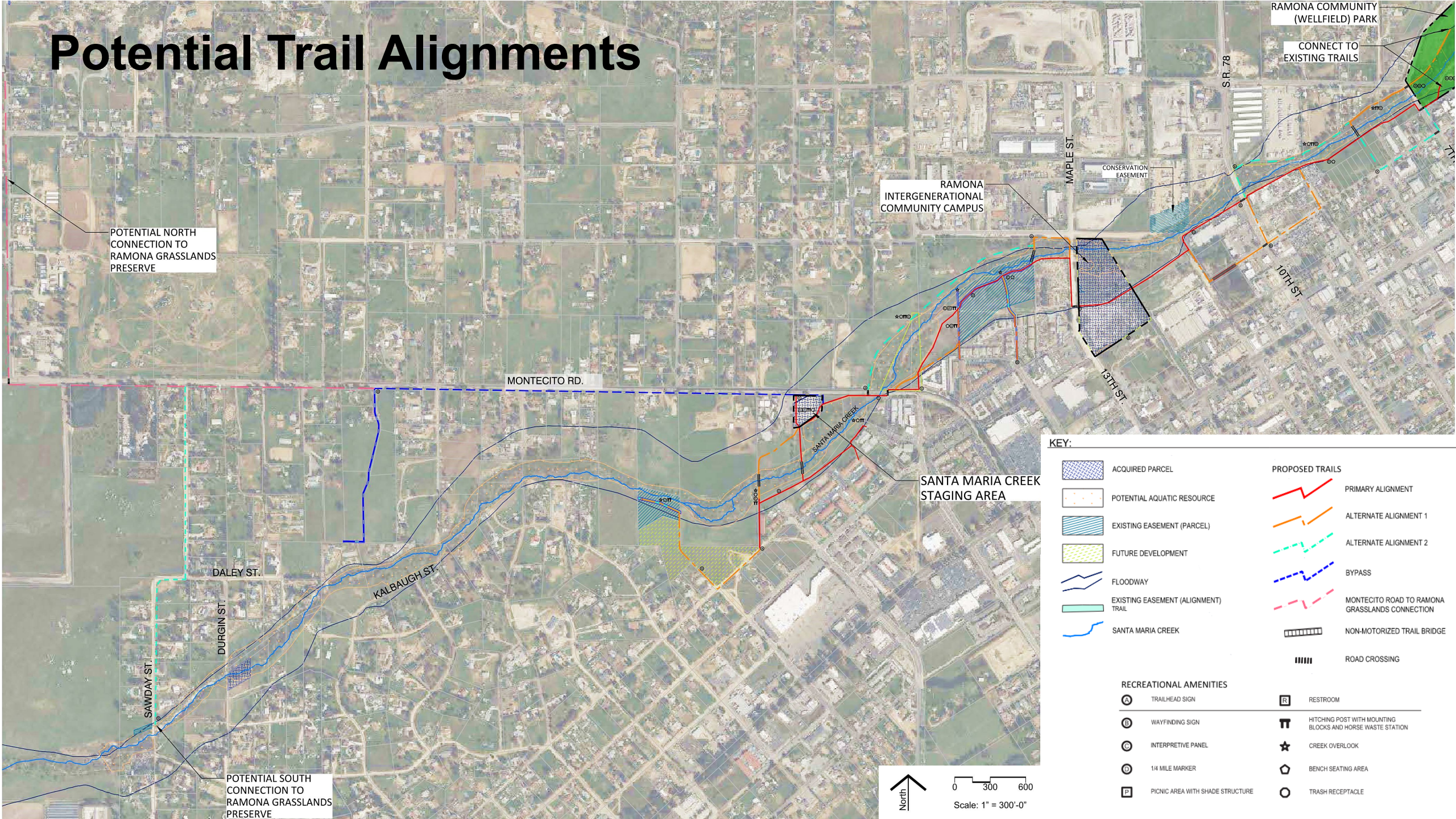
**Montecito Rd to Ramona Grasslands**

**Gap Closure**





# Potential Trail Alignments

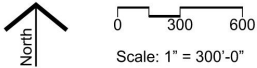


KEY:

- |  |                               |  |                 |  |  |
|--|-------------------------------|--|-----------------|--|--|
|  | ACQUIRED PARCEL               |  | PROPOSED TRAILS |  | PRIMARY ALIGNMENT                              |
|  | POTENTIAL AQUATIC RESOURCE    |  |                 |  | ALTERNATE ALIGNMENT 1                          |
|  | EXISTING EASEMENT (PARCEL)    |  |                 |  | ALTERNATE ALIGNMENT 2                          |
|  | FUTURE DEVELOPMENT            |  |                 |  | BYPASS   |
|  | FLOODWAY                      |  |                 |  | MONTECITO ROAD TO RAMONA GRASSLANDS CONNECTION |
|  | EXISTING EASEMENT (ALIGNMENT) |  |                 |  | NON-MOTORIZED TRAIL BRIDGE                     |
|  | SANTA MARIA CREEK             |  |                 |  | ROAD CROSSING                                  |

RECREATIONAL AMENITIES

- |  |                                  |  |  |
|--|----------------------------------|--|--|
|  | TRAILHEAD SIGN                   |  | RESTROOM   |
|  | WAYFINDING SIGN                  |  | HITCHING POST WITH MOUNTING BLOCKS AND HORSE WASTE STATION |
|  | INTERPRETIVE PANEL               |  | CREEK OVERLOOK   |
|  | 1/4 MILE MARKER                  |  | BENCH SEATING AREA   |
|  | PICNIC AREA WITH SHADE STRUCTURE |  | TRASH RECEPTACLE   |





KEY:

POTENTIALLY INTERESTED LAND OWNER

POTENTIAL AQUATIC RESOURCE

FLOODWAY

SEWERLINE EASEMENT

SANTA MARIA CREEK

PROPOSED TRAILS

PRIMARY ALIGNMENT

ALTERNATE ALIGNMENT 1

ALTERNATE ALIGNMENT 2

NON-MOTORIZED TRAIL BRIDGE

ROAD CROSSING

RECREATIONAL AMENITIES

TRAILHEAD SIGN

WAYFINDING SIGN

INTERPRETIVE PANEL

1/4 MILE MARKER

PICNIC AREA WITH SHADE STRUCTURE

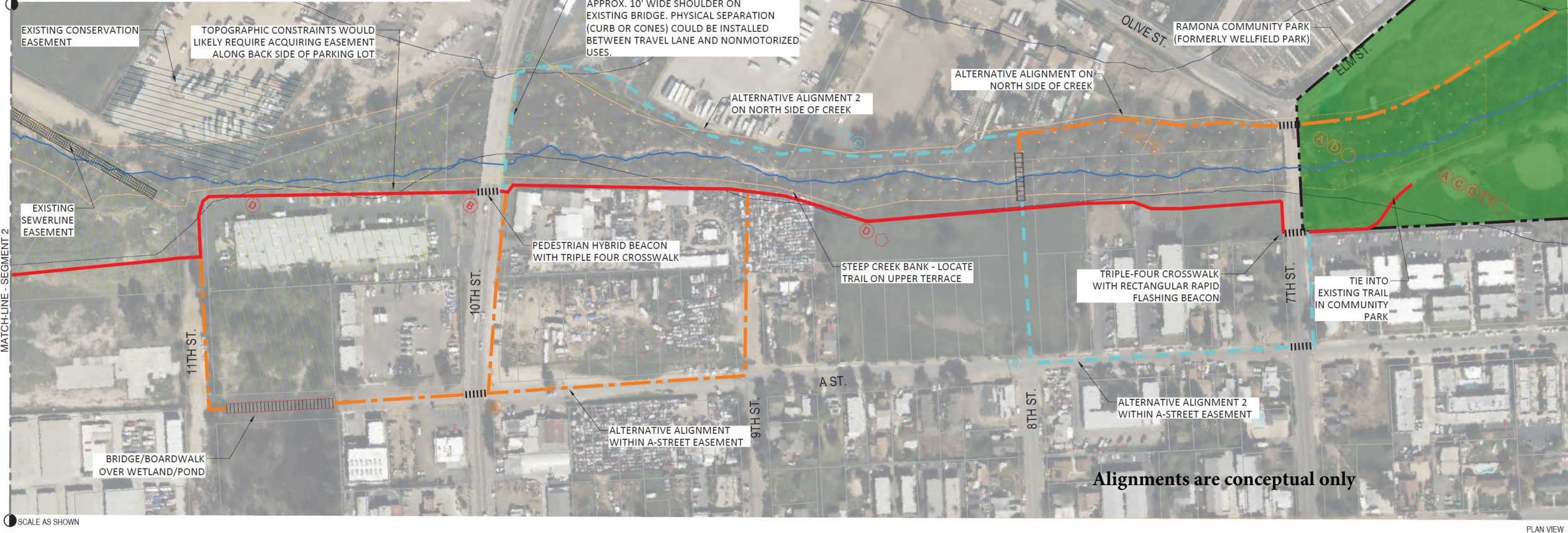
RESTROOM

HITCHING POST WITH MOUNTING BLOCKS AND HORSE WASTE STATION

CREEK OVERLOOK

BENCH SEATING AREA

TRASH RECEPTACLE





KEY:

POTENTIALLY INTERESTED LAND OWNER

ACQUIRED PARCEL

POTENTIAL AQUATIC RESOURCE

EXISTING EASEMENT (PARCEL)

FLOODWAY

TRAIL EASEMENT (ALIGNMENT)

SEWERLINE EASEMENT

SANTA MARIA CREEK

PROPOSED TRAILS

PRIMARY ALIGNMENT

ALTERNATE ALIGNMENT 1

ALTERNATE ALIGNMENT 2

BYPASS

NON-MOTORIZED TRAIL BRIDGE

ROAD CROSSING

EXISTING SANTA MARIA CREEK STAGING AREA

MONTECITO RD.

TRIPLE FOUR CROSSWALK WITH RECTANGULAR RAPID FLASHING BEACON

ALTERNATE ROUTE WOULD AVOID REPLACEMENT OF MONTECITO ROAD FOOTBRIDGE

WALNUT ST.

ALTERNATIVE ALIGNMENT AND CREEK CROSSING

MULTIPLE CONSTRAINTS MAY REQUIRE ACCESS THROUGH DEVELOPED PORTION OF THIS PROPERTY

NEW 13TH STREET BRIDGE OVER THE CREEK. BRIDGE INCLUDES 8' WIDE PEDESTRIAN PATH. PRIMARY PATH FOLLOWS EXISTING GRADE BESIDE NEW BRIDGE

MAPLE ST.

EXISTING EASEMENT

TRIPLE FOUR CROSSWALK

EXISTING SEWERLINE EASEMENT

PRIMARY ALIGNMENT

ALTERNATIVE ALIGNMENT

EXISTING AD HOC COMMUNITY TRAILS

FOLLOW SEWERLINE EASEMENT

13TH ST.

RICCO SITE

SCALE AS SHOWN

PLAN VIEW

RECREATIONAL AMENITIES

A	TRAILHEAD SIGN	R	RESTROOM
B	WAYFINDING SIGN	Π	HITCHING POST WITH MOUNTING BLOCKS AND HORSE WASTE STATION
C	INTERPRETIVE PANEL	★	CREEK OVERLOOK
D	1/4 MILE MARKER	⬢	BENCH SEATING AREA
F	PICNIC AREA WITH SHADE STRUCTURE	○	TRASH RECEPTACLE



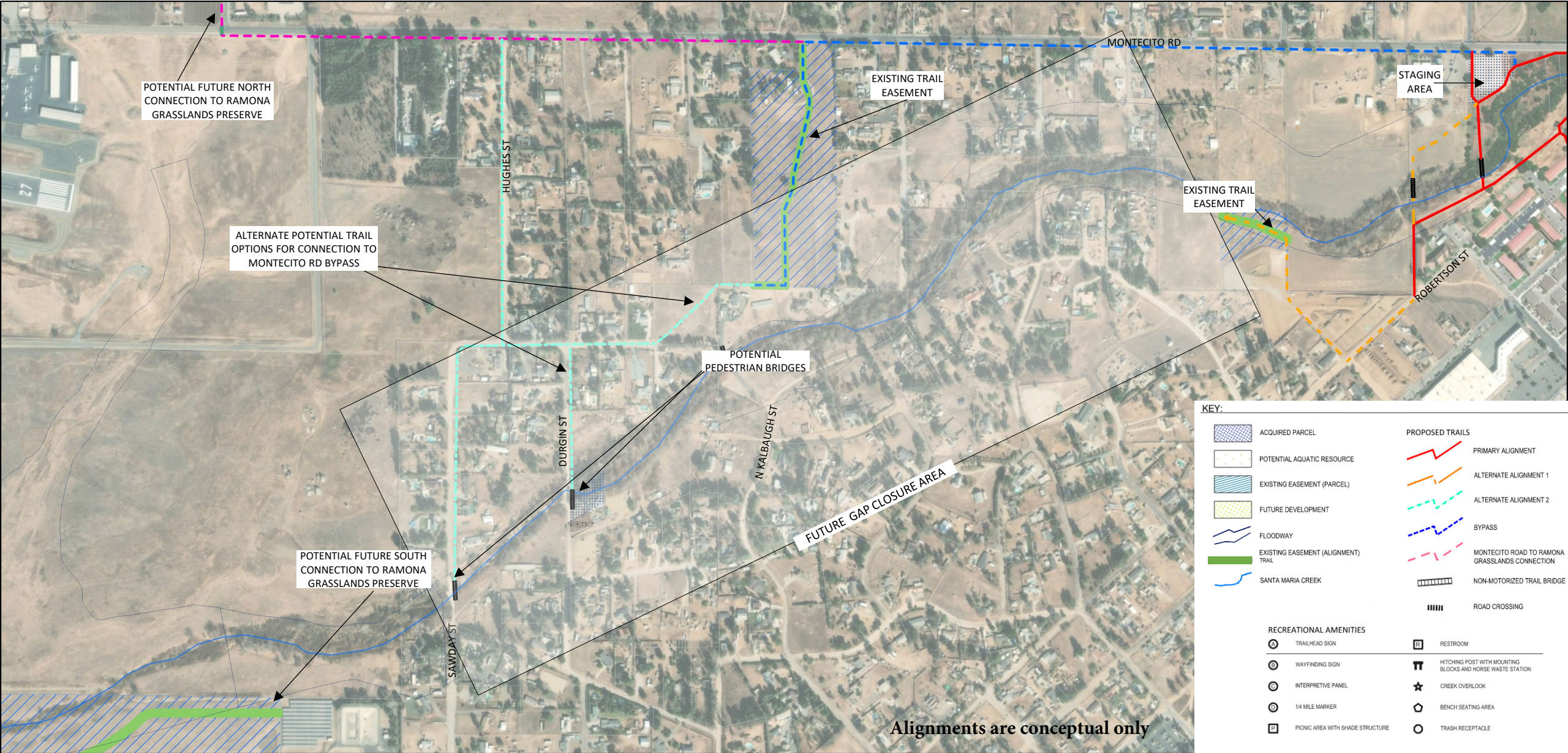
- 1 NEW PICNIC AREA W/SHADE STRUCTURE
- 2 NEW RESTROOMS
- 3 NEW DECOMPOSED GRANITE TRAIL SURFACE
- 4 NEW HITCHING POST
- 5 PARKING AREA FOR TRAILERS
- 6 EXISTING STAGING AREA SIGN
- 7 EXISTING PICNIC AREA
- 8 EXISTING TRAIL SIGN
- 9 EXISTING GRAVEL PARKING LOT



NOTE: THIS RENDERING IS A CONCEPT VISUALIZATION ONLY

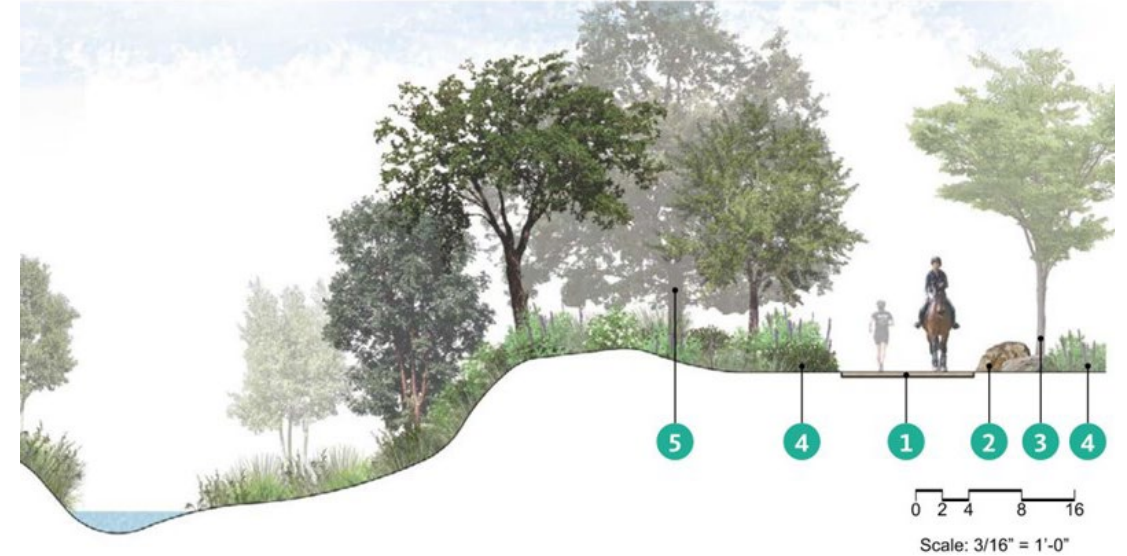


# Gap Closure Area – Conceptual Trail Connections





# Trail Concepts





# Conceptual Trail Rendering

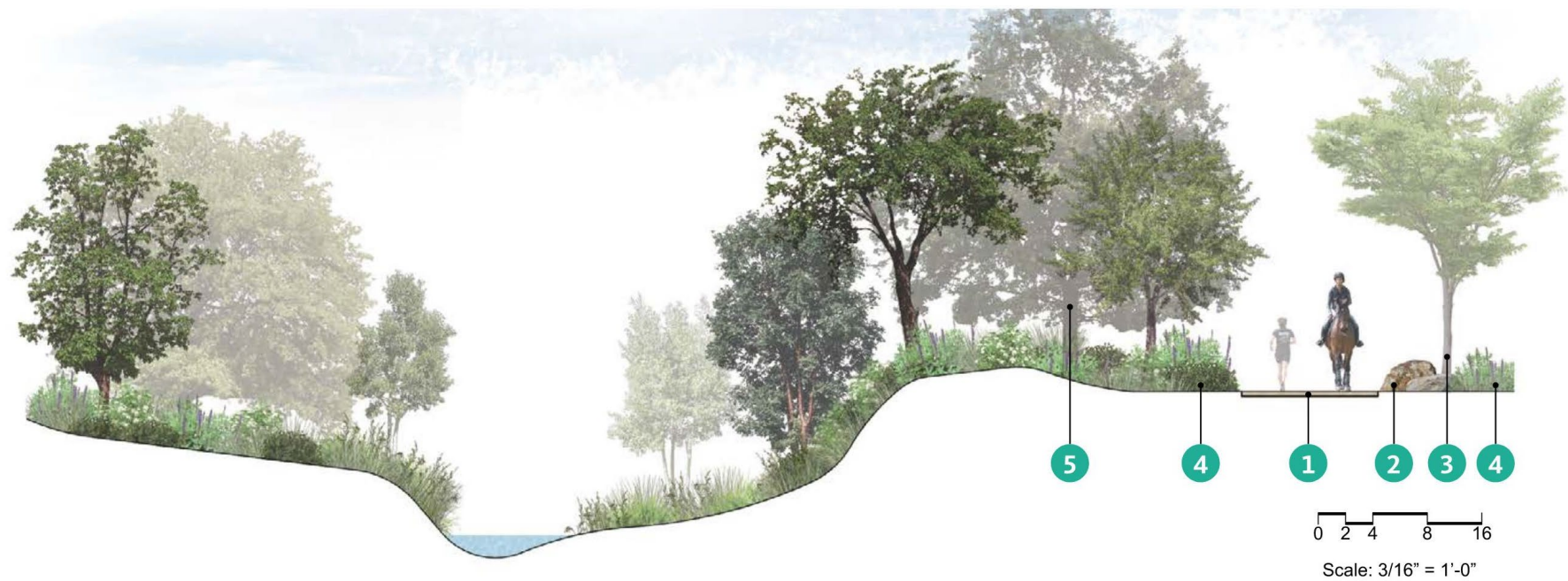


**SANTA MARIA CREEK GREENWAY PROJECT**





# Conceptual Trail Section



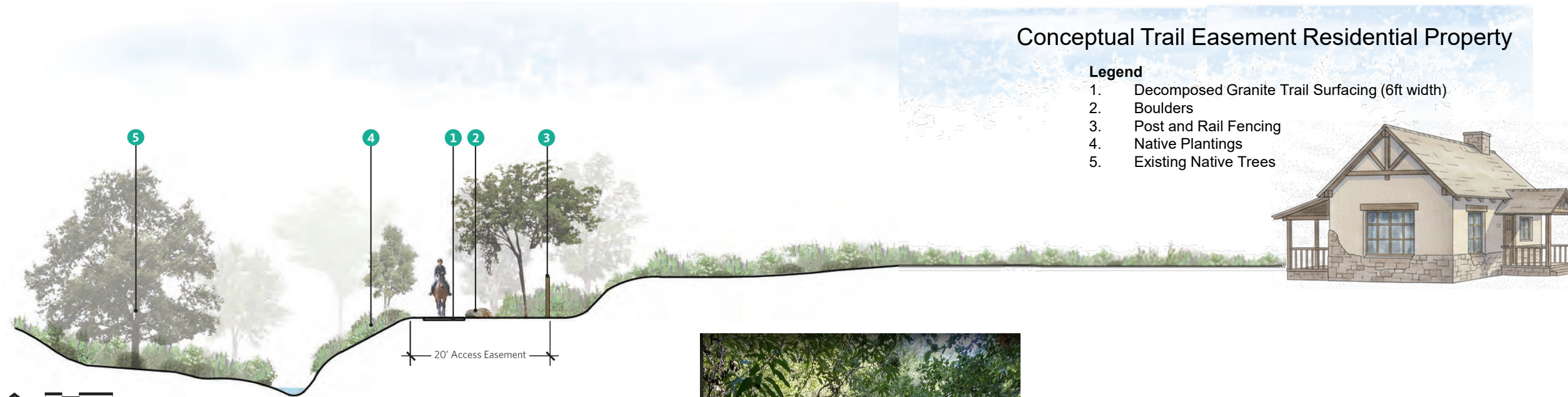
## LEGEND

- 1 Decomposed Granite Trail Surfacing (10 ft width typ.)
- 2 Boulders, typ.
- 3 Native Trees, typ.
- 4 Native Plantings, typ.
- 5 Existing Native Trees, typ.





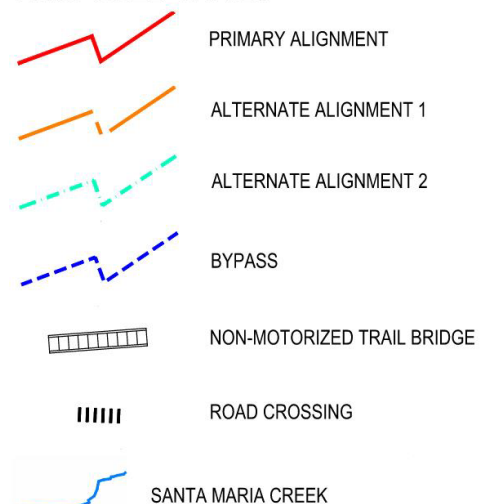
# Conceptual Trail Easements



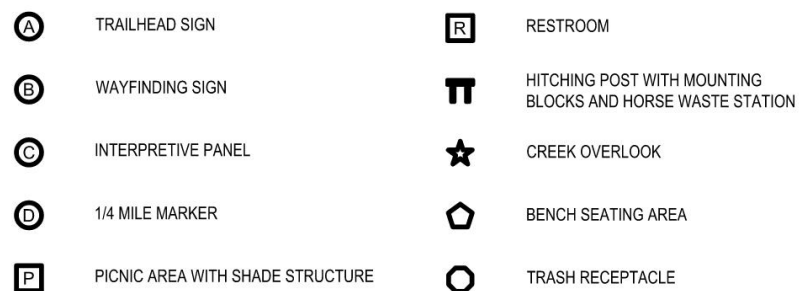


# KEY:

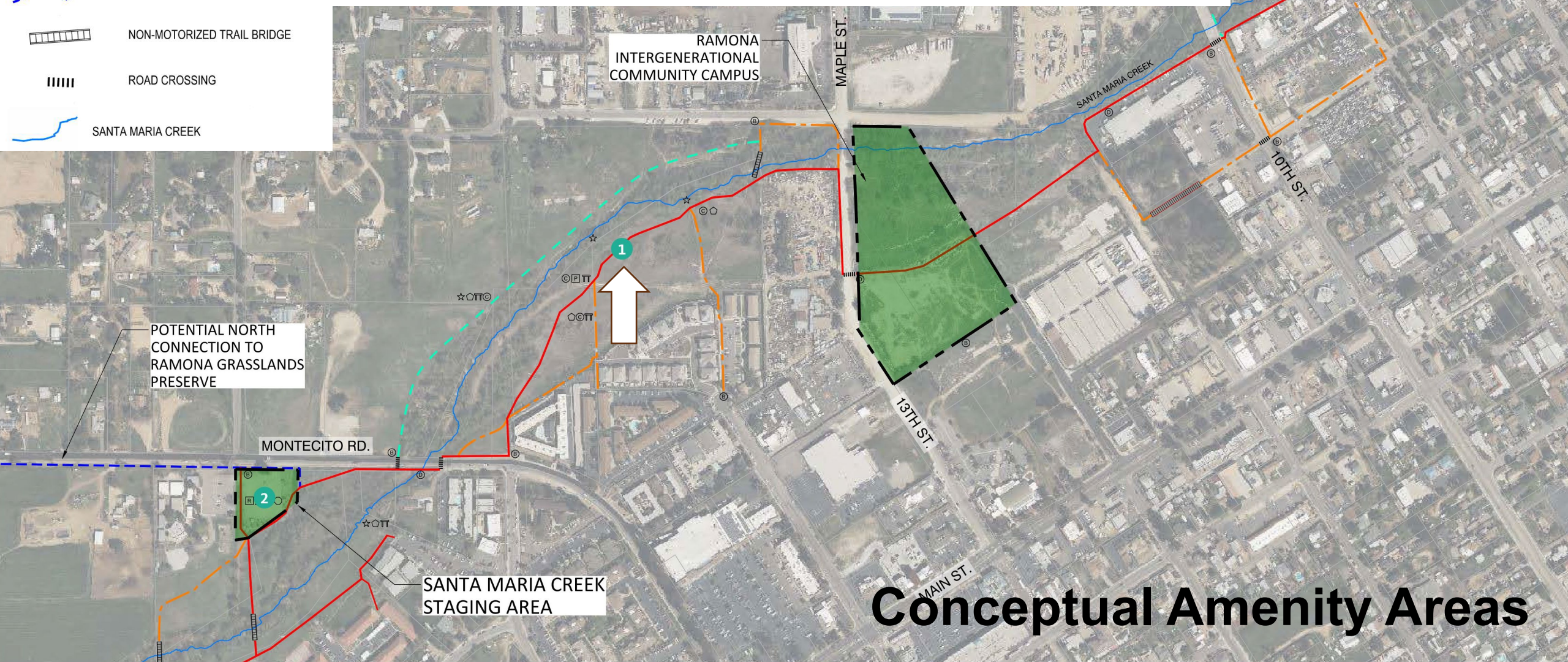
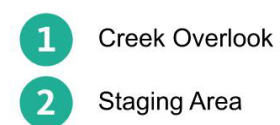
## PROPOSED TRAILS



## RECREATIONAL AMENITIES



## Enlargement Areas





# Conceptual Amenity Areas - Overlook



**SANTA MARIA CREEK GREENWAY PROJECT**





# Conceptual Amenity Areas - Overlook



## LEGEND

- 1 Picnic Area with Shade Structure
- 2 Wooden Deck Creek Overlook
- 3 Wayfinding Signage
- 4 Interpretive Educational Panels
- 5 Decomposed Granite Trail Surfacing (10 ft width typ.)
- 6 Hitching Post with Mounting Blocks
- 7 Boulders, typ.
- 8 Benches, typ.
- 9 Native Plantings, typ.
- 10 Native Trees, typ.
- 11 Existing Native Trees, typ.



# Conceptual Amenity Areas - Overlook



## LEGEND

- 1 Picnic Area with Shade Structure
- 2 Wooden Deck Creek Overlook
- 3 Wayfinding Signage
- 4 Interpretive Educational Panels
- 5 Decomposed Granite Trail Surfacing (10 ft width typ.)
- 6 Hitching Post with Mounting Blocks
- 7 Boulders, typ.
- 8 Benches, typ.
- 9 Native Plantings, typ.
- 10 Native Trees, typ.
- 11 Existing Native Trees, typ.





# Conceptual Amenity Areas - Overlook

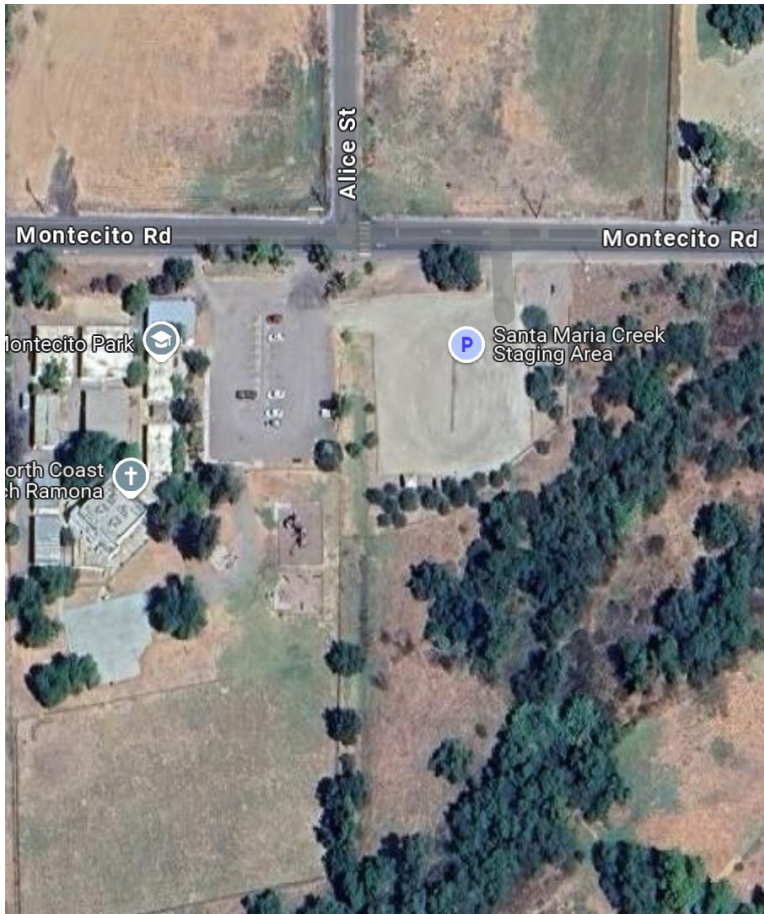


**SANTA MARIA CREEK GREENWAY PROJECT**





# Conceptual Amenity Areas – Staging Area





# Conceptual Amenity Areas – Staging Area



## LEGEND

- 1 Picnic Area with Shade Structure
- 2 Restroom Building
- 3 Existing Staging Area Sign
- 4 Native Gardens with Educational Signage
- 5 Decomposed Granite Trail Surfacing (10 ft width typ.)
- 6 Hitching Post with Mounting Blocks
- 7 Boulders, typ.
- 8 Native Trees, typ.
- 9 Existing Native Trees, typ.
- 10 Existing Picnic Shade Shelter and Sign
- 11 Existing Gravel Parking Lot



# Conceptual Amenity Areas – Staging Area



**SANTA MARIA CREEK GREENWAY PROJECT**





# Conceptual Trail Amenities



## LEGEND

- 1 Picnic Area with Shade Structure
- 2 Children's Nature Discovery Area
- 3 Trail Connection
- 4 Interpretive Educational Panels
- 5 Decomposed Granite Trail Surfacing (10 ft width typ.)
- 6 Hitching Post with Mounting Blocks
- 7 Boulders, typ.
- 8 Native Plantings, typ.
- 9 Native Trees, typ.
- 10 Existing Native Trees, typ.



# Conceptual Trail Amenities



## LEGEND

- 1 Picnic Area with Shade Structure
- 2 Children's Nature Discovery Area
- 3 Trail Connection
- 4 Interpretive Educational Panels
- 5 Decomposed Granite Trail Surfacing (10 ft width typ.)
- 6 Hitching Post with Mounting Blocks
- 7 Boulders, typ.
- 8 Native Plantings, typ.
- 9 Native Trees, typ.
- 10 Existing Native Trees, typ.





# Conceptual Trail Amenities



**SANTA MARIA CREEK GREENWAY PROJECT**





# Design Guidelines

**SANTA MARIA CREEK GREENWAY PROJECT**





# Design Guideline Principles

1. **Maximize public access** to the trail for community use.
2. Provide a **passive recreation** experience **that celebrates the natural character** of the creek and surrounding environment.
3. **Support and preserve the existing site conditions** with trail interventions which **minimize impacts** to existing features **and promote habitat** with native vegetation.
4. **Create opportunities for gathering** along the greenway.
5. **Increase awareness** of the creek's environmental and cultural history with **interpretive education** opportunities.
6. Utilize Crime Prevention Through Environmental Design (CPTED) guidelines to **create a safe experience for trail users and adjacent properties**.







*Reclaimed timber wooden hitching post*



*Prefabricated steel pedestrian bridge with non-slip concrete walkway at creek crossings.*



*Enhanced stamped concrete at crossings*

## Materiality



*Wooden mounting blocks at hitching post areas*



*Wooden or wood-stamped concrete post and rail fencing*



*Concrete waste receptacles*





*Wooden shade structure*



*Decomposed granite trails*



*Children's nature discovery areas*

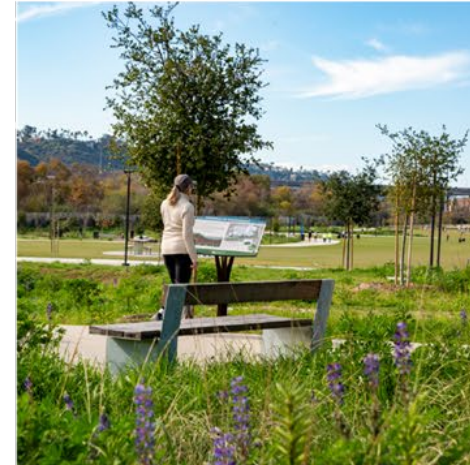
## Materiality



*Wooden picnic tables*



*Non-climbable metal fencing at private property easements*



*Bench nodes with interpretive signage*

# SANTA MARIA CREEK GREENWAY PROJECT





## Trees



*Platanus racemosa*



*Quercus agrifolia*



*Quercus engelmannii*

## Shrubs



*Abutilon palmeri*  
Palmer's Indian Mallow



*Adenostoma fasciculatum*  
Chamise



*Artemisia californica* 'Canyon Gray'  
Canyon Gray Sagebrush



*Baccharis pilularis* 'Pigeon Point'  
Dwarf Coyote Brush



*Baccharis sarothroides*  
Desert Broom



*Bahiopsis laciniata*  
San Diego County Viguiera



*Ceanothus tomentosus*  
Woollyleaf Ceanothus



*Eriophyllum confertiflorum*  
Golden Yarrow

# Native Plantings



*Sambucus nigra* spp. *caerulea*



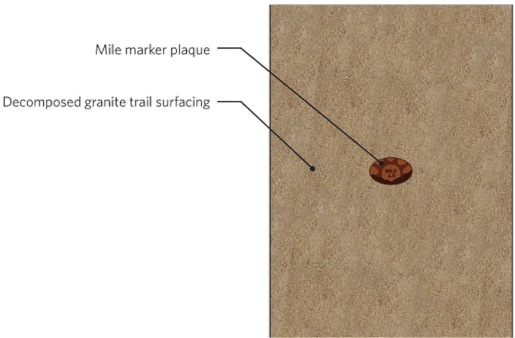
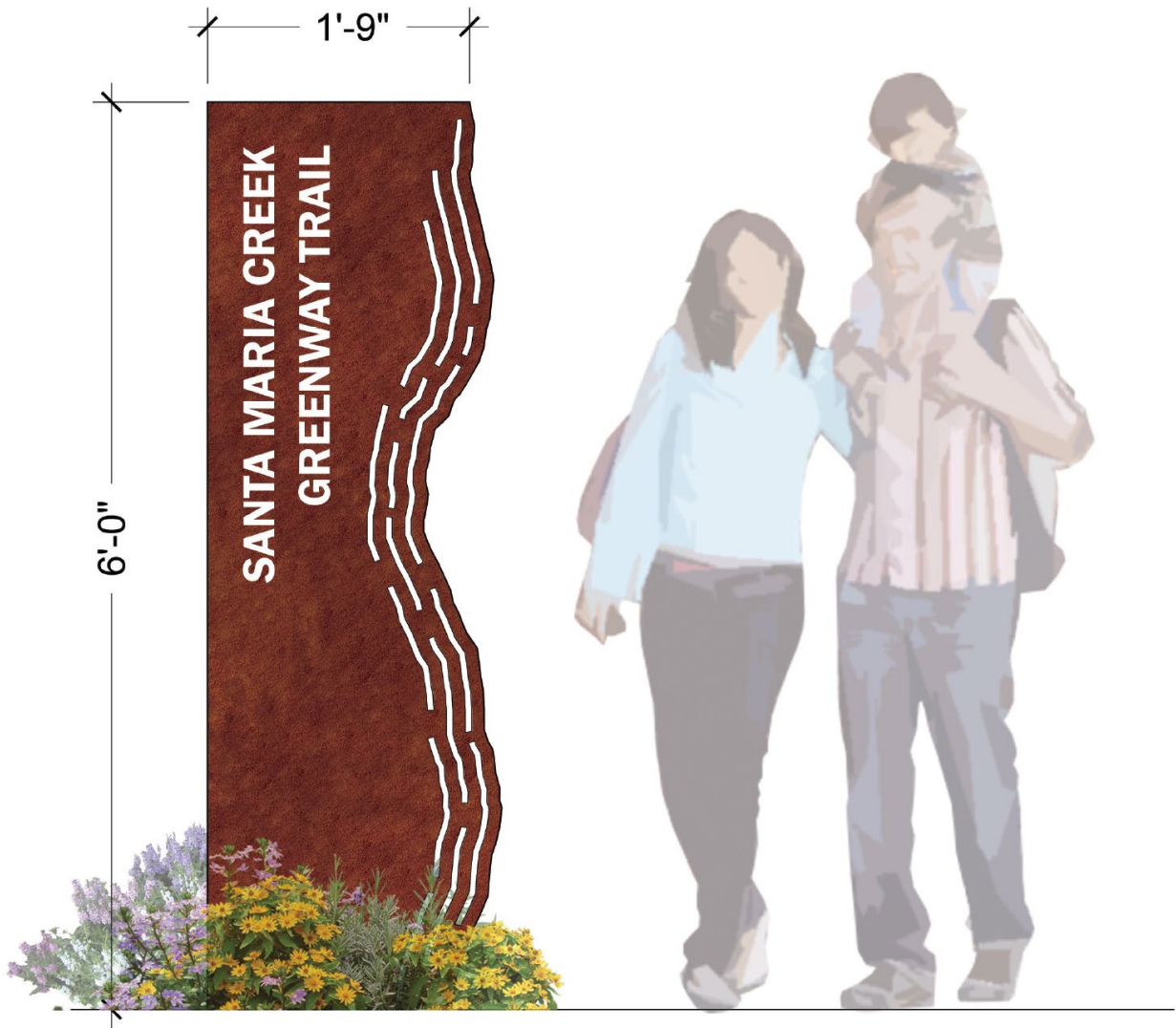
*Salvia mellifera*

# SANTA MARIA CREEK GREENWAY PROJECT





# Wayfinding

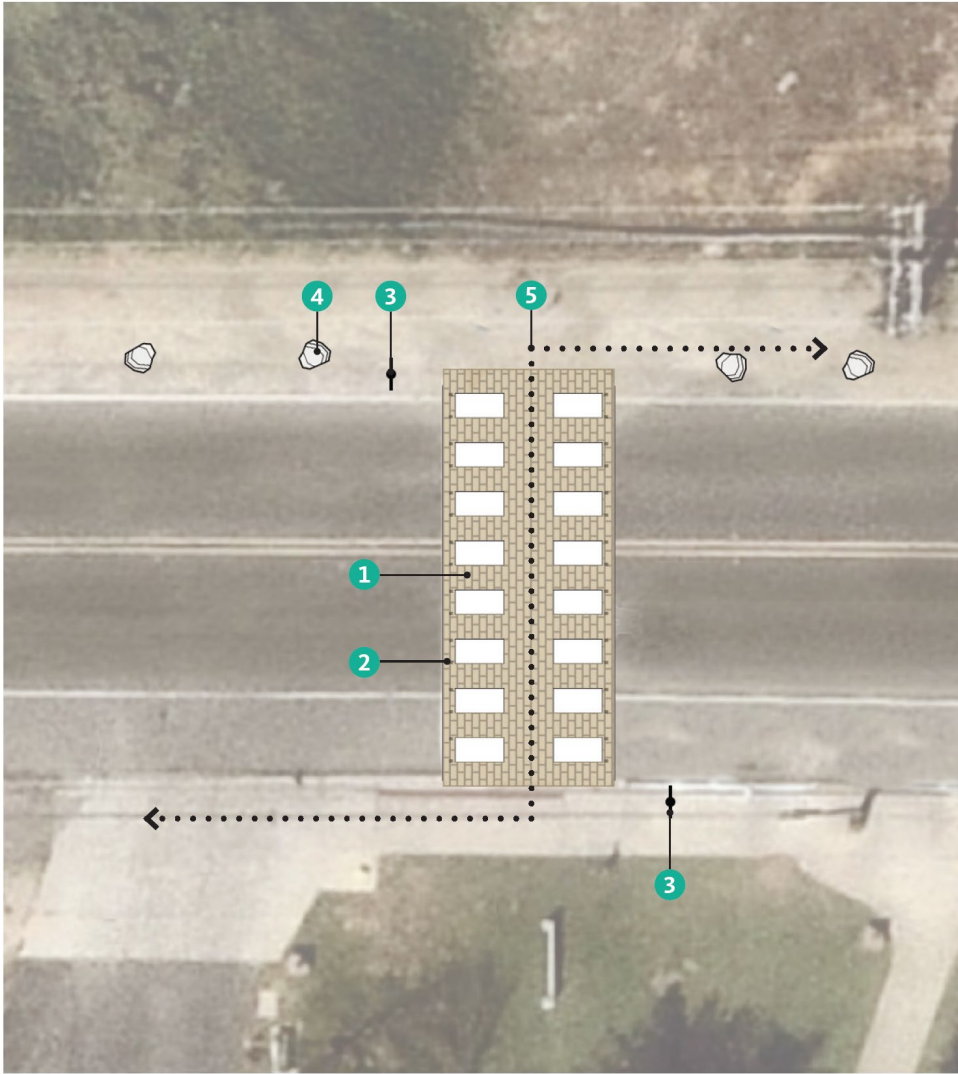




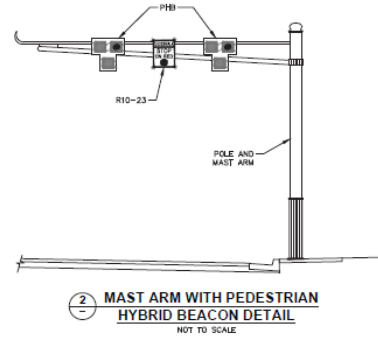
# Bridges







0 5 10  
Scale: 1" = 10'-0"  
N



## LEGEND

- 1 Crosswalk with Enhanced Concrete Paving
- 2 Type G Reflectors
- 3 Rectangular Rapid Flashing Beacon Trail Sign
- 4 Boulder Bollards
- 5 Proposed Path of Travel



0 2 4  
Scale: 1" = 4'-0"

# Road Crossings

# SANTA MARIA CREEK GREENWAY PROJECT





# Cost Estimates and Takeaways

**SANTA MARIA CREEK GREENWAY PROJECT**





# Projected Costs – Design and Construction

Estimated acquisition, design, environmental, permitting, and construction costs (preliminary)

Phase	Description	Estimated Cost
1	Ramona Community Park to Santa Maria Ck Staging Area to Robertson (Primary/Alternate 1/Alternate 2 alignment)	\$5,393,000 - \$7,922,000
2	Montecito Rd Bypass and Connector Trails	\$3,199,000
3	Montecito Rd Bypass to Ramona Grasslands Preserve	\$2,237,000
4	Future Gap Closure	\$5,054,000



# Projected Costs – Long-Term Maintenance

Estimated annual labor and annual as-needed material costs (preliminary)

Item	Labor						Materials*			
	Crew Size (Number of staff)	Hours per Day	Days per Visit	Number of Visits per Year	Total Hours per Year	Labor Subtotal	Item	Quantity	Unit	Unit Cost
Trail Surface Maintenance	4	8	5	1	160	\$ 12,000	Soil	500	Cubic Yard	\$ 10
Bridge Maintenance	4	8	1	1	32	\$ 2,400	Supplies	1	Lump Sum	\$ 2,500
Road Crossings: striping	3	8	3	1	72	\$ 5,400	Supplies	1	Lump Sum	\$ 1,200
Pet Waste stations – supplies and cleanup	1	2	1	52	104	\$ 7,800	Supplies	52	Per Event	\$ 200
Equestrian facilities – supplies and cleanup	1	2	1	52	104	\$ 7,800	Supplies	52	Per Event	\$ 200
Restroom housekeeping	1	4	1	52	208	\$ 15,600	Supplies	52	Per Event	\$ 100
Amenity Maintenance (Drinking fountain, etc)	1	2	1	52	104	\$ 7,800	Supplies	52	Per Event	\$ 50
Landscape Maintenance around staging areas	2	8	2	4	128	\$ 9,600	Supplies	1	Lump Sum	\$ 15,000

\*assumed not all materials would be needed annually

- **\$68,400** in estimated annual labor costs
- Volunteer support for maintenance could reduce these costs







# Funding

- \$1,000,000 allocated to date
- Funding needs to be identified and secured for build out, operations and maintenance.
- Potential sources:
  - County Capital Improvement Needs Assessment (Capital Plan)
  - Parks Land Dedication Ordinance (acquisition, amenity node areas)
  - State, Federal or Local Grants
    - Outdoor access, recreation, climate resilience, alternative transportation

## 2025 - 2030 Capital Improvement Needs Assessment

Funding Plan									
Department	Title	Scope	Estimated Project Cost	Capital Amount Funded	FY25-26	FY26-27	FY27-28	FY28-29	FY29-30
PARKS	Santa Maria Creek Greenway	Acquisition, design, environmental analysis and construction of approximately 2.5 mile multi-use community pathway along the Santa Maria Creek from Wellfield Park to Ramona Grasslands. Connects to the RICC.	\$ 8,800,000	\$ 1,000,000			\$3,500,000		\$4,300,000

 Pre-Construction  Construction

## SANTA MARIA CREEK GREENWAY PROJECT





# Implementation Plan Quick Take Aways

- Flexibility is Required
- Floodplain is a Major Constraint
- Engineered Sections Increase Costs
- Maintenance will be a Significant Investment
- Trail Connectivity Promotes Community
- Partnerships are Essential
- Focus on Core Areas and Creating Wins





# Next Steps

- Coordinate with community partners including Ramona Municipal Water District for Greenway trail segment and amenity planning
- Continue outreach with landowners and agencies in 'Downtown' phase of the project area
- Explore grant and other funding opportunities
- Continue to support ongoing planning efforts for the trail segments that are part of the 13<sup>th</sup> St Bridge Project and Paseo Norte development at the RICC





# Ways to Get Involved

- Volunteer as part of the Santa Maria Creek Greenway Committee (meetings held 2<sup>nd</sup> Wednesdays).
- Sign up for County of San Diego Capital Plan (CINA) updates and express your support for Greenway funding. Comment period is open through March 2026.
  - <https://engage.sandiegocounty.gov/capital-plan-2026-2031>
- Connect with DPR through Instagram, Facebook and X for updates or sign up for the [monthly newsletter](#) to track updates
- Visit the [Parks Development Plan website](#) for project-specific updates and information





# Questions?

Raise your hand and we'll pass around the microphone so everyone can hear your question.

Please remember the golden rule and treat others as you would want to be treated.

**For more information, contact:**

Shannon Quigley-Raymond

Land Use/Environmental Planner

[trails@sdcounty.ca.gov](mailto:trails@sdcounty.ca.gov)

619-694-6801

**For progress updates and more, visit:**



**SANTA MARIA CREEK GREENWAY PROJECT**

