



WORKSHOP SUMMARY – ALPINE, CA

Date: September 23th, 2020 Project File No.: US2020-07

Attention: Alpine, CA Project Name: Alpine Community Park

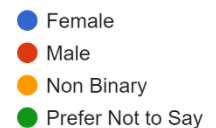
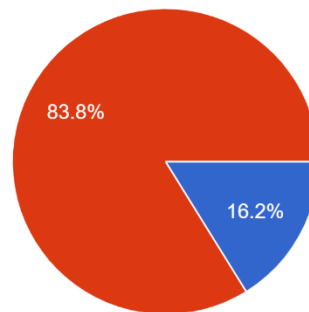
The following is a summary of the feedback gathered from the online survey and the design workshop webinar on Wednesday, September 23rd. The workshop was held virtually using Zoom Webinar and Facebook Live to gain input regarding potential skatepark terrain and comments on the sample designs provided. Immediately after, a second workshop was held virtually to gain input regarding potential bike park terrain and concepts on the sample designs provided. Please review and contact NLS with any questions or comments.

Part One: Demographics

Participation: A total of 242 community members completed the online survey.

Question 1: Gender

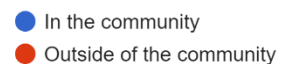
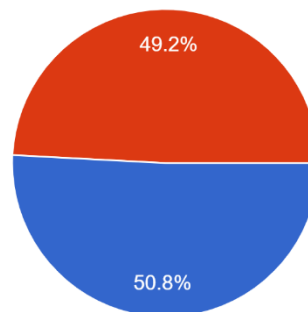
- 83.8% Male
- 16.2% Female



of the 306 community members who completed the online survey, 84% were male, and 16% were female.

Question 2: I Live...

- 50.8% In Community
- 49.2% Outside



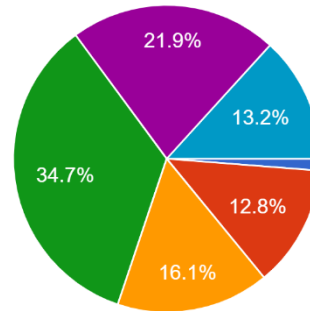
51% of the participants live in the community and 49% live outside the community. This represents a strong interest in action sports within the local community and surrounding.



WORKSHOP SUMMARY – ALPINE, CA

Question 3: How Old are you?

- 1.2% 0-10
- 12.8% 11-20
- 16.1% 21-30
- 34.7% 31-40
- 21.9% 41-50
- 13.2% 50+



- 0-10
- 11-20
- 21-30
- 31-40
- 41 - 50
- 50+

A broad range of age groups are represented. The vast majority between 31-40.

Part Two: Participation

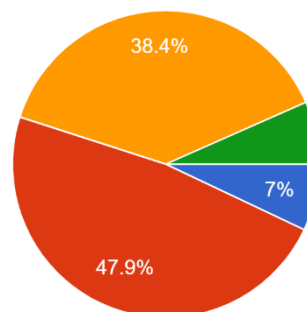
Question 4: I am interested in the project because I am...

- 38 (15.7%) A Skateboarder
- 54 (22.3%) A BMX Rider
- 10 (4.1%) A Scooter Rider
- 60 (24.8%) A Parent/Guardian/Spectator
- 59 (24.4%) A Local Resident Interested
- 11 (4.5%) A Rollerblader / Roller Skater
- 191 (78.9%) A Mountain Biker

A broad range user groups are represented. The majority participants are Mountain Bikers, Skateboarders and BMX riders though there is strong representation from parents/guardians of users, and nearby residents.

Question 5: How would you describe your skateboarding /riding ability?

- 7% Beginner
- 47.9% Intermediate
- 38.4% Advanced
- 6.6% Do not Skate



- Beginner
- Intermediate
- Advanced
- Don't Ride

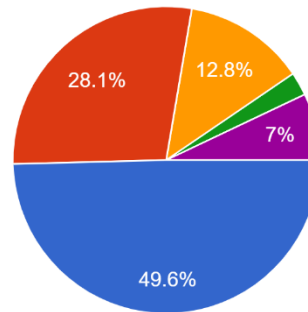
Our goal is to create a well-rounded design that appeals to a broad range of abilities and will provide appropriate challenges.



WORKSHOP SUMMARY – ALPINE, CA

Question 6: How often do you skate/ride?

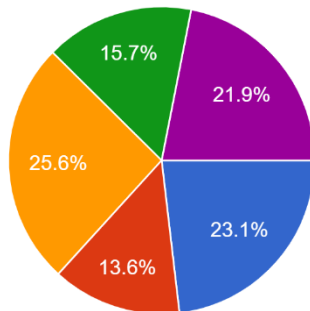
- 56.2% 3+ days/week
- 26.5% 1-2 times/week
- 7.2% 1-2 times/month
- 5.6% Once / month
- 4.6% Never



- 3+ days per week
- Once or twice a week
- A couple times a month
- Once a month or less
- Never

Many participants skate multiple times per week. We expect the all wheel park to be used frequently.

Question 7: Do you plan to use the All-Wheel Skatepark? If so, how often?



- Yes, I plan to use the All-Wheel SkatePark multiple times per week
- Yes, I plan to use the All-Wheel Skatepark once per week
- Yes, I plan to use the All-Wheel Skatepark a 1-3 times per month
- I am not sure, but i would like to give design input
- No, i do not plan to use the All-Wheel Skatepark, and am not interested in gi...

- 23.1% Yes, multiple times per week
- 13.6% Yes, once per week
- 25.6% Yes, 1-3 times per month
- 15.7% Unsure, will give design input
- 21.9% No, not giving design input

Most participants expect to use the park multiple times a month or more frequently.



WORKSHOP SUMMARY – ALPINE, CA

Part Three: Preferred Terrain: *Three design options were presented:*

Option 1:



What do you like about Option #1

- Snake run.
- Connection and flow.
- Looks like it would feel part of the surroundings.
- Spread out with long lines, possible to loop all around.
- No dead ends.
- Something for everyone.

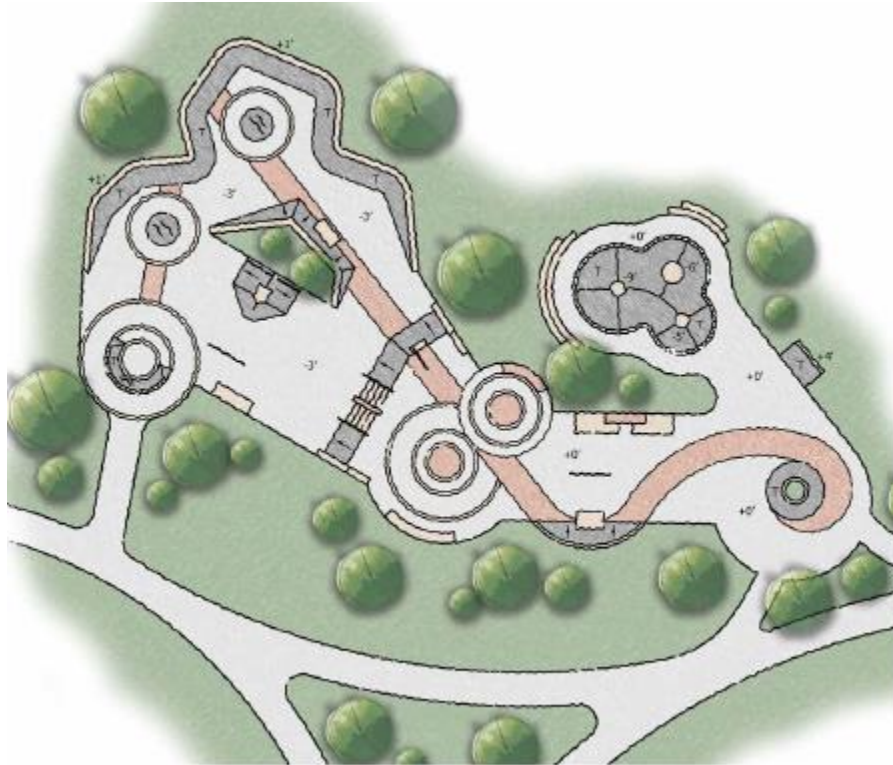
What do you dislike about Option #1

- Lacking areas to hang out, open space to session features.
- Needs longer ledges and rails.
- Spread out, could have more features.
- Could have more flow in street area.



WORKSHOP SUMMARY – ALPINE, CA

Option 2:



What do you like about Option #2

- Bowl is isolated with seating.
- More transition elements in street area, more flat ground too.
- Unique layout and features, limits cross traffic.
- More space, less cross traffic.
- Long run up to stairs and down features.
-

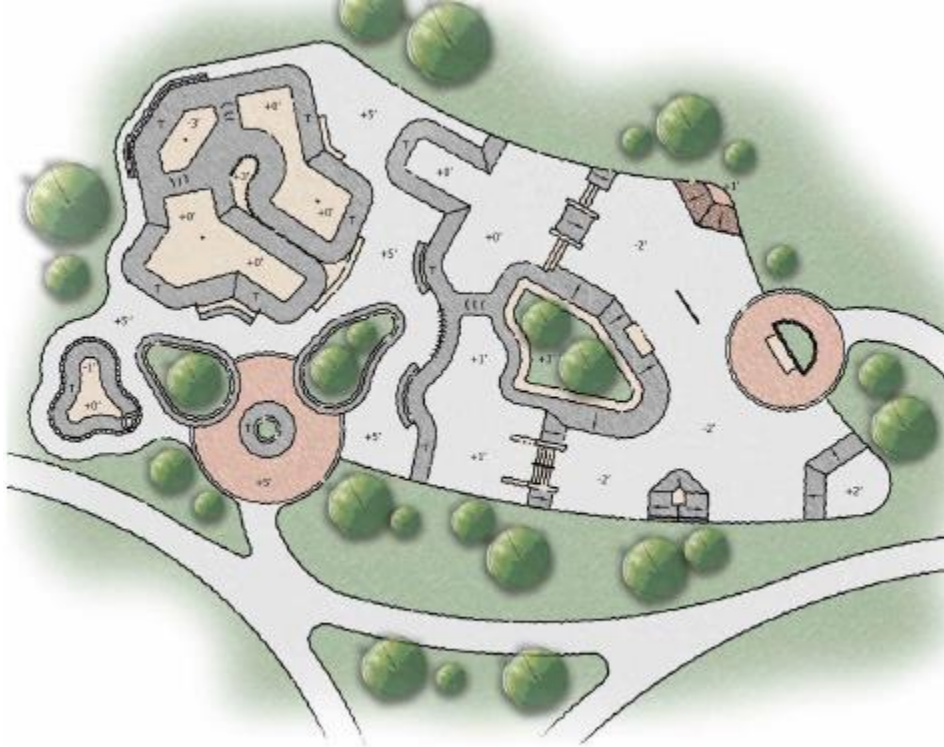
What do you dislike about Option #2

- Seems designed for skateboards as priority, less all wheel.
- Transition and pool on opposite ends of park.
- Lack of features in bottom right.



WORKSHOP SUMMARY – ALPINE, CA

Option 3:



What do you like about Option #3

- Bowl shape is large and exciting.
- Big open and lots of variety.
- Many unique features.
- Very defined flow of park.
- Many different spaces for maximized capacity.

What do you dislike about Option #3

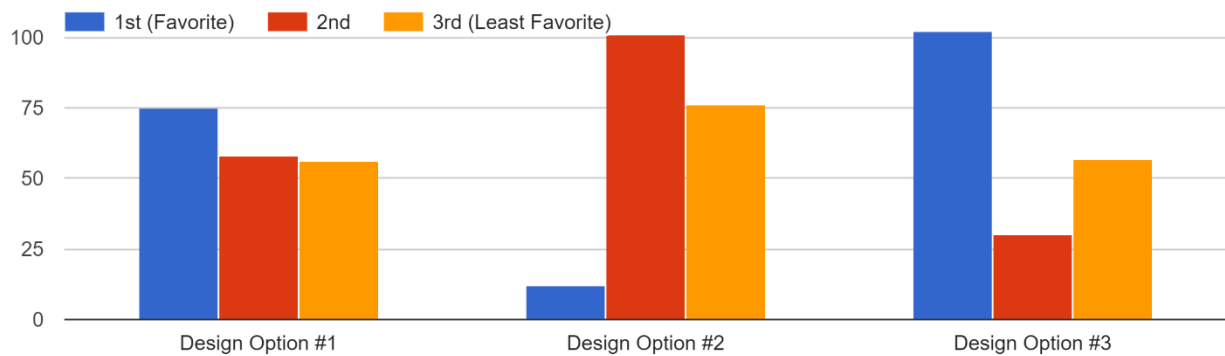
- More shade.
- More ledges and rails.
- Right side is more empty.



WORKSHOP SUMMARY – ALPINE, CA

Question 8: Rank your preferred design direction:

Please rank your preferred Design Options (1-Favorite through 3-Least Favorite)



Survey Participants showed support for each of the concept options, however, concept 3 was the most preferred design direction. The final design will be representative of option 3, then incorporate some favorable aspects of options 1 and 2.

The main takeaways from the survey data and webinar discussion of the three design options are:

- Large bowl area is exciting and is preferred together in an area.
- Defined directions of flow is encouraged, but should not be mandatory.
- Participants were receptive to diversity of obstacles and progression of elements.



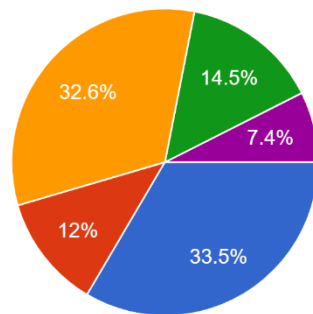
WORKSHOP SUMMARY – ALPINE, CA

Bike Park Design Input:

Question 9: Do you plan to use the All-Wheel Skatepark? If so, how often?

Do you plan to use the Bike Park? If so, how often?

242 responses



- Yes, I plan to use the Bike Park multiple times per week
- Yes, I plan to use the Bike Park once per week
- Yes, I plan to use the Bike Park a 1-3 times per month
- I am not sure, but i would like to give design input
- No, i do not plan to use the Bike Park, and am not interested in giving design...

- 33.5% Yes, multiple times per week
- 12% Yes, once per week
- 32.6% Yes, 1-3 times per month
- 14.5% Unsure, will give design input
- 7.4% No, not giving design input

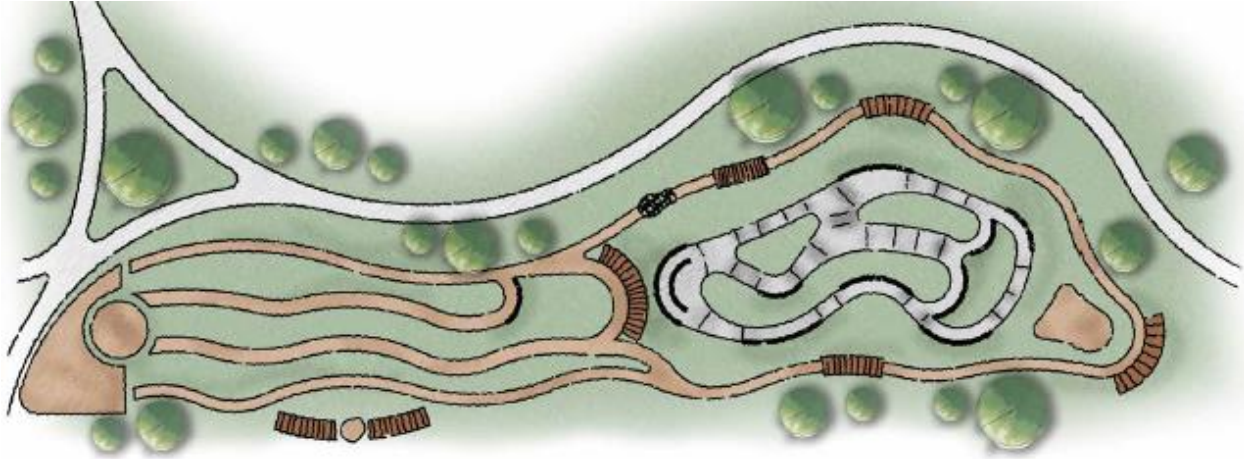
Most participants expect to use the park multiple times a month or more frequently.



WORKSHOP SUMMARY – ALPINE, CA

Preferred Terrain: *Two design options were presented:*

Option 1:



What do you like about Option #1

- Longer runs with different options.
- Built in skill features.
- Lots of room for pumps and jumps.
- Circular loops.

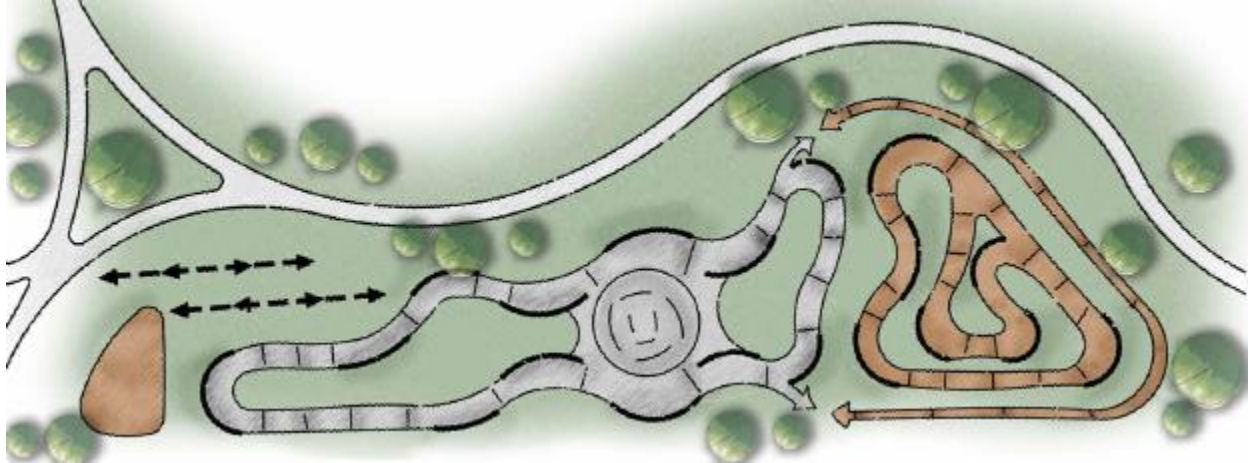
What do you dislike about Option #1

- Needs devoted skills area.
- Pump track in center, requires crossing trail to reach.
- Could have more jump lines.
- No symmetry trails for racing.



WORKSHOP SUMMARY – ALPINE, CA

Option 2:



What do you like about Option #2

- Well developed pump tracks.
- More tight corners.
- Better for developing skills.

What do you dislike about Option #2

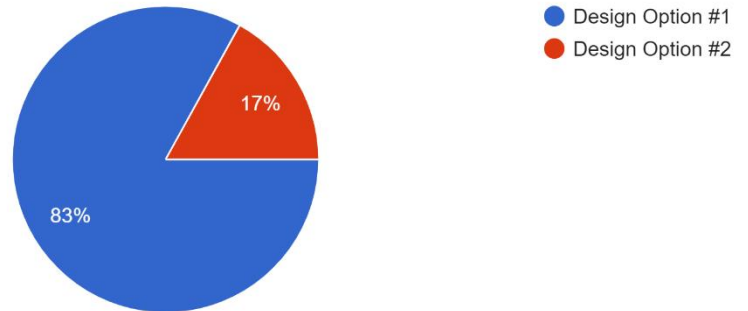
- More concrete than dirt.
- No shade.
- No jump lines.
- No natural or skill features.



WORKSHOP SUMMARY – ALPINE, CA

Question 10: Rank your preferred design direction:

Survey Participants showed support for concept 1 as the most preferred design direction. The final design will be representative of option 1, with some revisions incorporating positives from concept 2.



The main takeaways from the survey data and webinar discussion of the two design options are:

- Survey participants are looking for more dirt than concrete, with separate skills area and jump lines.
- Some participants referenced Valmont Bike Park in Boulder, CO and Sweetwater Bike Park in Bonita, CA as further references.
- The ability to progress in skills to prepare for MTB trails was also expressed.

The preceding report is a summary of public commentary as interpreted by New Line Skateparks. For further data, demographic information, comments or clarification please contact NLS.



WORKSHOP SUMMARY – ALPINE, CA

Current Status: Concept Revisions:

New Line Skateparks is currently revising and fine tuning the concepts presented during the workshop to accommodate the feedback and preferences received. Skatepark design option 3 is the current base of design, which is being adjusted to further consider terrain options, size, and locations.

Priority adjustment areas:



All-Wheel Skatepark Design Option #3



WORKSHOP SUMMARY – ALPINE, CA

Current iteration:

OPTION 3 REVISION



Bike park:

Option 1 of the bike park is being refined to accommodate the feedback. Clarifying programming and overall footprint is the current priority.

