

Tijuana River Valley Regional Park

Public Use and Economic Feasibility Study Recommendations

Open House Presentation

2721 Monument Road, San Diego, CA 92154

December 14, 2016 from 6-8pm





Open House #2

TRVRP Public Use and Economic Feasibility Study

Wednesday, December 14th from 6:00 – 8:00 p.m.

Thank you for your interest in this study and the future of this park.

The purpose of this study was to assess the feasibility of potentially adding campgrounds, additional recreational opportunities, and exploring regional trail connections.

The study considered existing planning documents for TRVRP and the region, identified recreational gaps in TRVRP, considered public input and stakeholder feedback, as well as considered the economic feasibility of each concept on display today.

If you have any comments regarding the study, concept plans in this presentation, or other items related to TRVRP please email Melanie Tylke at melanie.tylke@sdcounty.ca.gov by December 30, 2016.



DPR Mission Statement

Enhance the quality of life in San Diego County by providing an exceptional parks and recreation experience, while preserving our County's significant natural resources."



TRVRP Public Use and Economic Feasibility Study

- Purpose is to assess the feasibility of:
 - camping locations
 - additional recreational opportunities
 - regional trail connections
- The study...
 - considered existing planning documents
 - identified recreational gaps
 - considered public input
 - considered economic feasibility



TRVRP Public Use and Economic Feasibility Study

- Goals for TRVRP include:
 - Balance active and passive recreation
 - Preserve and protect natural resources
 - Create a regional destination
 - Collaborate with multiple agencies w/in the Tijuana River Valley
- Utilized DPR Strategic Plan 2016-2021 Goals

DPR Mission Statement

“Enhance the quality of life in San Diego County by providing an exceptional parks and recreation experience, while preserving our County’s significant natural resources.”



Study Area Overview

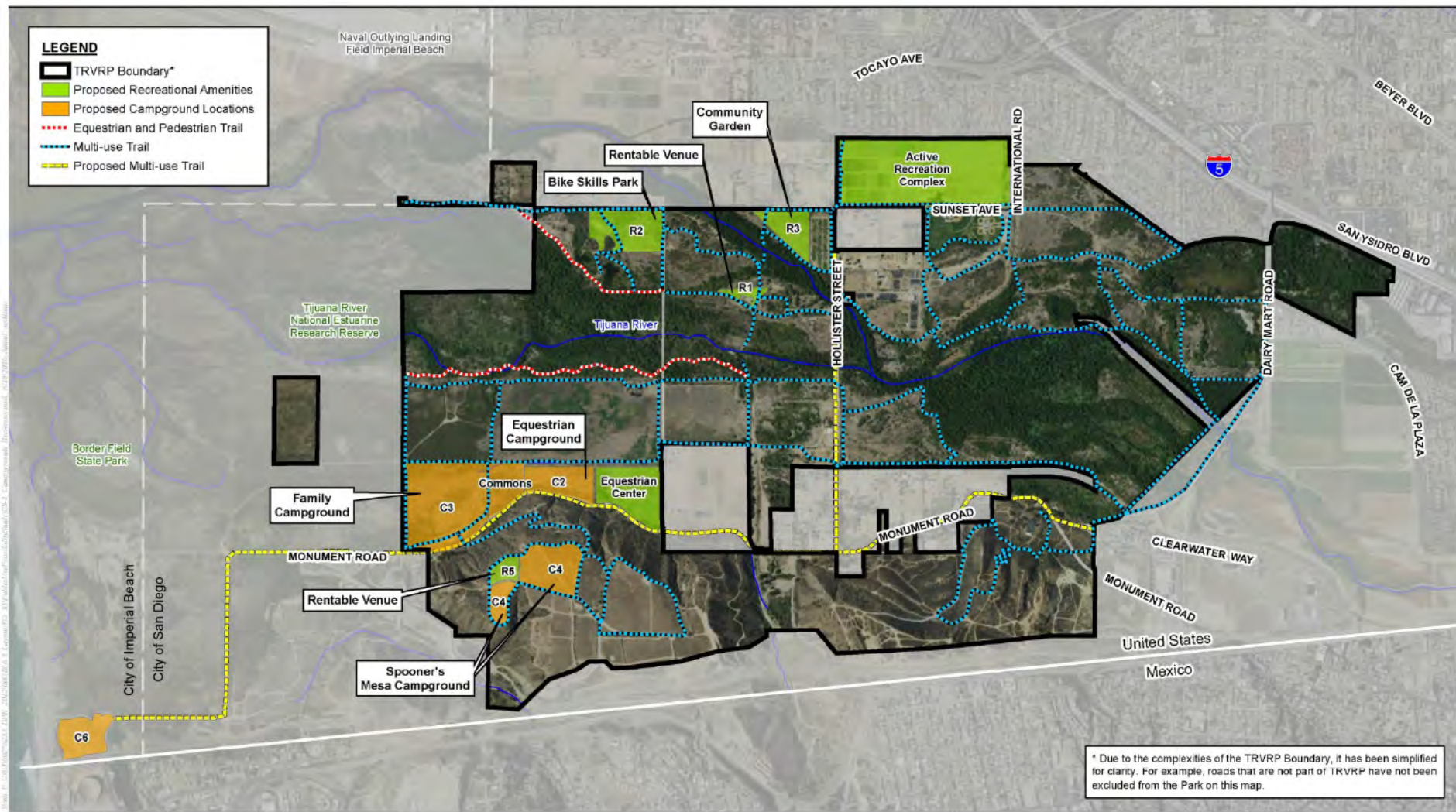


Figure ES-1
Proposed Campgrounds and Recreational Amenities

Campground Overview

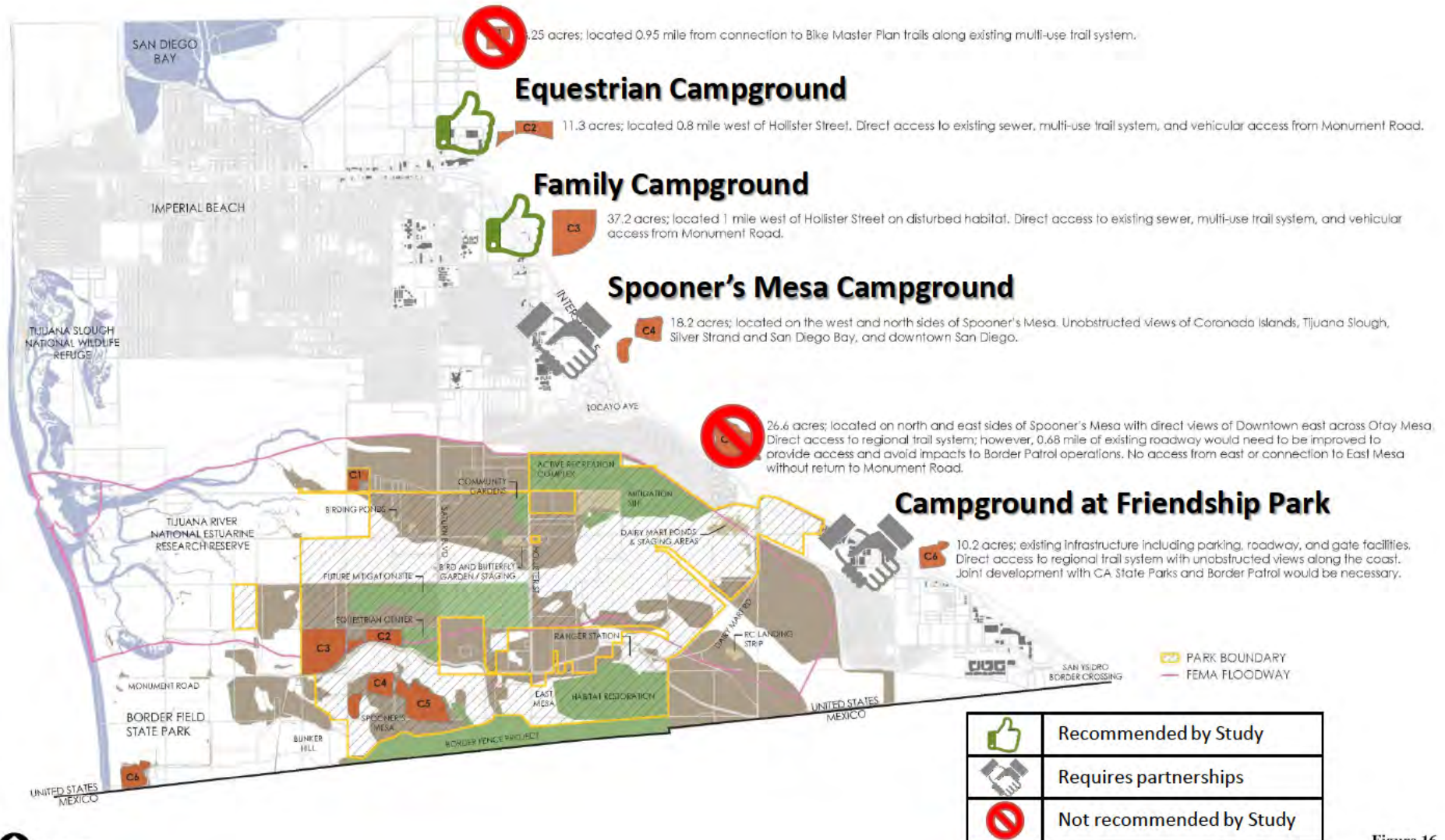


Figure 16
Potential Campground Locations

Equestrian & Family Campground with Commons (C2 & C3)



Figure 22
Equestrian and Family Campground with Commons (C2 and C3)

Figure shown is conceptual in nature and subject to change



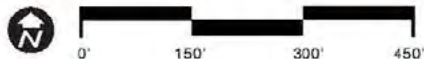
Spooner's Mesa Campground & Rentable Venue (C4 & R5)



Figure 23

Spooner's Mesa Campground and Rentable Venue (C4 and R5)

Figure shown is conceptual in nature and subject to change





Campground at Friendship Park (C6)



Figure 24

Campground at Friendship Park (C6)

Figure shown is conceptual in nature and subject to change

Recreational Activities Overview

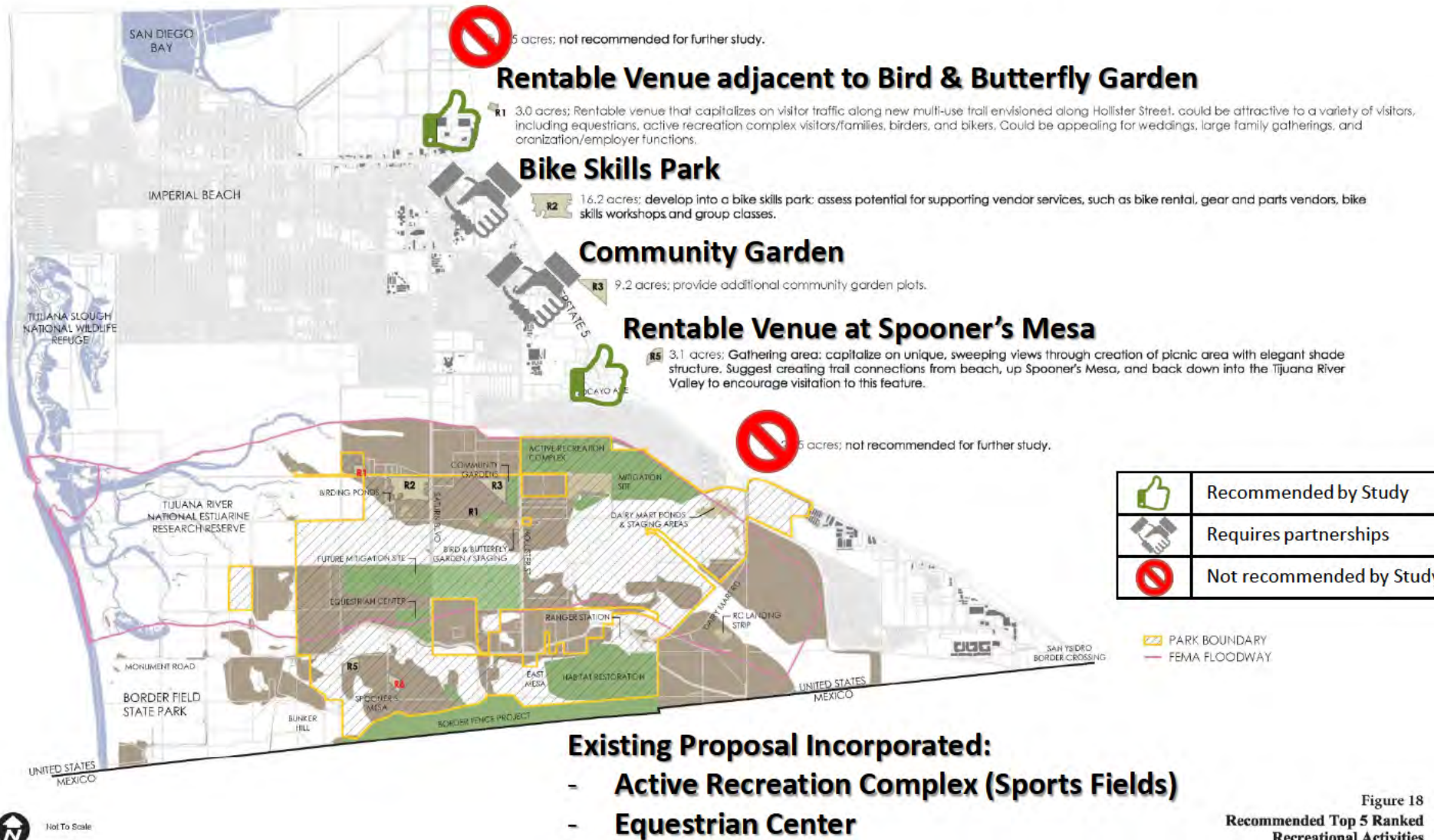


Figure 18
Recommended Top 5 Ranked
Recreational Activities



Not To Scale



Spooner's Mesa Campground & Rentable Venue (C4 & R5)



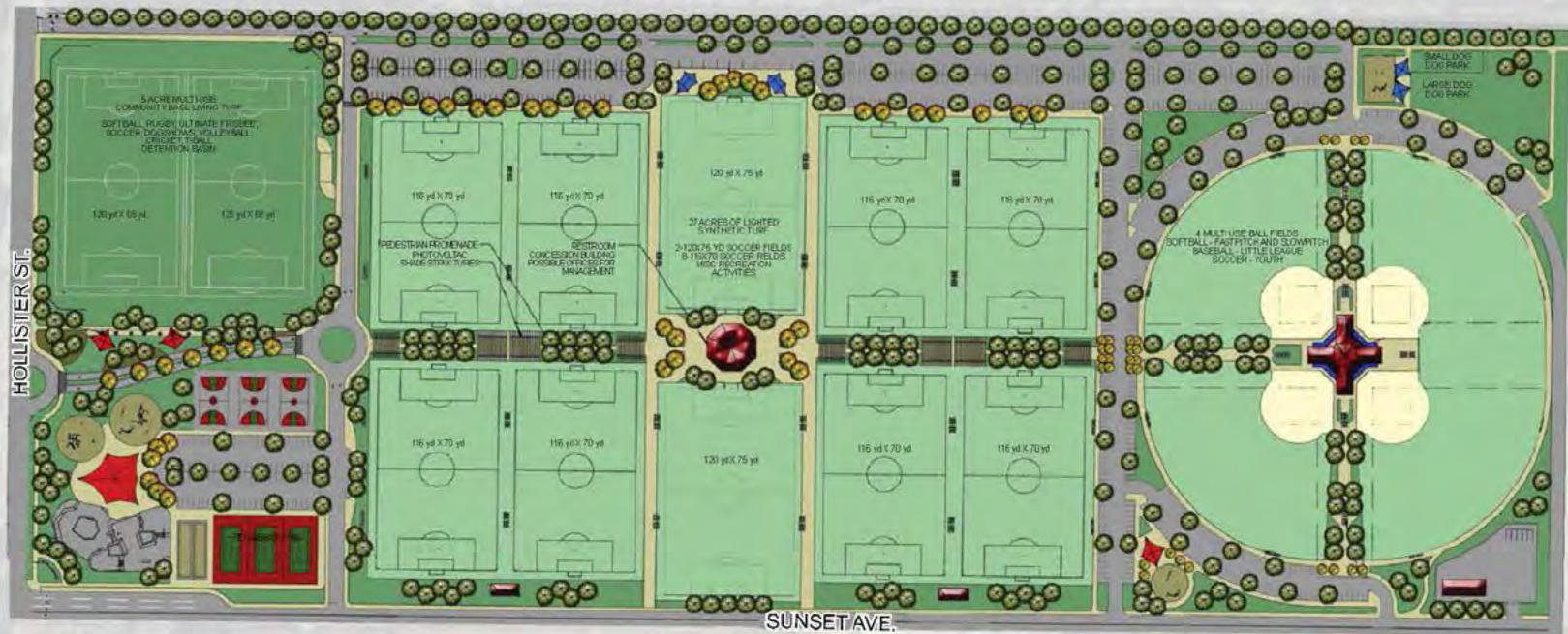
Figure 23

Spooner's Mesa Campground and Rentable Venue (C4 and R5)

Figure shown is conceptual in nature and subject to change



Active Recreation Complex (Sports Fields)



Source: Adapted from the Draft Concept Plan for the Active Recreation Complex from the County of San Diego, Department of Parks and Recreation



0' 300' 600'

Figure 20
Proposed Active Recreation Complex

Rentable Venue Adjacent to Bird & Butterfly Garden (R1)





Bike Skills Park (R2)





Source: Adapted from the Conceptual Site Plan (Evaluation of a Potential Equestrian Facility Within the Tijuana River Valley) from the County of San Diego, Department of Parks and Recreation.

Figure 21
Proposed Equestrian Center

Equestrian Center

Figure shown is conceptual in nature and subject to change

Trail, Bike Route & Network Gaps

Potential connections by direction

North: Bike path connections to the Bayshore Bikeway, Otay Valley Regional Park, and Downtown San Diego

East: Bike path connections to the International Border

West: California Coastal Trail, and USFWS, TRNEER trails

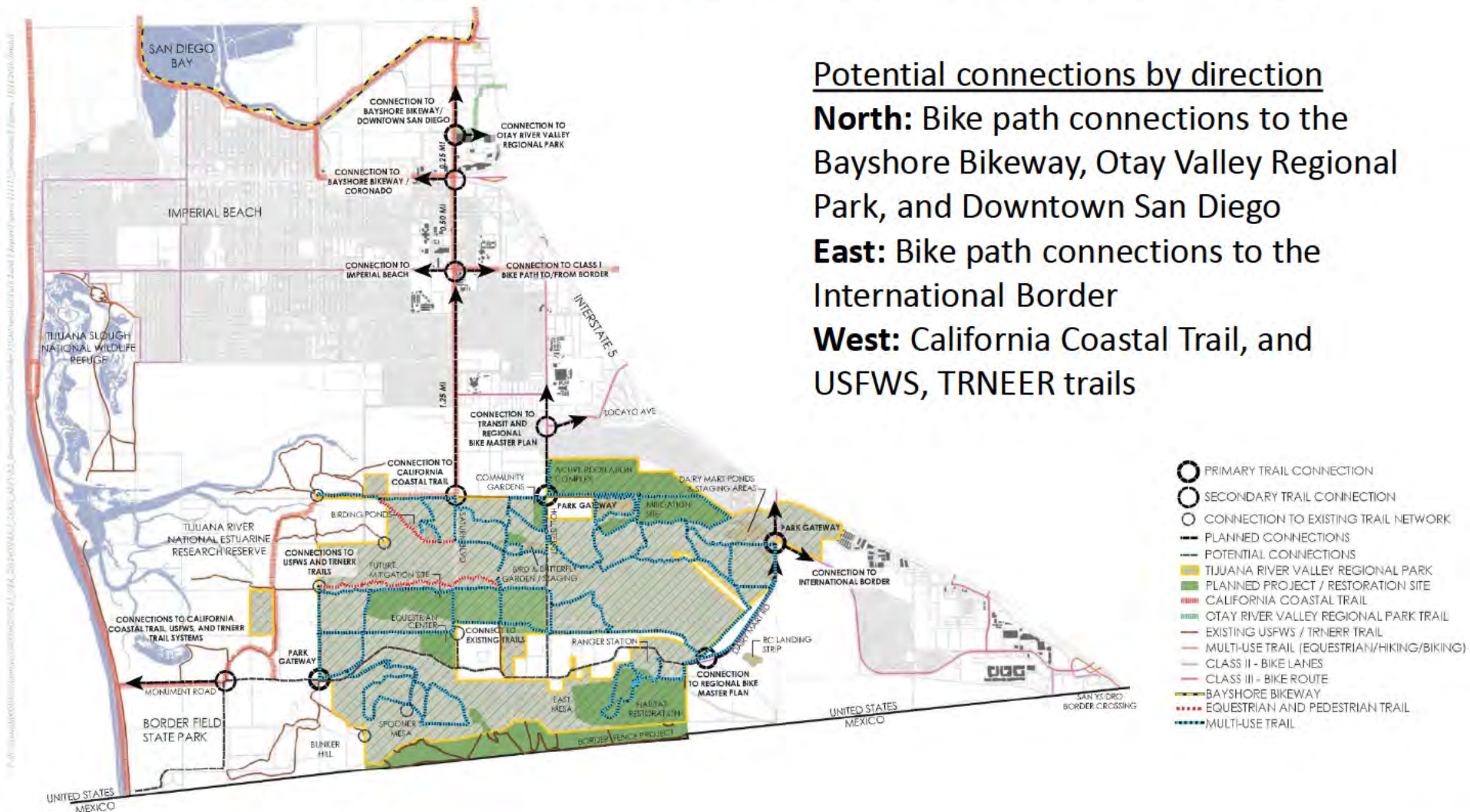


Figure 14

Tijuana Valley Regional Trails, Bike Routes, and Network Gaps

Figure shown is conceptual in nature and subject to change

Typical Trail - Hollister St. & Monument Rd.

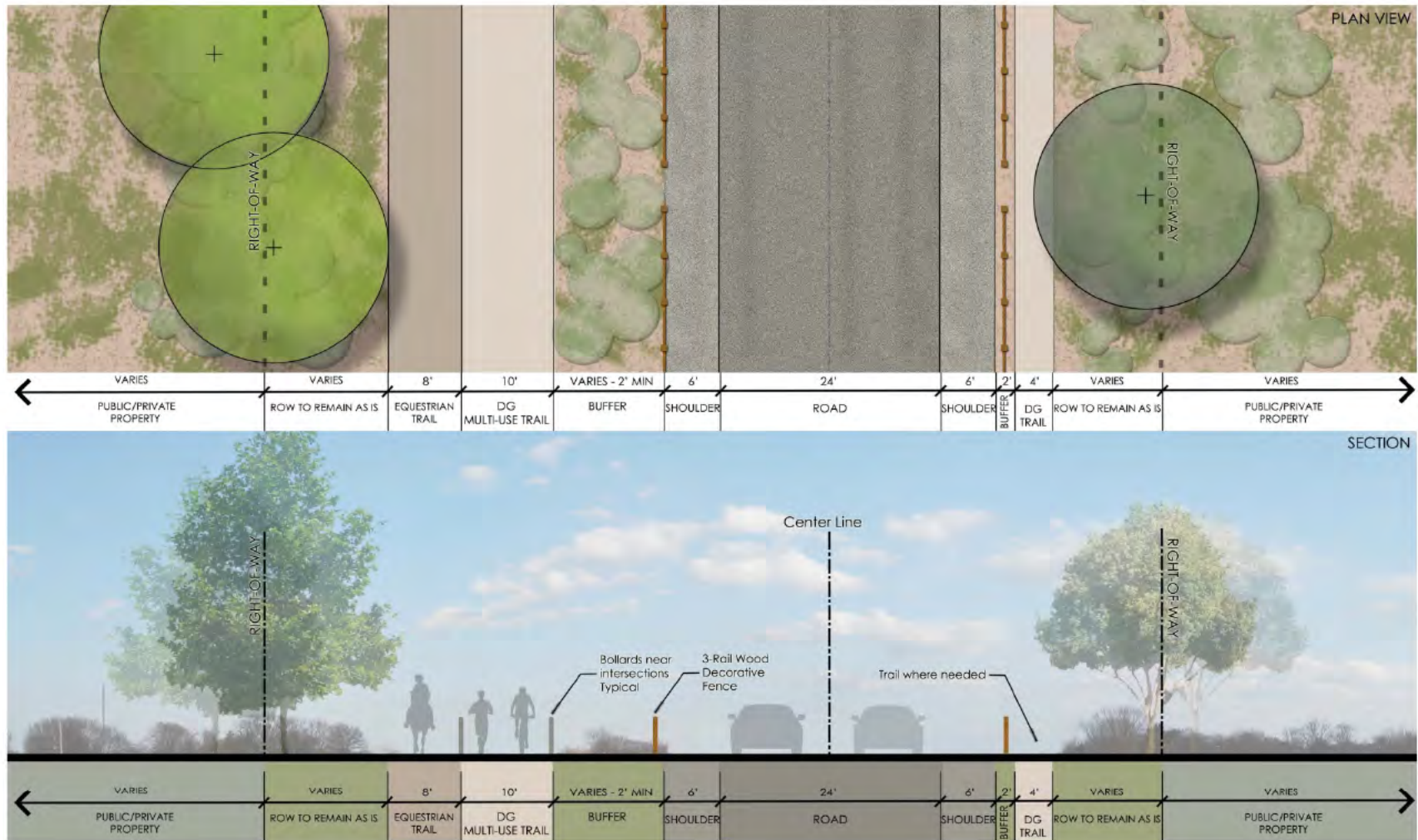


Figure 28

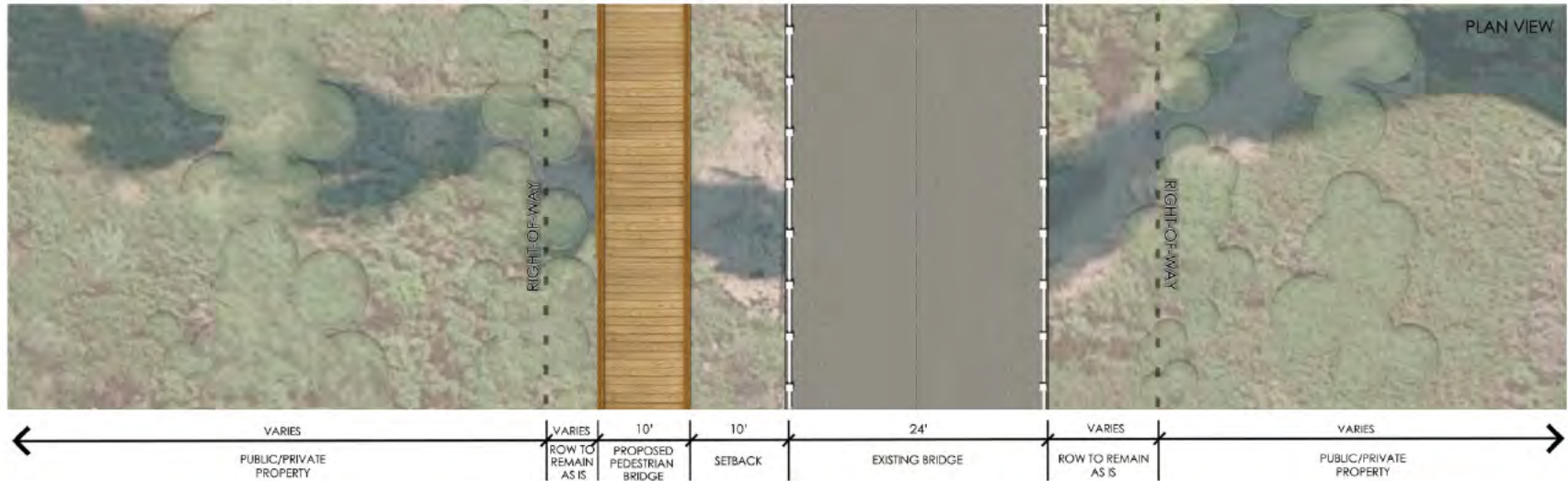
Typical Trail along Hollister Street and Monument Road

Figure shown is conceptual in nature and subject to change



Not to Scale

Hollister St. Bridge Proposals



Example image
Historical Bridge 1



Example image
Historical Bridge 2



Example image
Historical Bridge 3



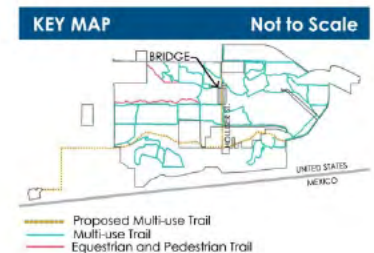
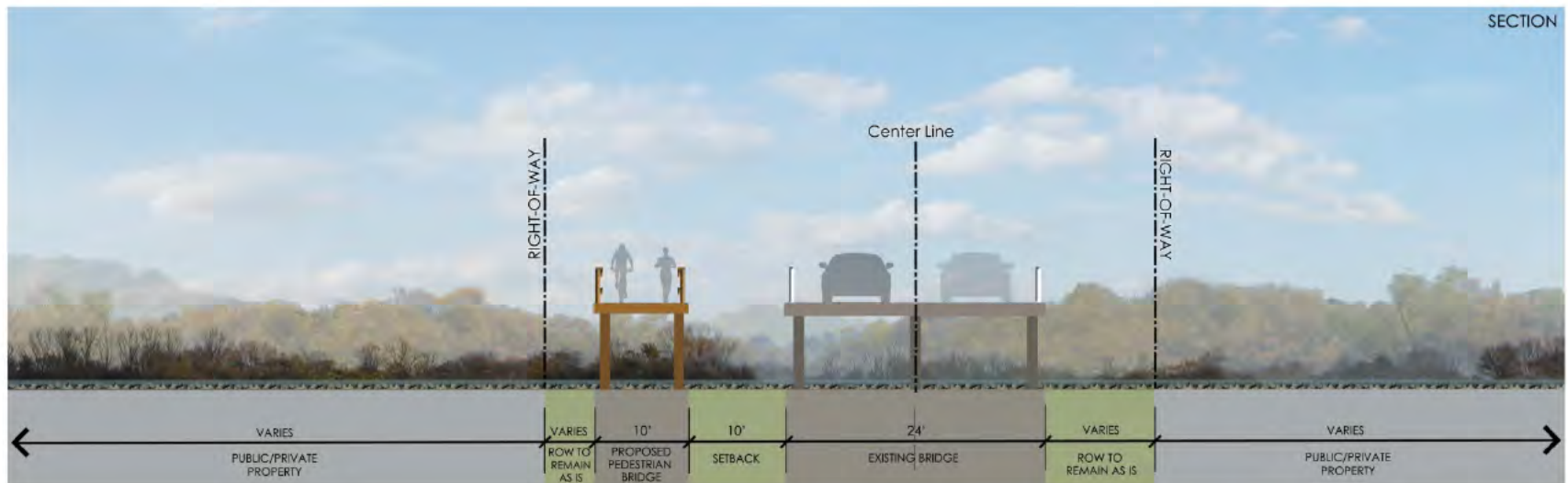
Not to Scale

Figure 29

Typical Bridge Plan along Hollister Street and Precedent Images

Figure shown is conceptual in nature and subject to change

Typical Bridge Section – Hollister St.



Not to Scale

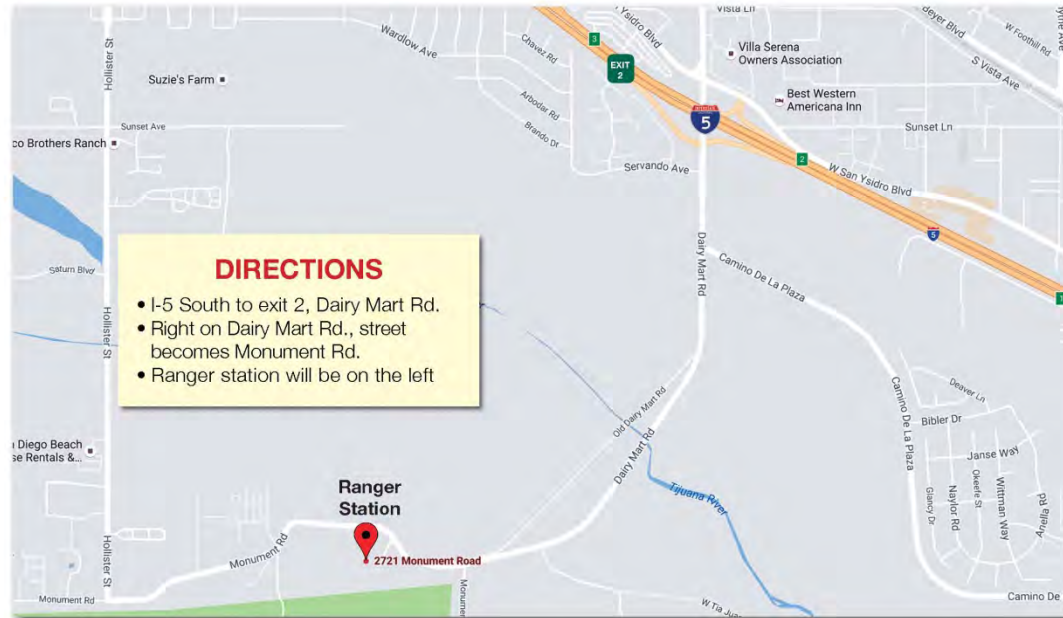
Figure 30
Typical Bridge Section along Hollister Street

Recommendations Summary

- Prioritize Development of:
 - Active Recreation Complex (Sports Fields)
 - Equestrian and Family Campground with Commons (C2 & C3)
 - Rentable Venues(R1 and/or R5)
- Other Recommendations:
 - Expand Community Garden
 - Bike Skills Park (R2)

PUBLIC WORKSHOP 2

Additional Information on the Tijuana River Valley Regional Park – Public Use Feasibility Study



Open House: 6 – 8 p.m. • Wednesday, Dec. 14

**Tijuana Valley Regional Park, Ranger Station
2721 Monument Road, San Diego, CA 92154**

Please join us at public workshop #2 to provide your input on potential improvements to the Tijuana River Valley Regional Park (TRVRP). This is your opportunity to see the proposed recreational activities for the Park.

For More Information

Melanie Tylke
858-966-1377
Melanie.Tylke@sdcounty.ca.gov
sdparks.org

