



County of San Diego

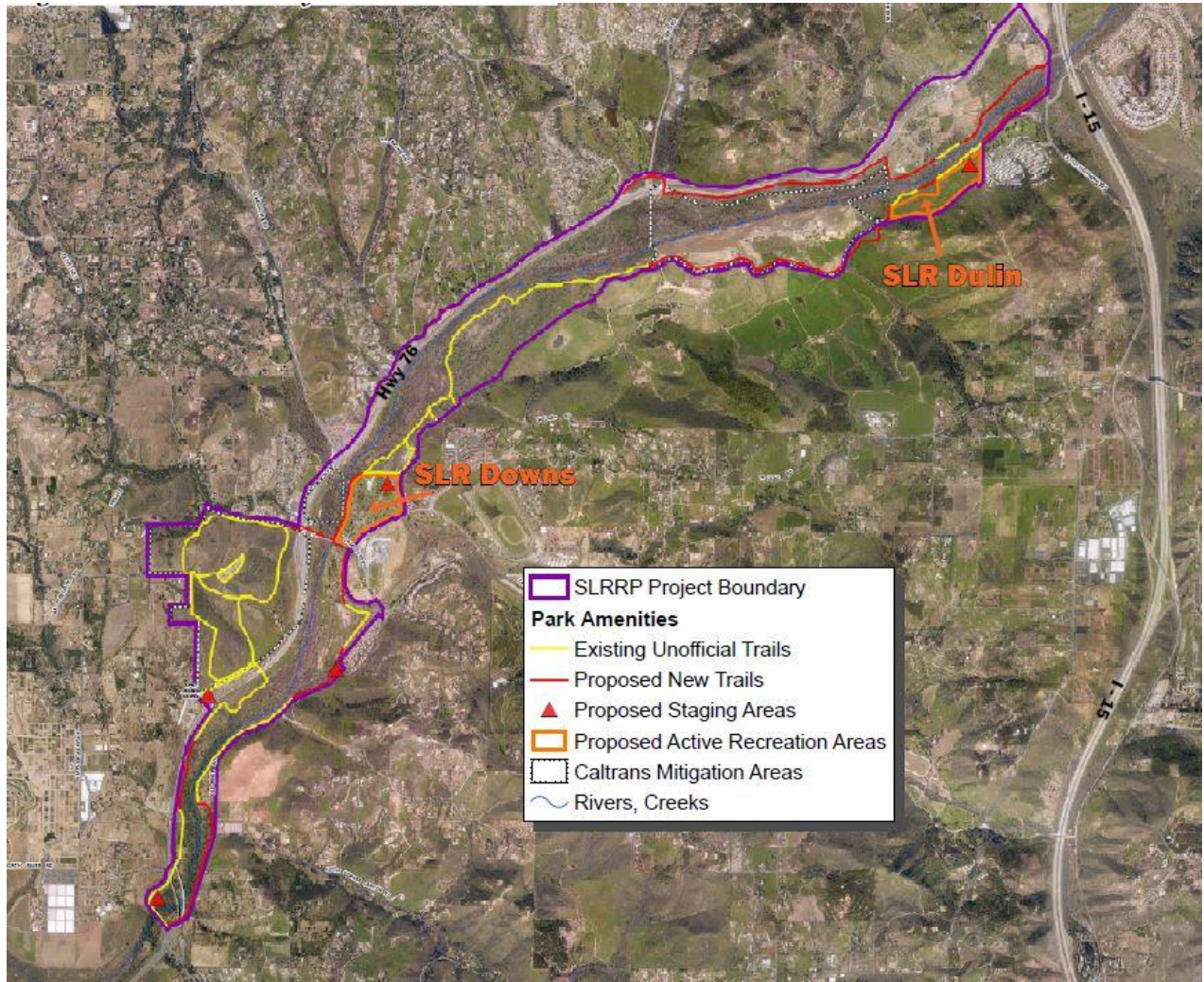
DEPARTMENT OF PARKS AND RECREATION

5500 OVERLAND AVENUE, SUITE 410, SAN DIEGO, CA 92123
Administrative Office (858) 694-3030
www.sdparks.org

BRIAN ALBRIGHT
DIRECTOR
(858) 966-1301

SAN LUIS REY RIVER PARK (SLRRP) UPDATES

May 2019 - July 2019



ACQUISITIONS

- The County has been purchasing land for the San Luis River Park since 2005 and has spent over \$25,000,000 on land acquisitions to date.
- The County is still acquiring parcels to meet the SLRRP Master Plan goal of acquiring 1,600 acres open space preserve, 40 acres of active recreation, and approximately 20 miles of trails.



- The County currently owns 548 acres of open space, with 405 acres of Caltrans mitigation land to be acquired in the next several years.
- SLRP Dulin and SLRP Downs combine to form 124 acres of active recreation within the San Luis Rey River Park Master Plan area, exceeding the 40-acres goal.

RESOURCE MANAGEMENT

- Environmental surveys are currently taking place for SR-76 Middle ROW Trail, SLR Dulin Active Recreation, and SLR Downs Active Recreation Projects.

PARK DEVELOPMENT

- SR-76 Middle ROW Trail Project: The County purchased a trail easement from the City of Oceanside for the SR-76 Middle ROW Trail. Environmental surveys are underway and project plans will be finalized after environmental review is complete. DPR is seeking funding next fiscal year to construct the trail.
- SLR Dulin Active Recreation Concept Plans: The County acquired the 68-acre SLR Dulin site in 2009. This active recreation site was included in the 2008 San Luis Rey River Park Master Plan. The proposed amenities include play areas, athletic fields, restrooms, multi-use trails, equestrian staging area, dog park, community garden, bicycle course, pickle ball courts, and bocce ball. The first public meeting was held on 4/29/19 to gather input on desired amenities. Concept designs will be developed later this summer. Environmental surveys are taking place now. Park design and environmental analysis are slated for completion in spring 2020.
- SLR Downs Active Recreation Concept Plans: The County acquired the 63-acre SLR Downs site in 2015. Although this specific site was anticipated as a private recreation site (golf course) in the San Luis Rey River Master Plan and not a public park site, it will include many of the proposed amenities for public parks from the SLR Master Plan. The proposed amenities include play areas, athletic fields, restrooms, multi-use trails, an equestrian staging area, bicycle course, disc golf course, skate park, dog park, small outdoor amphitheater, and fitness stations. The first public meeting was held on 4/29/19 to gather input on desired amenities. Concept designs will be developed later this summer. Environmental surveys are taking place now. Park design and environmental analysis are slated for completion in spring 2020.

PARK OPERATIONS

- Park Rangers continue to perform vegetation management and patrols of all SLRRP parcels.

Please direct all SLRRP inquiries to the following staff:

- **Trail & Park Development**
 - Nina Pisano, DPR Park Project Manager: Nina.Pisano@sdcounty.ca.gov
- **Operations & Maintenance**
 - Jake Enriquez, DPR Region Manager: Jake.Enriquez@sdcounty.ca.gov
- **Resource Management/Trail Planning/Master Plan**
 - Lorrie Bradley, DPR Land Use/Environmental Planner: Lorrie.Bradley@sdcounty.ca.gov
- **County Roads/Access**
 - Richard Chin, DPW Associate Transportation Specialist: Richard.Chin@sdcounty.ca.gov
- **SR-76 Highway**
 - Karen Jewel, Caltrans SR-76 Corridor Project Manager: Karen.Jewel@dot.ca.gov
 - Kareem Scarlett, Caltrans SR-76 Interim Project Manager: Kareem.Scarlett@dot.ca.gov