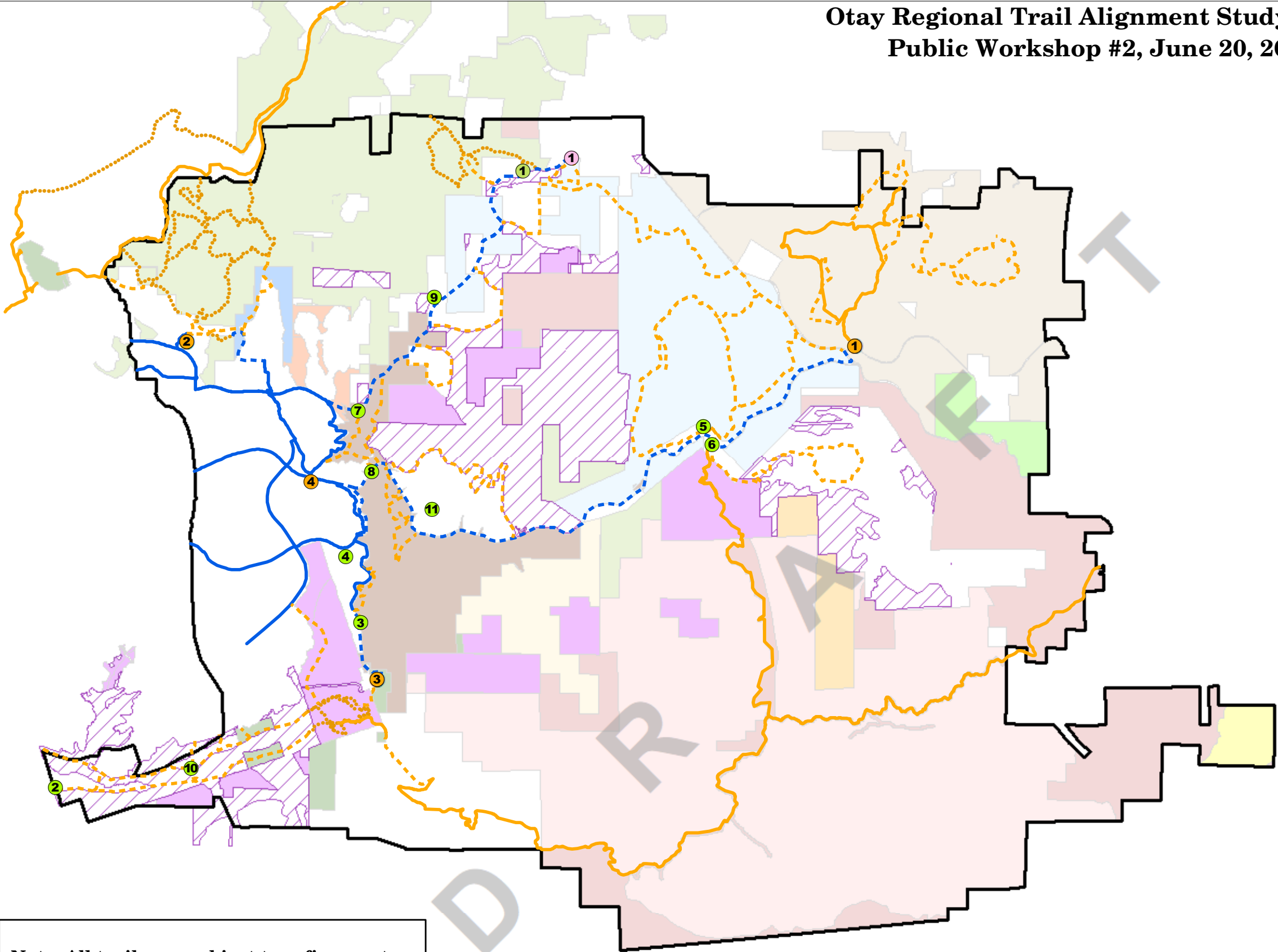


**Otay Regional Trail Alignment Study -
Public Workshop #2, June 20, 2018**



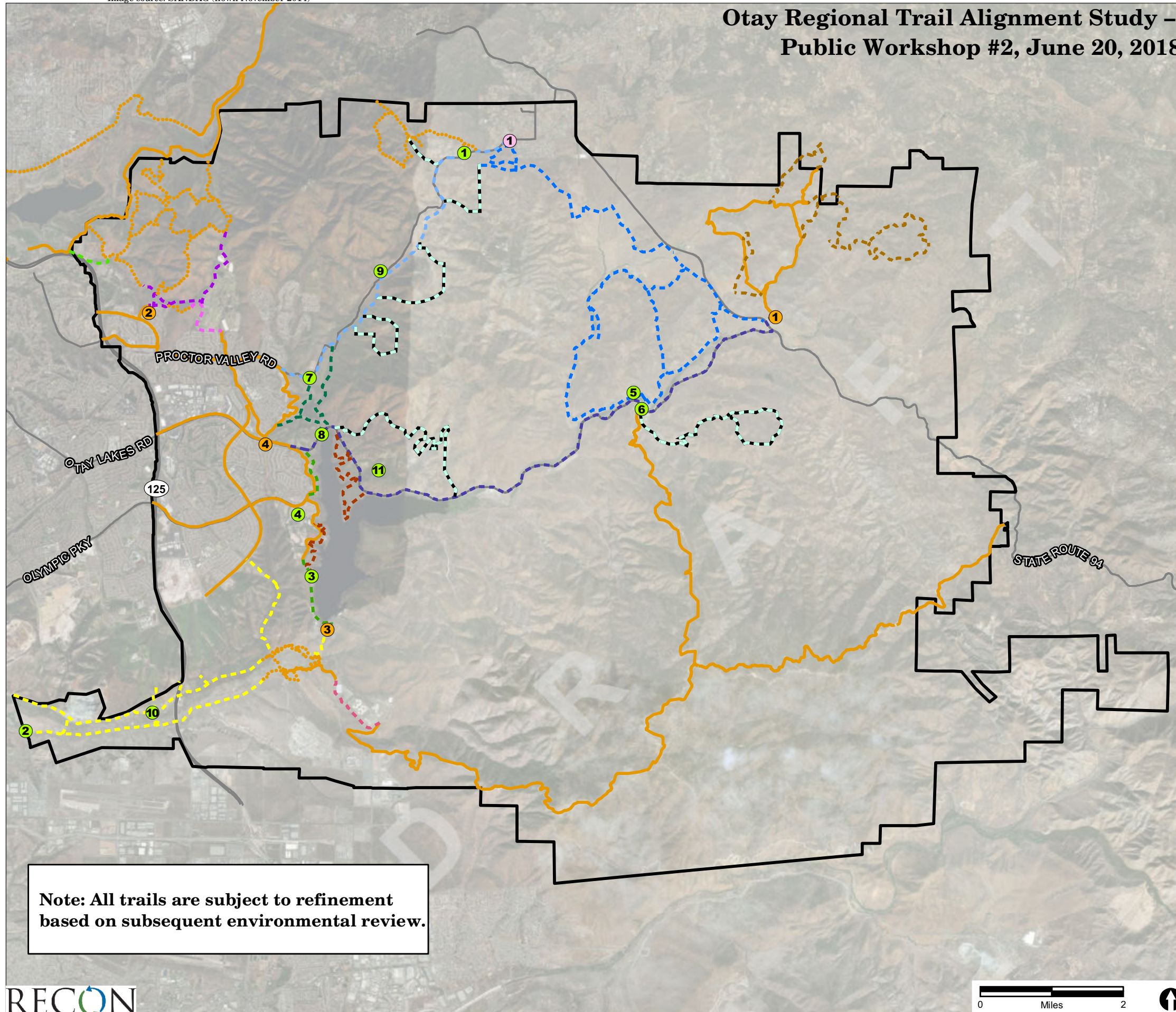
- Otay Trail Study Area
- Existing Trails
- Existing Pathways
- - - Trails Proposed by Other Planning Efforts
- Trails Under Consideration for This Study**
Note: Not currently open to the public
- - - Trails
- - - Pathways
- ① Existing Staging Area
- ② Potential Staging Area
- ③ Potential Trailhead
- Conserved Lands**
- San Diego National Wildlife Refuge
- Lawrence and Barbara Daley Preserve
- Rolling Hills Ranch Preserve
- Otay Mountain Ecological Reserve
- Rancho Jamul Ecological Reserve
- Hollenbeck Canyon Wildlife Area
- City of San Diego Cornerstone Lands
- San Miguel HMA
- Otay Ranch Preserve (conveyed parcels)
- BLM Wilderness
- BLM Public Lands
- Kuchamaa ACEC
- Cedar Canyon ACEC
- County DPR Managed Parcels
- Lands Designated for Conservation**
- Otay Ranch Preserve (to be conveyed)

Note: All trails are subject to refinement based on subsequent environmental review.



FIGURE 1
Overview of Trails Under Consideration for Trail Alignment Study

Otay Regional Trail Alignment Study – Public Workshop #2, June 20, 2018



- Otay Trail Study Area
- Major Arterials
- Existing Staging Area**
 - 1 Hollenbeck Canyon Wildlife Area (Honey Springs Entrance)
 - 2 Mount San Miguel Community Park
 - 3 Otay Lakes County Park
 - 4 Salt Creek Community Park
- Potential Staging Area**
 - 1 Echo Valley
 - 2 Heritage Road (Planning Area 20)
 - 3 Lower Otay Reservoir Boat Launch/Picnic Area (City of San Diego)
 - 4 Chula Vista Elite Athlete Training Center
 - 5 Pio Pico RV Resort North
 - 6 Pio Pico RV Resort South
 - 7 Proctor Valley Natural Resource Area (City of San Diego)
 - 8 Lower Otay Reservoir*
 - 9 Otay Ranch Village 14
 - 10 Otay Valley Regional Park Area 11 (Community Park)
 - 11 Otay Ranch Village 13
- Potential Trailhead**
 - 1 RJER/Proctor Valley Road
- Trails Under Consideration for This Study**
Note: Not currently open to the public
 - Upper Otay Lake Loop Trail
 - Rancho Jamul Ecological Reserve Trail System
 - Hollenbeck Canyon Trail System Expansion
 - Sweetwater River Trail Vernal Pool Re-alignment
 - Otay Lakes Road Pathway
 - Otay Mountain Truck Trail Expansion
 - Proctor Valley Road Pathway
 - Lower Otay Lake Trail
 - Mother Miguel-Rockhouse Loop Connector
 - Rolling Hills Ranch Pathway Expansion
 - Otay River Valley Trail
 - Lower Otay Lake Pathway
 - Otay Ranch Village Perimeter/Connector Trails**

*Staging for Lower Otay Lake Pathway will be determined based on the final configuration of Otay Lakes Road.

**Final alignment to be determined based on development configurations for Otay Ranch.

Note: All trails are subject to refinement based on subsequent environmental review.

FIGURE 2
Trails Under Consideration for Trail Alignment Study (Detail)