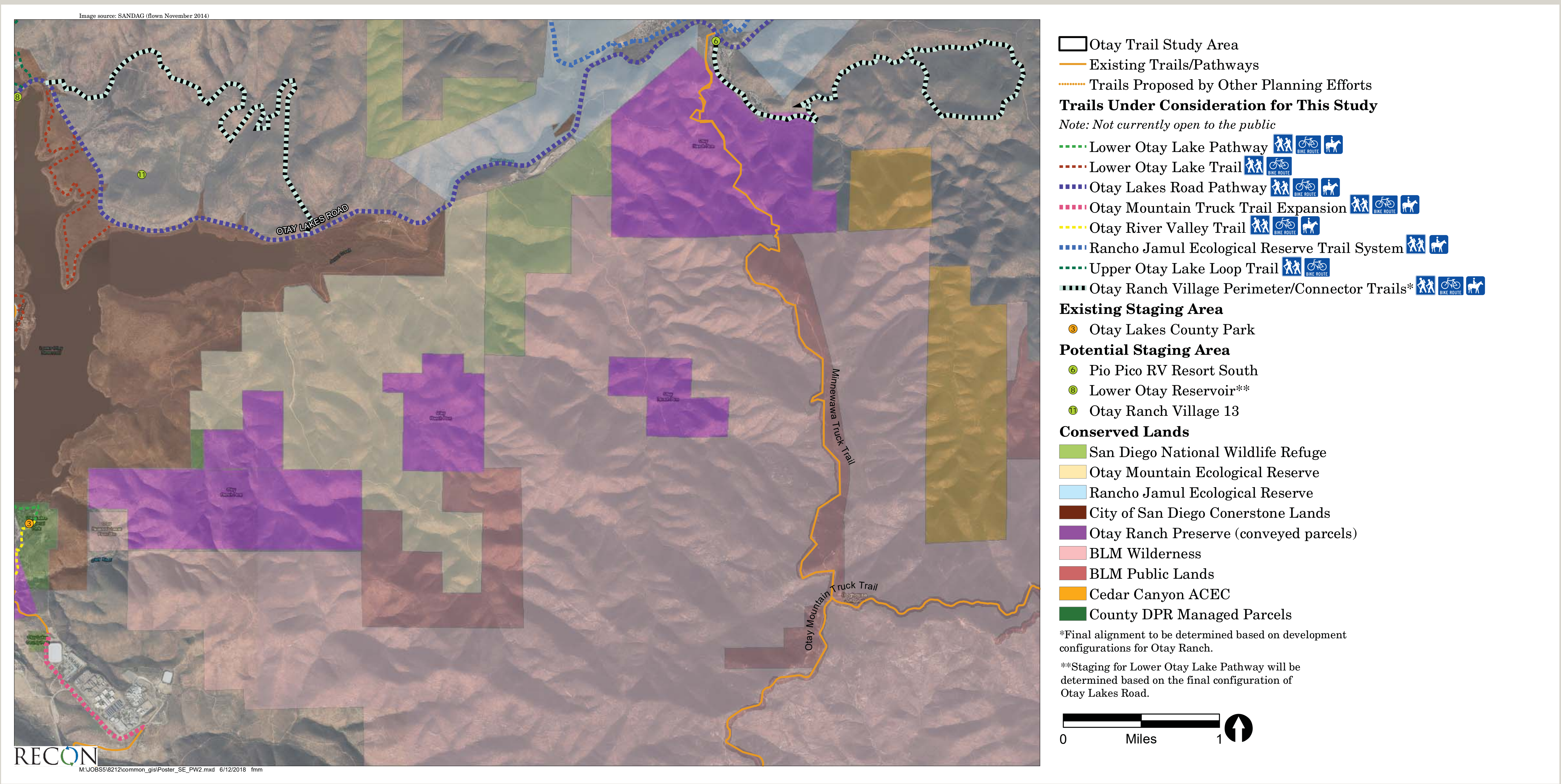


# OTAY REGIONAL TRAIL ALIGNMENT STUDY

## Otay-Dulzura Area



### --- Otay Mountain Truck Trail Expansion

*An extension of the existing Otay Mountain Truck Trail to provide a connection from the Otay Lakes County Park to the Bureau of Land Management (BLM) Wilderness and Public Lands.*

**Type:** Single-track or double-track trails

**Allowed Uses:** Hiking, biking & horseback riding

**Distance:** 1.1 miles

**Level of Difficulty:** Challenging (rolling to hilly terrain with long climbs or descents)

### --- Otay Lakes Road Pathway

*A pathway bordering Otay Lakes Road, providing scenic views of Lower Otay Reservoir. This pathway will provide connections from Eastlake and Otay Ranch to trails at Upper and Lower Otay Reservoir, Rancho Jamul Ecological Reserve, and Otay Ranch perimeter trails.*

**Type:** Pathway

**Allowed Uses:** Hiking, biking & horseback riding

**Distance:** 9.1 miles

**Level of Difficulty:** Leisurely (level or gently sloping terrain)



### --- Otay Ranch Village Perimeter/Connector Trails

*New trails which would follow the perimeter of future Otay Ranch developments, providing scenic mountain and reservoir vistas and connections to San Diego National Wildlife Refuge, Rancho Jamul Ecological Reserve, and Upper Otay Reservoir. The final alignments will be determined based on the development configurations for Otay Ranch in these areas.*

**Type:** Single-track or double-track trails

**Allowed Uses:** Hiking, biking & horseback riding

**Distance:** 13.8 miles

**Level of Difficulty:** To be determined based on final development configuration

### — Minnewawa Truck Trail

*This challenging trail provides a connection from Dulzura to the Otay Mountain Truck Trail, BLM Wilderness, and BLM Public Lands. This trail also provides vantage points of Lower Otay Reservoir and Otay Mountain.*

**Type:** Double-track trail

**Allowed Uses:** Hiking, biking, & horseback riding

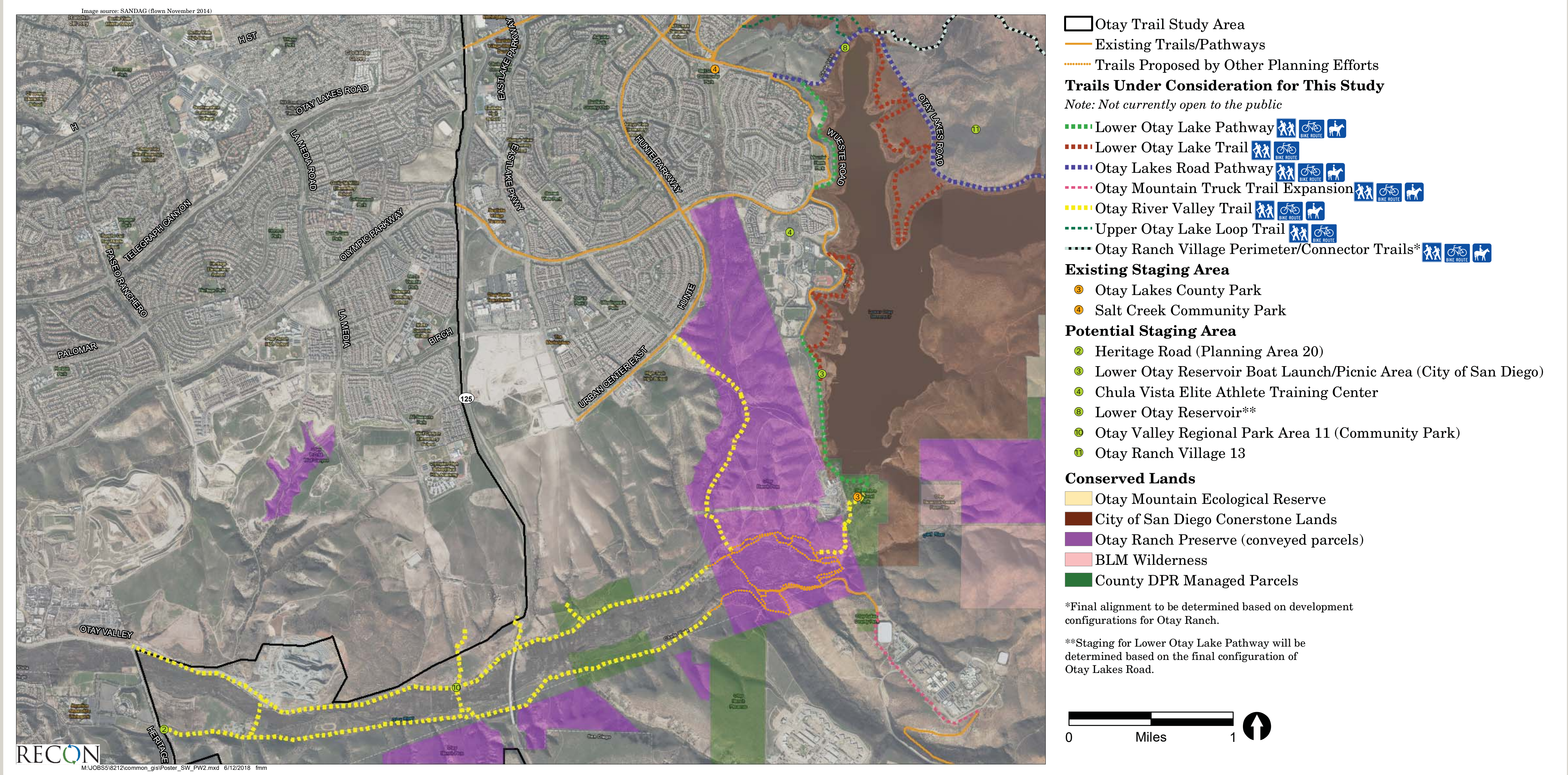
**Distance:** 5.9 miles

**Level of Difficulty:** Difficult (very steep slopes with long climbs or descents)



# OTAY REGIONAL TRAIL ALIGNMENT STUDY

## Otay Valley Area



### Otay River Valley Trail

*This trail will span both sides of the Otay River, providing scenic views of the Otay River Valley and providing an interconnected trail system within the Otay Valley Regional Park. This trail will connect to Main Street and Heritage Road to the west, Otay Ranch to the north, and Otay Lakes County Park to the east.*

**Type:** Single-track or double-track trails

**Allowed Uses:** Hiking, biking & horseback riding

**Distance:** 10.9 miles

**Level of Difficulty:** Challenging (rolling to hilly terrain with long climbs or descents)

### Otay Lakes Road Pathway

*A pathway bordering Otay Lakes Road, providing scenic views of Lower Otay Reservoir. This pathway will provide connections from Eastlake and Otay Ranch to trails at Upper and Lower Otay Reservoir, Rancho Jamul Ecological Reserve, and Otay Ranch perimeter trails.*

**Type:** Pathway

**Allowed Uses:** Hiking, biking & horseback riding

**Distance:** 9.1 miles

**Level of Difficulty:** Leisurely (level or gently sloping terrain)



### Lower Otay Lake Trail

*These single-track trails will connect to Otay Lakes Road and Proctor Valley Road Pathway, providing an interconnected loop around Upper Otay Reservoir, to the Lower Otay Lake Pathway. This trail system is envisioned to be part of the Otay Valley Regional Park. Other recreational opportunities from this trail will include fishing, bird-watching, and picnicking.*

**Type:** Single-track trail

**Allowed Uses:** Hiking, biking & fishing

**Distance:** 4.1 miles

**Level of Difficulty:** Leisurely (level or gently sloping terrain)

### Lower Otay Lake Pathway

*An extension of the existing Chula Vista Greenbelt pathway system along Wueste Road providing scenic views of Lower Otay Reservoir and the San Ysidro Mountains. This pathway will provide connections to Otay Lakes County Park and the trails at Lower Otay Reservoir.*

**Type:** Pathway

**Allowed Uses:** Hiking, biking & horseback riding

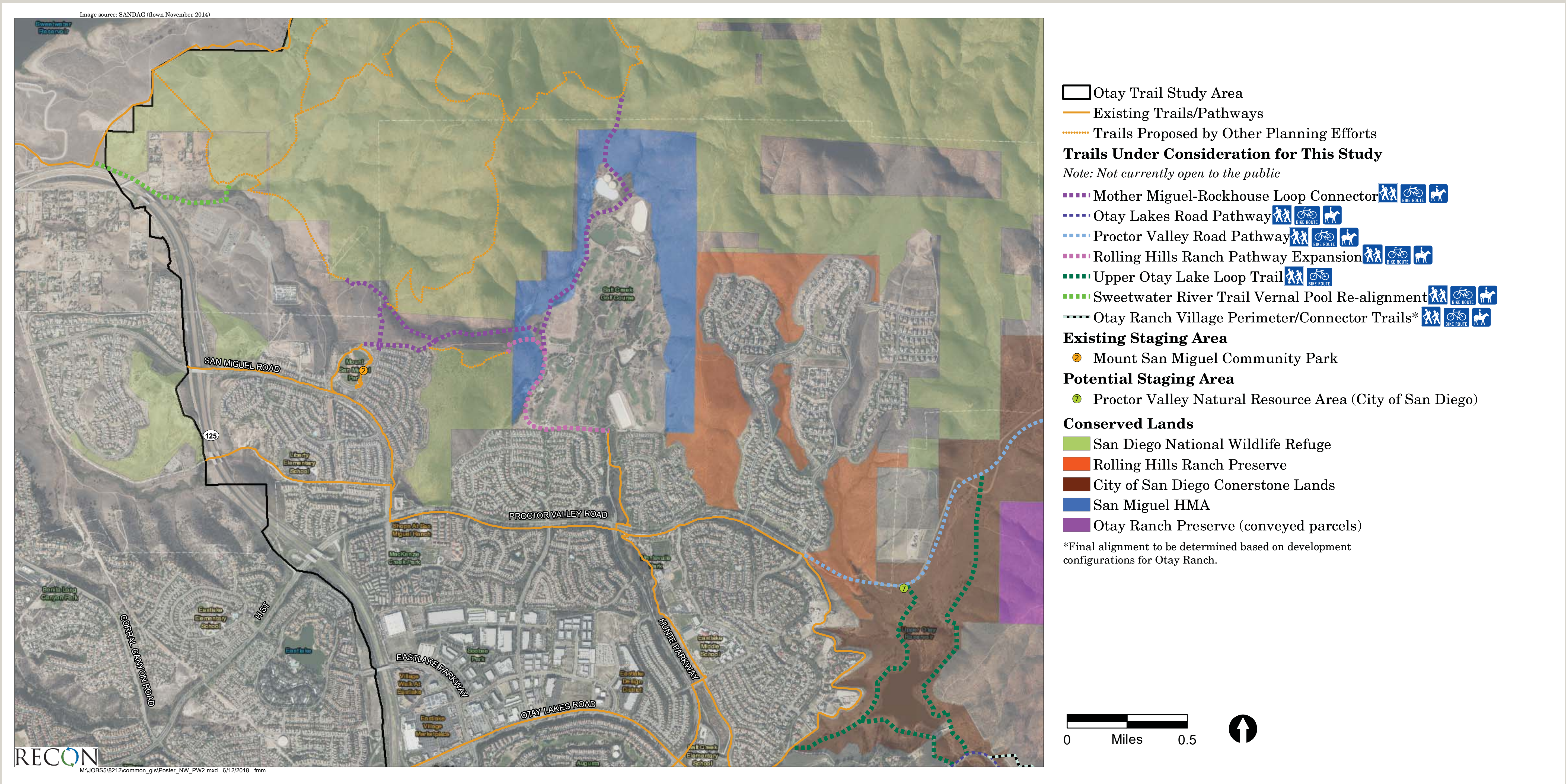
**Distance:** 2.0 miles

**Level of Difficulty:** Leisurely (level or gently sloping terrain)



# OTAY REGIONAL TRAIL ALIGNMENT STUDY

## Eastlake Area



### Upper Otay Lake Loop Trail

These single-track trails will connect to Otay Lakes Road and Proctor Valley Road Pathway, providing an interconnected loop around Upper Otay Reservoir to the Lower Otay Lake Pathway. This trail system is envisioned to be part of the Otay Valley Regional Park. Other recreational opportunities from this trail will include fishing, bird-watching, and picnicking.

**Type:** Single-track trail  
**Allowed Uses:** Hiking, biking & fishing  
**Distance:** 2.9 miles  
**Level of Difficulty:** Leisurely (level or gently sloping terrain)

### Rolling Hills Ranch Pathway Expansion

Expansion of the existing pathway system in Rolling Hills Ranch to provide connections to San Diego National Wildlife Refuge and Mount San Miguel Community Park.

**Type:** Pathway  
**Allowed Uses:** Hiking, biking & horseback riding  
**Distance:** 0.9 miles  
**Level of Difficulty:** Moderate (rolling or hilly terrain with shorter, steeper slopes)



### Mother Miguel-Rockhouse Loop Connector

Expansion of the planned Mother Miguel trail system in San Diego National Wildlife Refuge to create a loop system on Mother Miguel, as well as additional trails to provide scenic views of Rickey Pond and the San Miguel Habitat Management Area.

**Type:** Single-track & double-track trails  
**Allowed Uses:** Hiking, biking & horseback riding  
**Distance:** 2.7 miles  
**Level of Difficulty:** Moderate (rolling or hilly terrain with shorter, steeper slopes)

### Sweetwater River Trail Vernal Pool Re-alignment

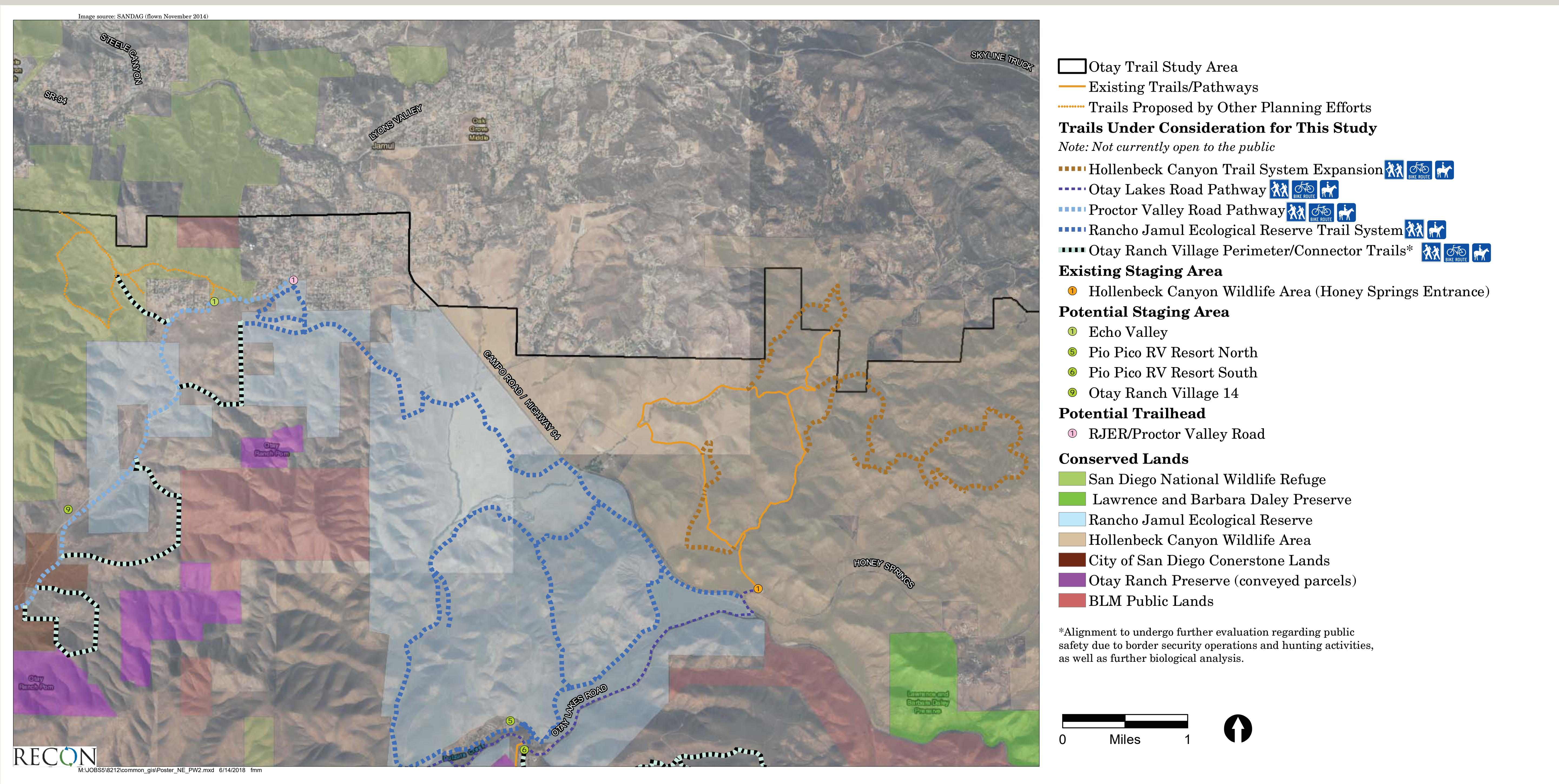
This trail re-alignment will provide a connection from the Sweetwater Riding and Hiking Trail to trails within the San Diego National Wildlife Refuge and pathways in Rolling Hills Ranch. The revised alignment provides a more sustainable trail that avoids sensitive vernal pool habitat.

**Type:** Single-track & double-track trail  
**Allowed Uses:** Hiking, biking & horseback riding  
**Distance:** 2.0 miles  
**Level of Difficulty:** Leisurely (level or gently sloping terrain)



# OTAY REGIONAL TRAIL ALIGNMENT STUDY

## Jamul Area



### ⋯ Rancho Jamul Ecological Reserve Trail System

A new trail system that will provide various loops with views of different habitats within the ecological reserve. This area provides for wildlife viewing opportunities along the trail system.

**Type:** Double-track trails  
**Allowed Uses:** Hiking; Horseback riding by special permit only  
**Distance:** 15.9 miles  
**Level of Difficulty:** Moderate (rolling or hilly terrain with shorter, steeper slopes)

### ⋯ Proctor Valley Road Pathway

A pathway system bordering the re-aligned Proctor Valley Road. The pathway will provide connections from the communities of Otay Ranch, Eastlake, and Jamul to trail systems in San Diego National Wildlife Refuge, Rancho Jamul Ecological Reserve, and Upper Otay Reservoir.

**Type:** Pathway  
**Allowed Uses:** Hiking, biking & horseback riding  
**Distance:** 5.4 miles  
**Level of Difficulty:** Leisurely (level or gently sloping terrain)



### ⋯ Hollenbeck Canyon Wildlife Area Trail Expansion

This trail expansion will expand the existing trail system in Hollenbeck Canyon to include trails to scenic vista points and an expanded loop system. This area provides for wildlife viewing opportunities along the trail system.

**Type:** Double-track trail  
**Allowed Uses:** Hiking, biking & horseback riding  
**Distance:** 9.0 miles  
**Level of Difficulty:** Difficult (very steep slopes with long climbs or descents)

### ⋯ Otay Ranch Village Perimeter/Connector Trails

New trails which would follow the perimeter of future Otay Ranch developments, providing scenic mountain and reservoir vistas and connections to San Diego National Wildlife Refuge, Rancho Jamul Ecological Reserve, and Upper Otay Reservoir. The final alignments will be determined based on the development configurations for Otay Ranch in these areas.

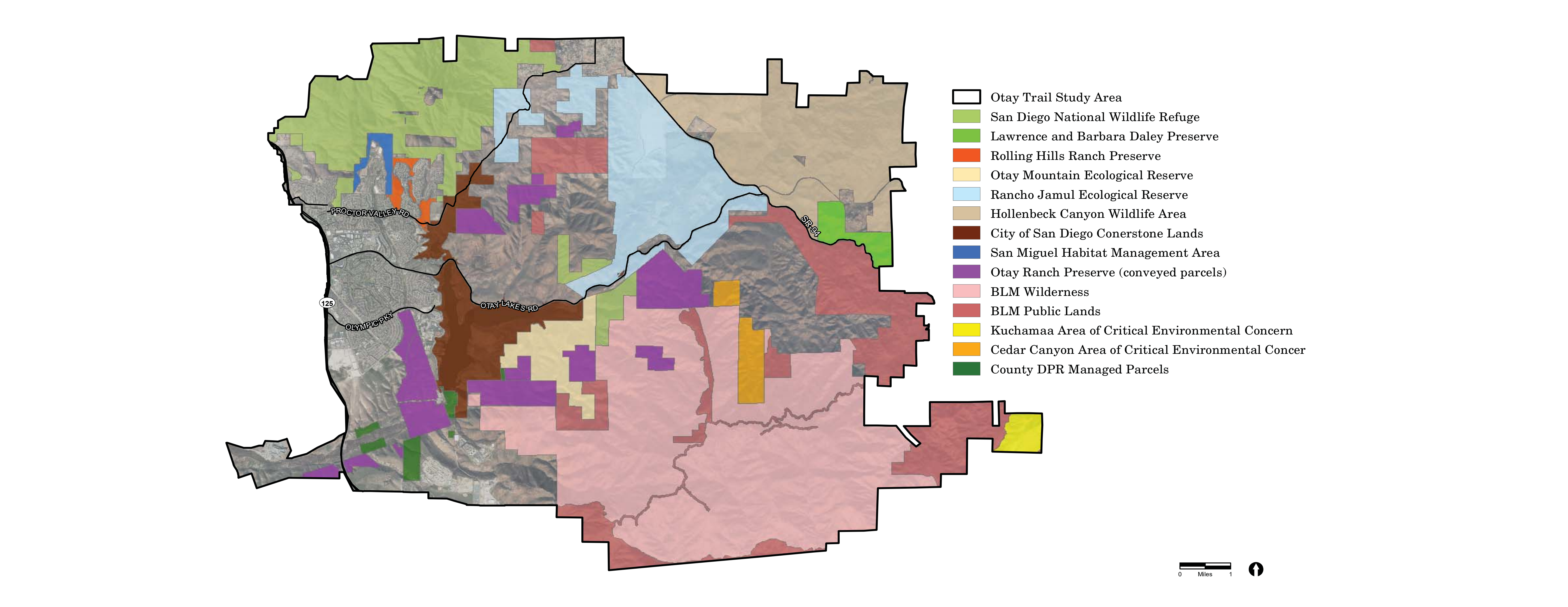
**Type:** Single-track or double-track trails  
**Allowed Uses:** Hiking, biking & horseback riding  
**Distance:** 13.8 miles  
**Level of Difficulty:** To be determined based on final development configuration



# Multiple Species Conservation Program

The Multiple Species Conservation Program (MSCP) preserves San Diego's native habitats and wildlife for future generations. It works across political boundaries, providing a unique framework for region-wide conservation efforts – balancing conservation with streamlined building regulations and permit processes to support healthy community growth. The MSCP ensures compliance with the Federal Endangered Species Act, State Endangered Species Act, and State Natural Communities Conservation Planning Act. The goal of the MSCP is to acquire and permanently protect 171,917 acres in San Diego County. The overall effect of the MSCP is that it provides for large, connected preserve areas that address a number of species needs at the habitat level. This creates a more efficient and effective preserve system as well as better protection for the rare, threatened andendangered species in the region.

Since the MSCP was adopted in 1998, thousands of acres of land have been conserved in different preserves and added to the MSCP by local, state and federal agencies. The different preserves conserved by the MSCP in the study area total 51,455 acres and are shown below.



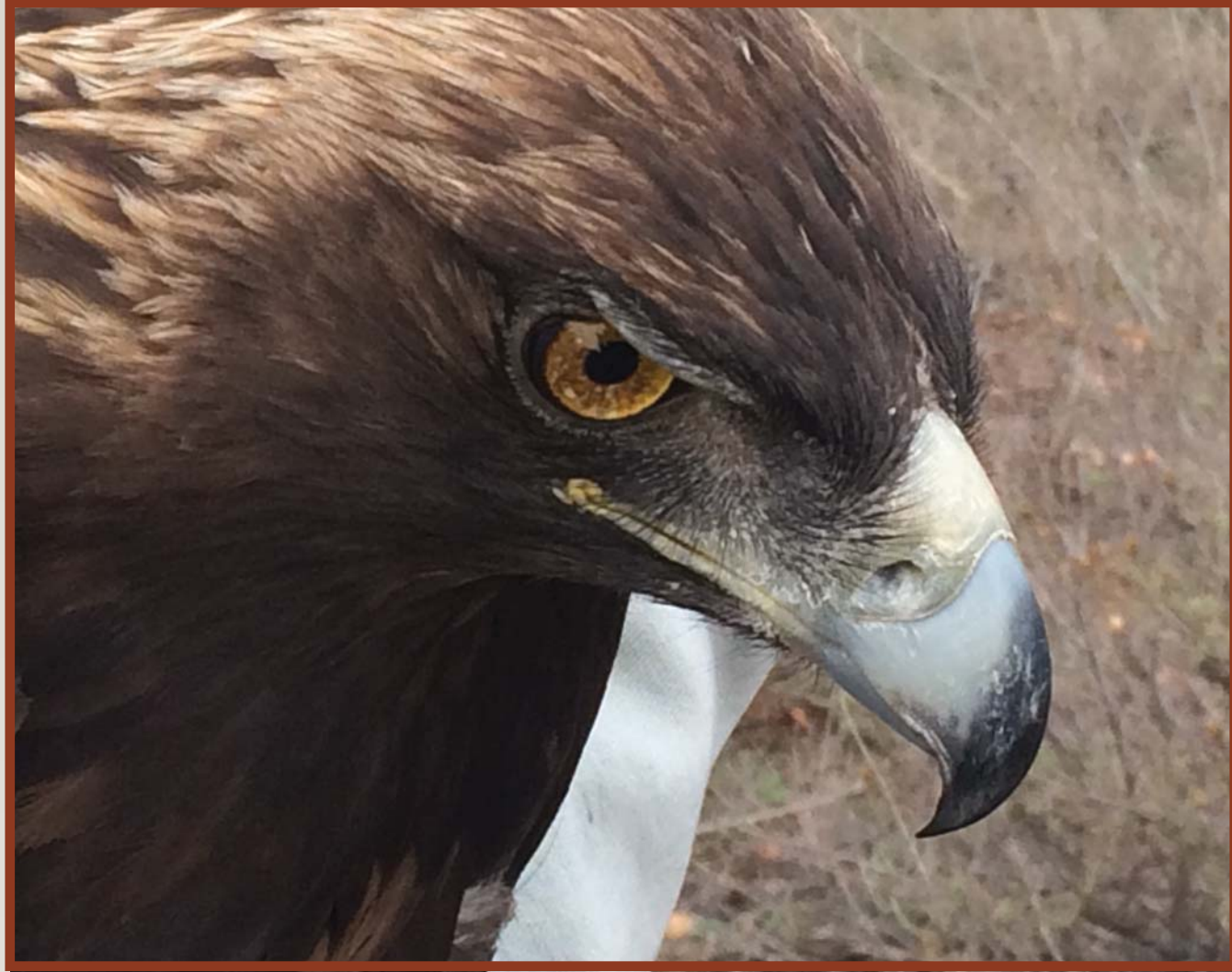
## Why is it important to protect lands conserved by the Multiple Species Conservation Program?

The MSCP is important because it conserves San Diego’s natural areas and quality of life. Conserved lands within the MSCP protect San Diego’s diversity of native plants and animals, including 85 of San Diego’s most sensitive and endangered species.

Here are a few species the MSCP works to protect in the study area:



**Western Burrowing Owl**  
Once prevalent throughout the entire county, the population of this species dropped to an estimated 47 pairs in San Diego in 2007. Currently, breeding populations of this species in San Diego are limited to Otay Mesa and Ramona. Recovery efforts to expand the breeding population of this species are underway, particularly in south county where core populations of this species reside. Protecting, enhancing, and restoring breeding habitat is paramount to creating a resilient, self-sustaining population of this species in San Diego.



**Golden Eagle**  
With a wingspan of up to 6.5 feet, golden eagles are highly mobile and can be observed over a wide variety of landscapes in the study area. These raptors are listed as a fully protected species in California. The MSCP identified 11 active golden eagle nesting territories within south county, and requires measures to avoid human disturbance while nests are active.



**Mexican Flannelbush**  
This rare plant is federally endangered and state listed as rare due to its limited range. The entire existing population in the U.S. occurs in the study area on Otay Mountain, with a small population (less than 20 individuals) in Baja California. Historic populations used to occur in Proctor Valley, Point Loma and the Border Monument. Protecting the last remaining population in the U.S. is critical to the survival of this species.



**Quino Checkerspot Butterfly**  
This federally endangered species was historically one of the most widespread and abundant butterflies in coastal southern California. However, it is now restricted to localities in San Diego and Riverside Counties and northern Baja California. Regionally significant populations occur along ridgetops in the study area, and provide a critical movement corridor between Mexico and the U.S.



**What can you do to help protect the species and habitats conserved by the Multiple Species Conservation Program?**

- Stay on designated trails at all times
- Obey all rules and regulations, including use restrictions, temporary closures, and posted hours (sunrise to sunset)
- Leave no trace — pack it in, pack it out (dispose of waste properly) and leave what you find (rocks, plants and other objects)
- Respect wildlife — avoid disturbing wildlife and their habitats
- Limit noise while in habitat areas
- Obey leash laws where dogs are allowed
- Report unauthorized activity



Planning Context



Environmental Regulations

The study area contains numerous sensitive biological resources, such as sensitive vegetation communities, plant and wildlife species, and jurisdictional wetlands and waters. The study area also contains sensitive archaeological resources such as tribal cultural resources and historic buildings and structures. These resources are subject to numerous federal, state, and local regulations. Where trail alignments under consideration by this study occur in proximity to these resources, the study will need to comply with the criteria set forth in these regulatory contexts:

- California Environmental Quality Act (CEQA)
- National Environmental Protection Act (NEPA)
- Federal Endangered Species Act
- California Endangered Species Act
- California Natural Communities Conservation Planning Act
- Rivers and Harbors Act
- Clean Water Act
- Porter-Cologne Water Quality Control Act
- National Historic Preservation Act
- Native American Sacred Lands Act

Resources protected by these regulations include chamise chaparral habitat (above) and (from left to right) Dunn’s mariposa lily, vernal pool habitats, Thorne’s hairstreak butterfly and coastal cactus wren.



Planning Documents

There are numerous documents that guide trail planning in the study area. For this trail study, over 20 documents were reviewed including trail plans, resource management plans, regional planning documents and regulatory documents. These documents provide information regarding permitted public access and the regulatory processes for trail development. These documents also contain trail siting and design criteria, which include standards for safe and accessible trails.

Architectural and Transportation Barriers Compliance Board	<ul style="list-style-type: none"><li>Architectural Barriers Accessibility Act Final Guidelines for Outdoor Developed Areas</li></ul>
Bureau of Land Management	<ul style="list-style-type: none"><li>South Coast Resource Management Plan</li><li>Manual 6340 - Management of Designated Wilderness Areas (Public)</li></ul>
California Department of Fish and Wildlife	<ul style="list-style-type: none"><li>Hollenbeck Canyon Wildlife Area Land Management Plan</li><li>Rancho Jamul Ecological Reserve Land Management Plan</li><li>Waterfowl and Upland Game Hunting &amp; Department Lands Public Use Regulations</li><li>California Code of Regulations – Title 14. Natural Resources</li></ul>
City of Chula Vista	<ul style="list-style-type: none"><li>Multiple Species Conservation Program Subarea Plan</li><li>Greenbelt Master Plan</li><li>Otay Ranch General Development Plan</li></ul>
City of San Diego	<ul style="list-style-type: none"><li>Multiple Species Conservation Program Subarea Plan</li><li>Guidelines for the Establishment, Use, and Management of Public Access Trails on Public Utilities Land</li></ul>
County of San Diego	<ul style="list-style-type: none"><li>Community Trails Master Plan</li><li>Multiple Species Conservation Program Subarea Plan</li><li>Final Multiple Species Conservation Program MSCP Plan</li><li>Biological Mitigation Ordinance</li><li>Otay Ranch Subregional Plan, Vol. 2</li></ul>
Otay Water District	<ul style="list-style-type: none"><li>San Miguel Habitat Management Area Mitigation Bank Establishment and Operating Procedures</li></ul>
Otay Valley Regional Park JEPAPartners	<ul style="list-style-type: none"><li>Otay Valley Regional Park Trail Guidelines</li><li>Otay Valley Regional Park Concept Plan</li></ul>
U.S. Fish & Wildlife Service	<ul style="list-style-type: none"><li>San Diego National Wildlife Refuge Draft Comprehensive Conservation Plan/ Environmental Assessment</li><li>Service Manual Chapters – Series 600, Land Use Management Series</li></ul>