



Otay Regional Trail Alignment Study

Public Workshop #2 – June 20th, 2018 from 5:30-8 p.m.

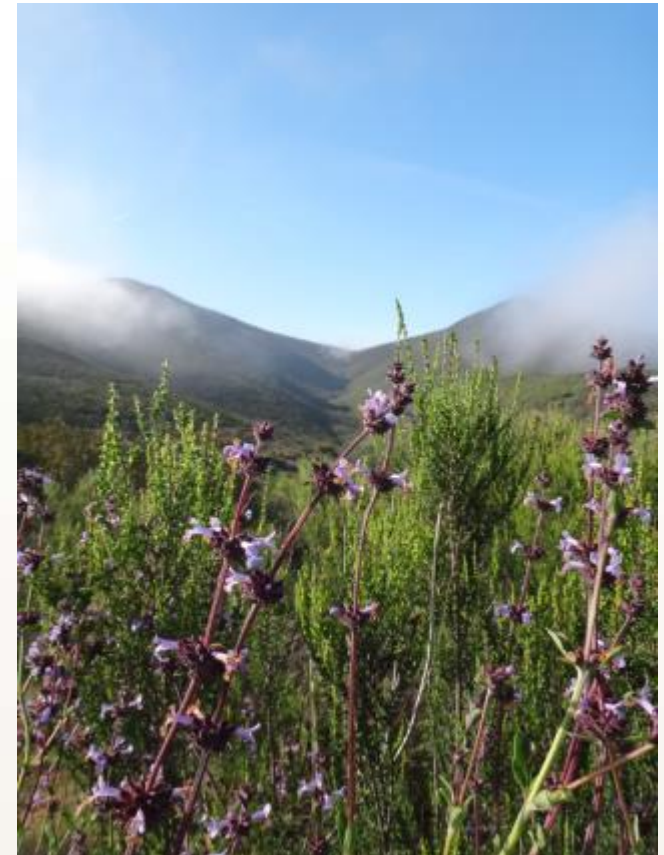


Otay Regional Trail Alignment Study

Purpose of the Study

A multi-agency planning effort to create a coordinated and sustainable trail system that enhances recreation and provides trail connections while balancing the need to protect sensitive environmental resources.

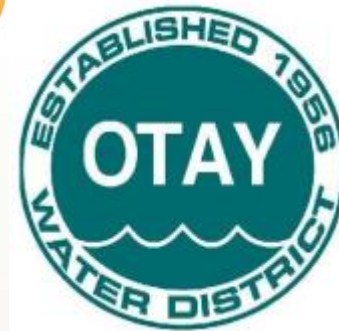
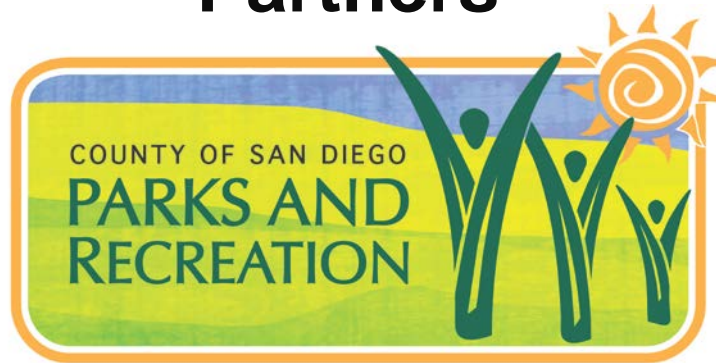
- A multi-use trail system
 - Hiking
 - Mountain biking
 - Equestrian
- Considers planned trails
 - Community Trails Master Plan
 - Other planning documents





Otay Regional Trail Alignment Study

Partners

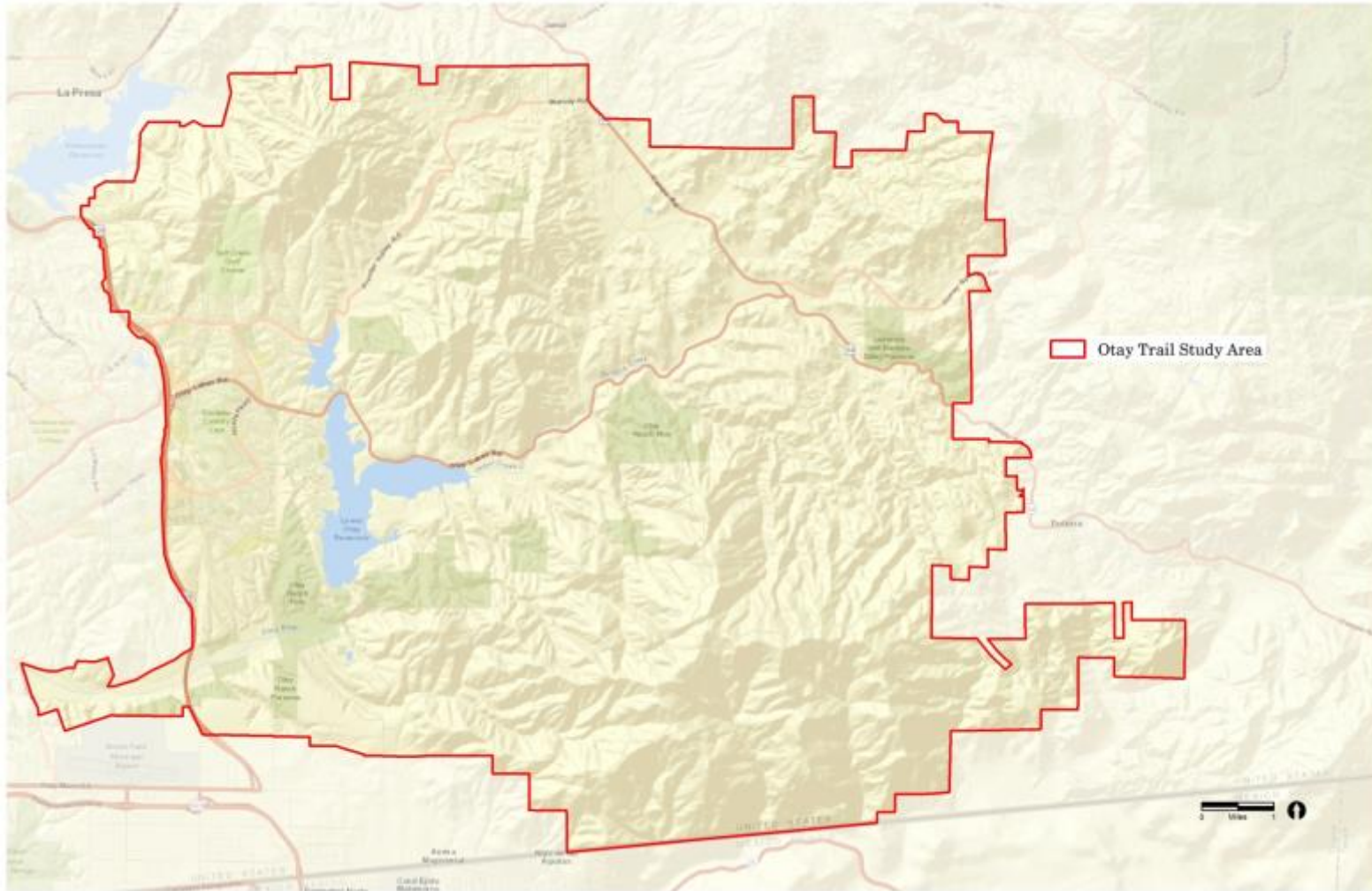


RECON



Otay Regional Trail Alignment Study

Regional Location





Otay Regional Trail Alignment Study

Description of the Study Area

- 72,523 acres under private & public ownership
- 14 ecological preserves & management areas
- Complex regulatory structures that govern public use
- Numerous sensitive biological & cultural resources





Otay Regional Trail Alignment Study

Guiding Principles



Develop a quality recreational experience that:

- Avoids sensitive ecological areas
- Develops trails in areas already influenced by human activity
- Provides buffers to protect sensitive ecological and hydrologic systems
- Develops appropriately when trails do intersect with sensitive areas
- Integrates trail connections with private developments



Otay Regional Trail Alignment Study

Key Environmental Considerations

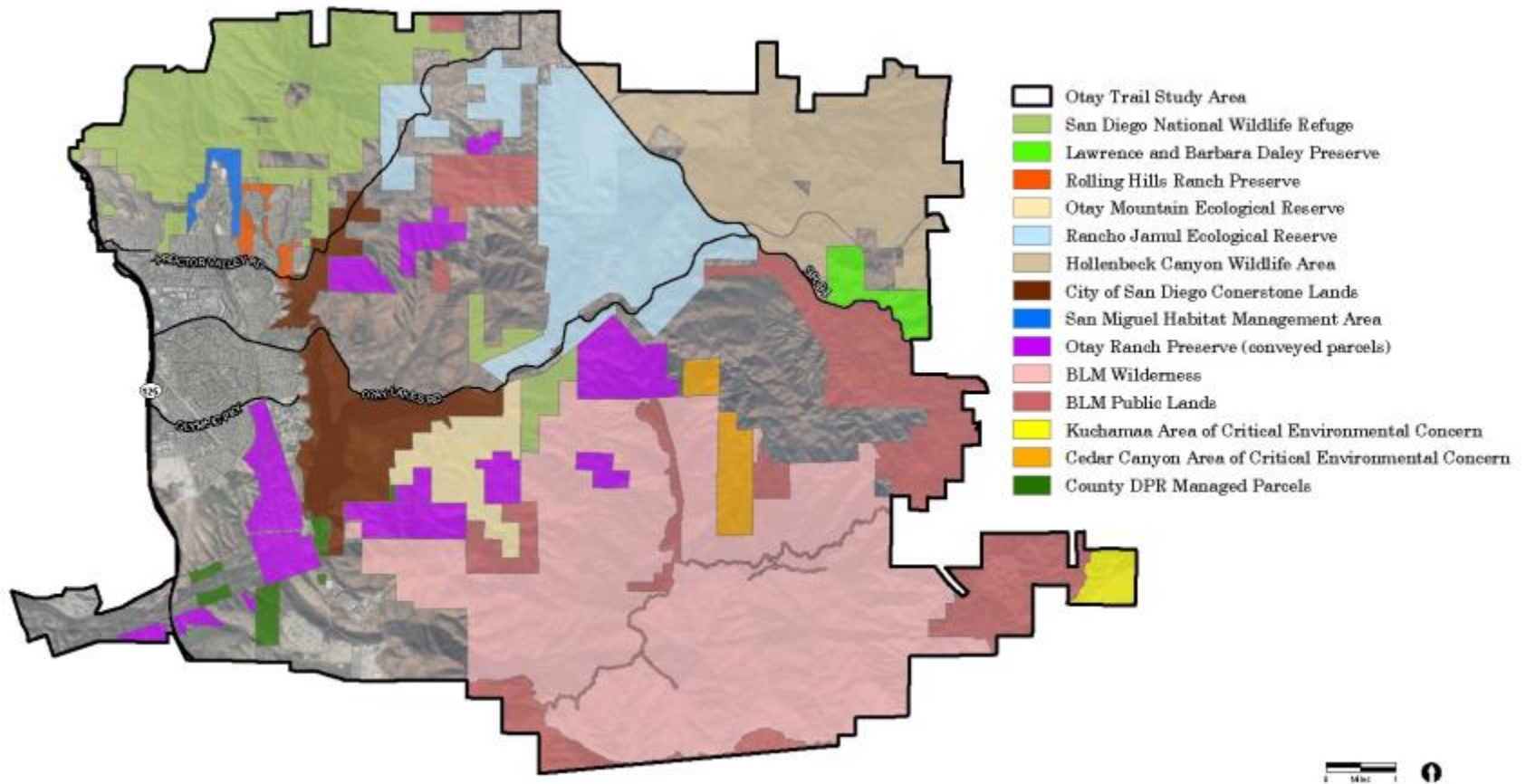
- Biological Resources
- Cultural Resources
- Aquatic Resources
- Soils
- Slope
- Land Use Conflicts





Otay Regional Trail Alignment Study

Conserved Lands

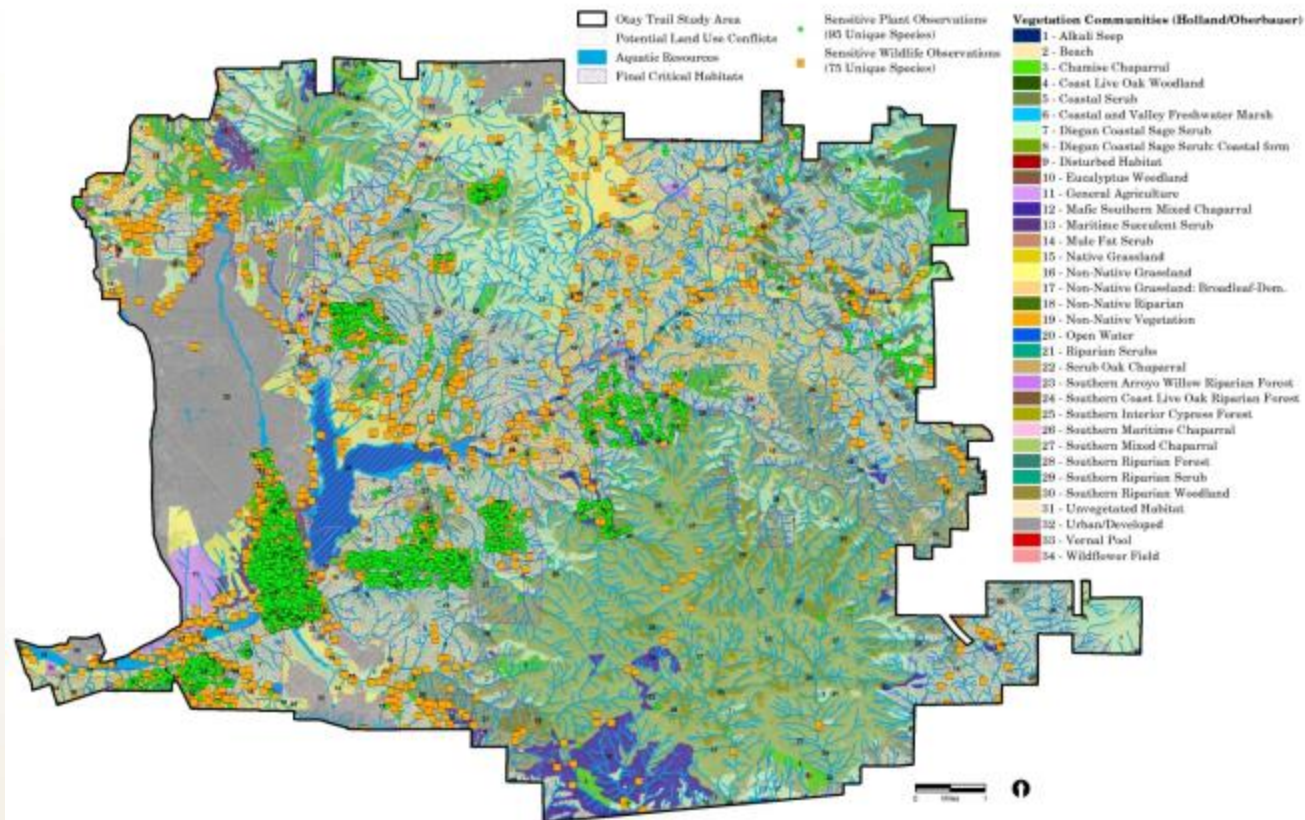




Otay Regional Trail Alignment Study

Trail Planning Process

- ✓ Comprehensive Literature Review
- ✓ GIS Database Review
- ✓ Preliminary Environmental Constraints Mapping



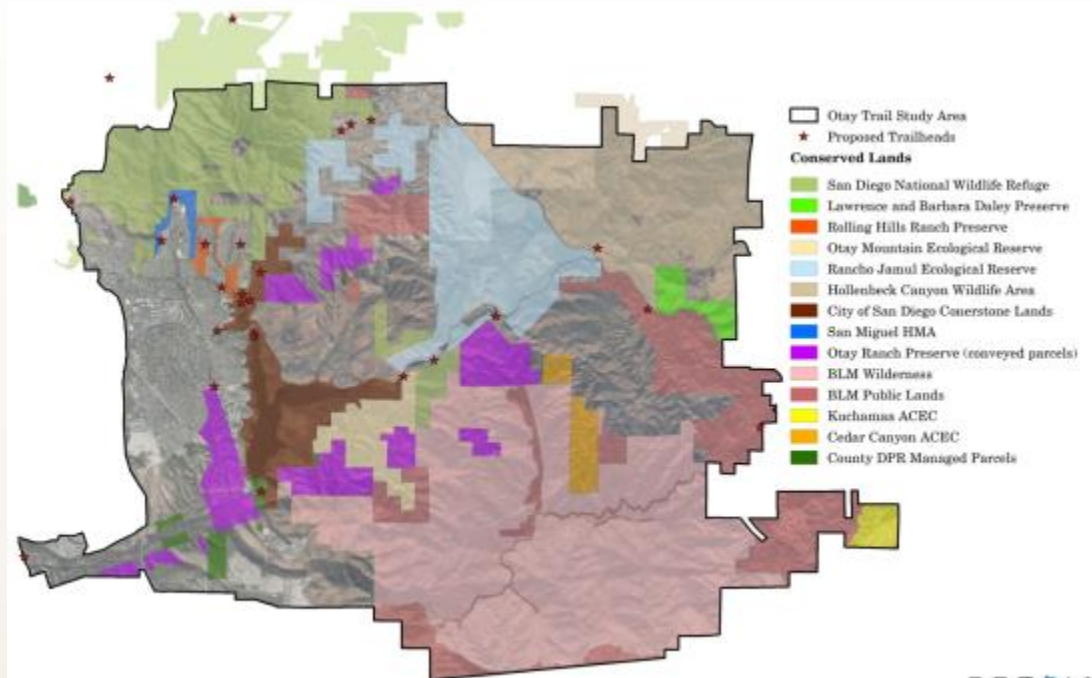
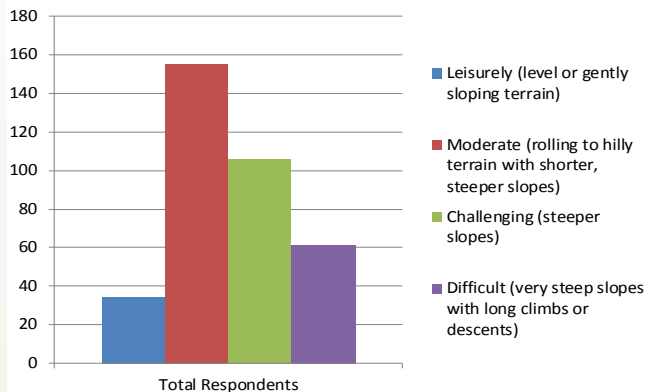


Otay Regional Trail Alignment Study

Trail Planning Process

- ✓ Public Workshop #1 – March 14, 2017
 - 72 attendees
- ✓ Online questionnaire
 - 200 respondents
- ✓ Analyzed trailheads & formulated recommendations based on survey results

What level of difficulty would you prefer for trails in the study area?





Otay Regional Trail Alignment Study

Trail Planning Process

- ✓ Developed siting and design criteria based on existing planning documents
- ✓ Created Resource Avoidance Mapping
- ✓ Analyzed compatibility of alignments with resource objectives

Table 1 Otay Regional Trail Alignment Study Siting & Design Guidelines	
Guideline #	Siting & Design Guideline
1.0	Biological Resources
1.1	Locate trails, view overlooks, and staging areas in the least sensitive areas of the MSCP Preserve.
1.2	Avoid impacts to sensitive plant and wildlife species within MSCP Preserve areas to the maximum extent practicable, with priority given to avoiding breeding habitats for federally and state listed species and narrow endemics.
1.3	Minimize trail widths to reduce impacts to critical habitat and resources. To the maximum extent practicable, do not locate new trails wider than four feet in core MSCP Preserve areas or wildlife corridors.
1.4	Limit equestrian trails near sensitive resources in the MSCP Preserve, such as riparian, wetland, and coastal sage scrub habitats. Where trails are located in the vicinity of sensitive resources, best management practices shall be incorporated into the respective jurisdiction's maintenance plan to reduce potential for invasion by brown-headed cowbirds and water pollution from horse manure.
1.5	Locate equestrian staging areas sufficient distance (e.g., 300 to 500 feet) from riparian and coastal sage scrub habitats in the MSCP Preserve.
1.6	Avoid siting trails in Wolf Canyon.
1.7	The trail design will adhere to the guidelines in the MSCP subarea plans relative to MSCP Preserve adjacency and consider access, non-native species/predators, lighting, runoff/drainage, and noise during trail planning, construction, and operation. This may include (but is not limited to) incorporating signage, physical barriers, visual barriers, and noise reduction measures to reduce detrimental edge effects.
1.8	Trail alignments shall incorporate appropriate buffers from sensitive biological resources inside MSCP Preserve Areas to the maximum extent practicable. Trail alignments will be evaluated in the context of the following buffers: <ul style="list-style-type: none"> • 300 feet from active nesting sites of Cooper's hawk • 900 feet from active nesting sites of northern harriers • 4,000 feet from active nesting sites of golden eagles • 300 feet from occupied burrows of burrowing owls
1.9	All wetlands and vernal pools should be avoided. Riparian areas must be avoided to the maximum extent practicable and crossed perpendicularly to limit detrimental effects (refer to Guideline 2.2). Set-back distances will be evaluated on a case-by-case basis and comply with all applicable regulations.
1.10	Avoid where possible routing trail alignments between habitat ecotones for longer than necessary due to the typically heightened resource sensitivity in those areas.



Otay Regional Trail Alignment Study

Trail Planning Process

- ✓ Established preliminary trail alignments
- ✓ Conducted site visits to alignments
- ✓ Refined alignments based on site analysis





Otay Regional Trail Alignment Study

Trail Planning Process – Next Steps

- ☐ Refine trail system based on public comments & environmental review
- ☐ Write final planning document
- ☐ Conduct environmental review (e.g. CEQA)
- ☐ Implementation is subject to respective land owner/management agency, approvals, and available resources (e.g. funding)





Otay Regional Trail Alignment Study

Pathway vs. Trail



Pathway

- Function as recreation and transportation facilities
- Generally wider (8-12') to accommodate multi-use
- Typically improved surface (e.g. pavement or decomposed granite)



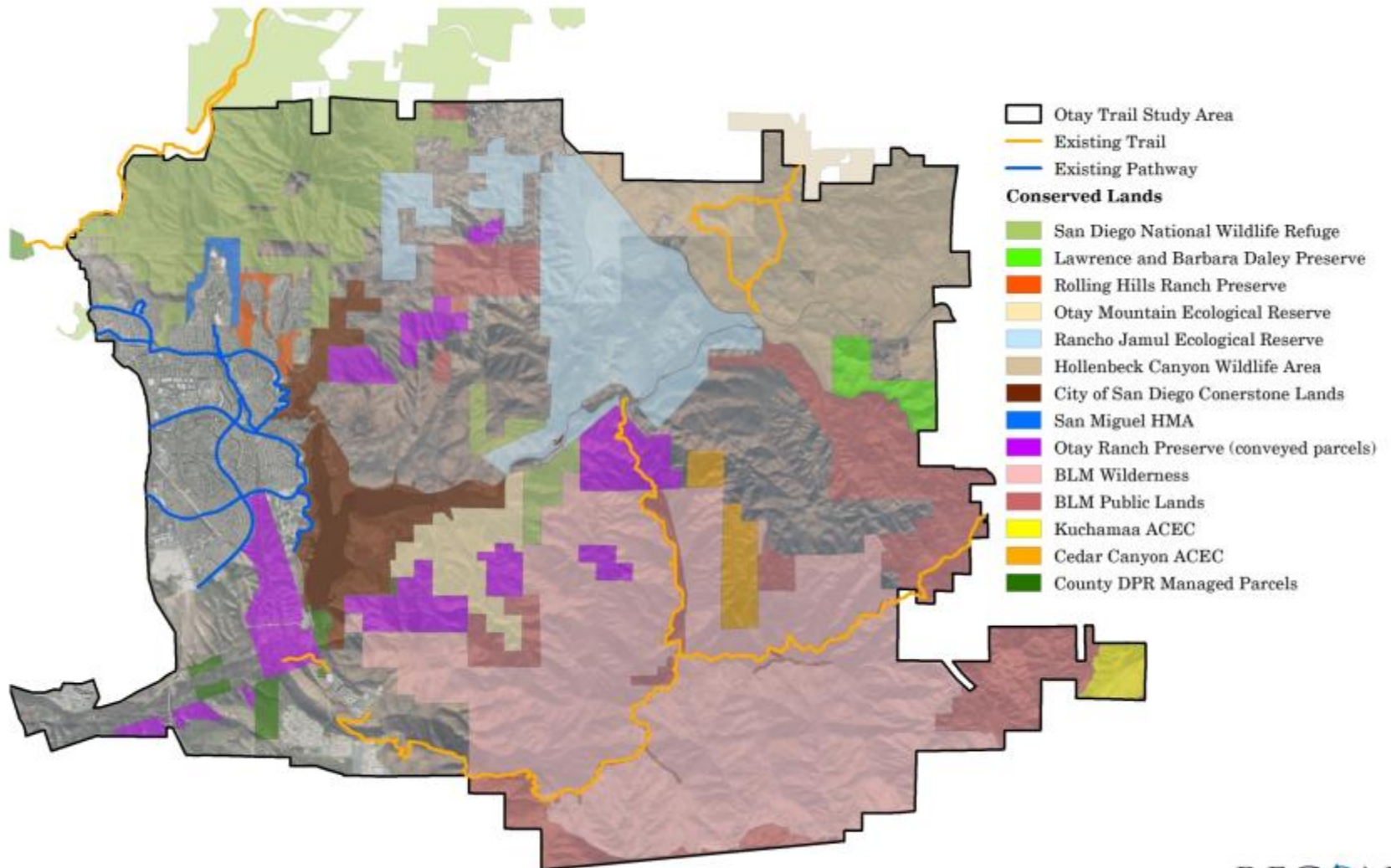
Trail

- Provide nature-based or rural experience
- Generally narrower (2-8')
- Typically natural substrate (e.g. soil)



Otay Regional Trail Alignment Study

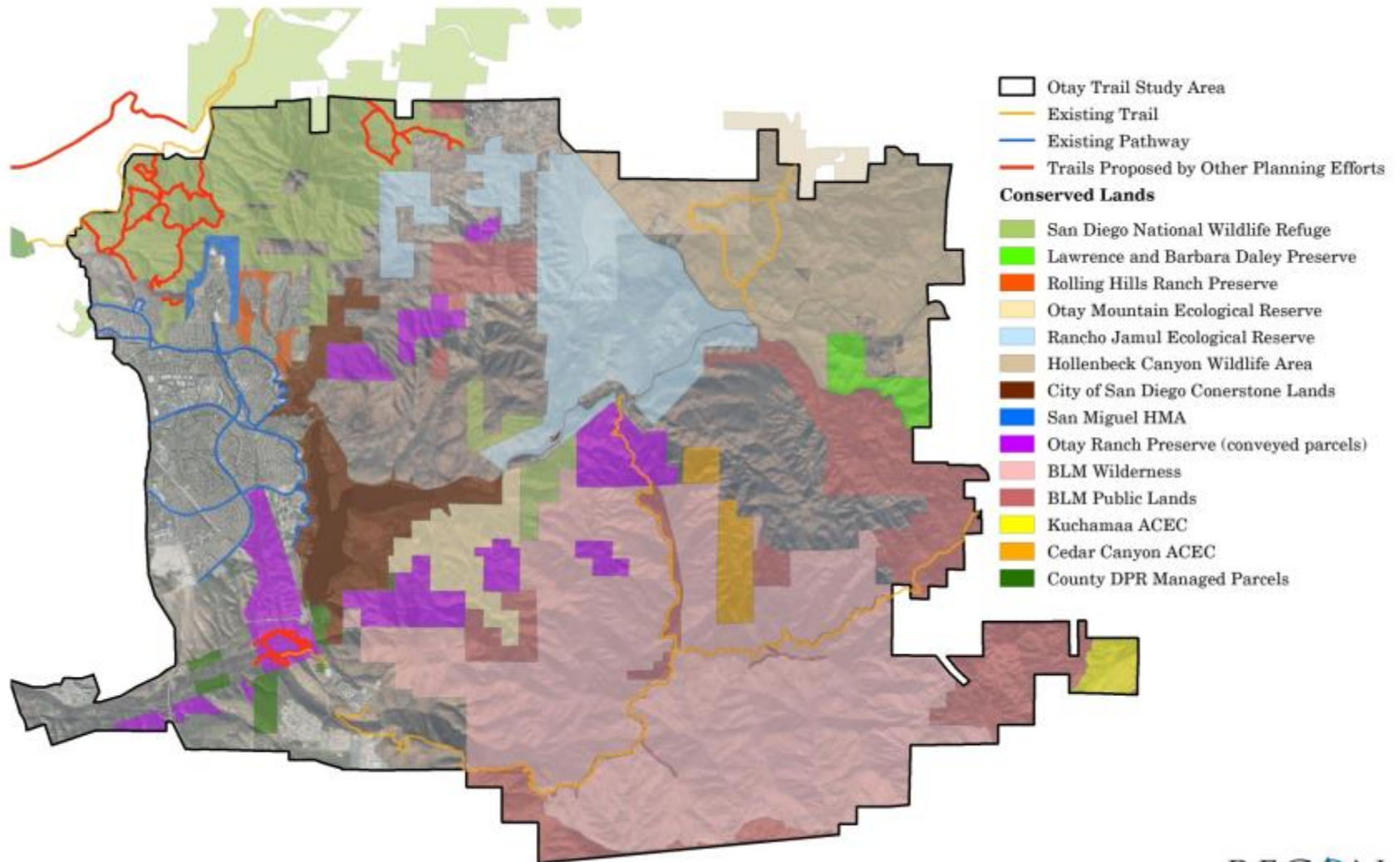
Existing Trails & Pathways





Otay Regional Trail Alignment Study

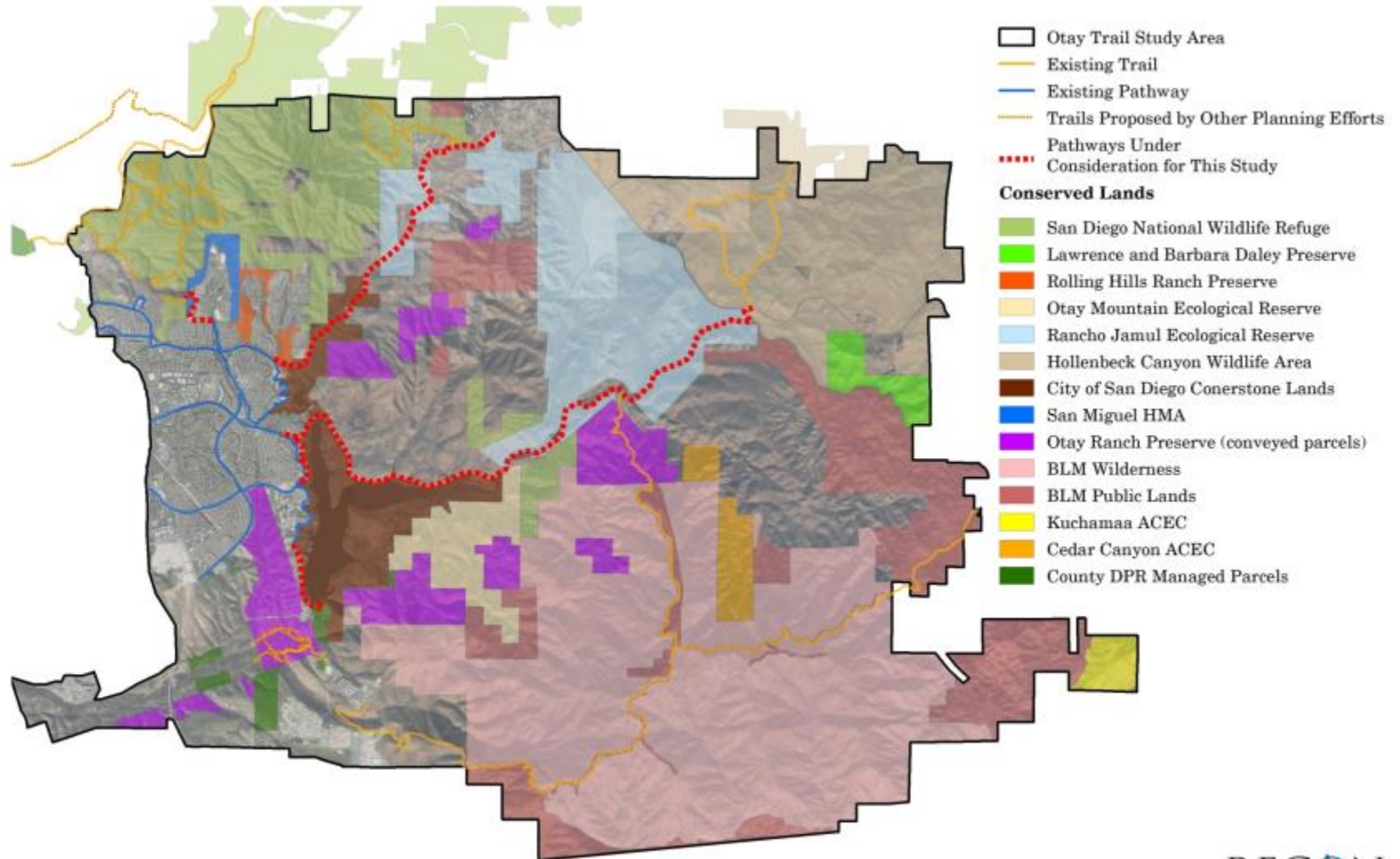
Trails Proposed by Other Efforts





Otay Regional Trail Alignment Study

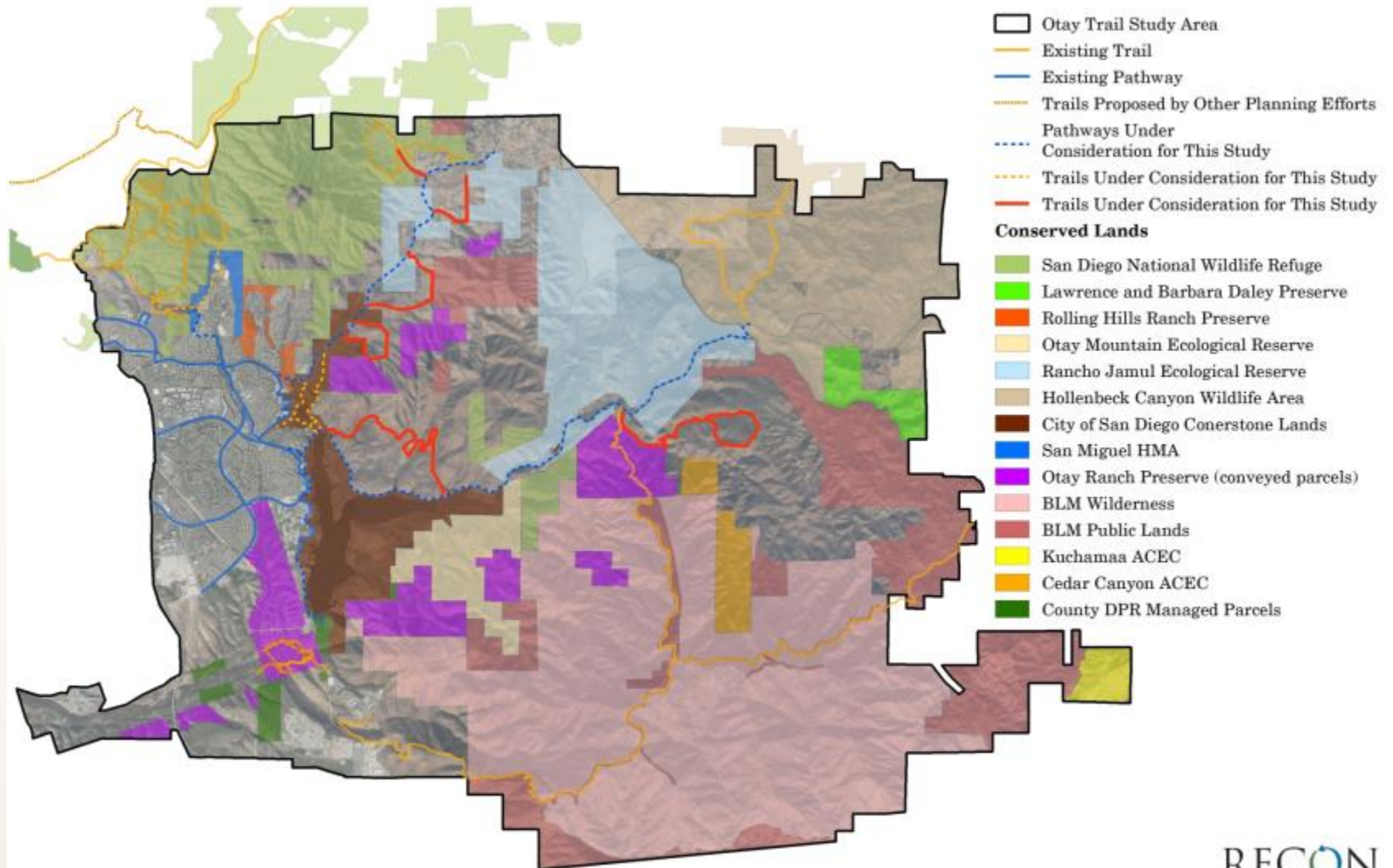
Pathways Under Consideration





Otay Regional Trail Alignment Study

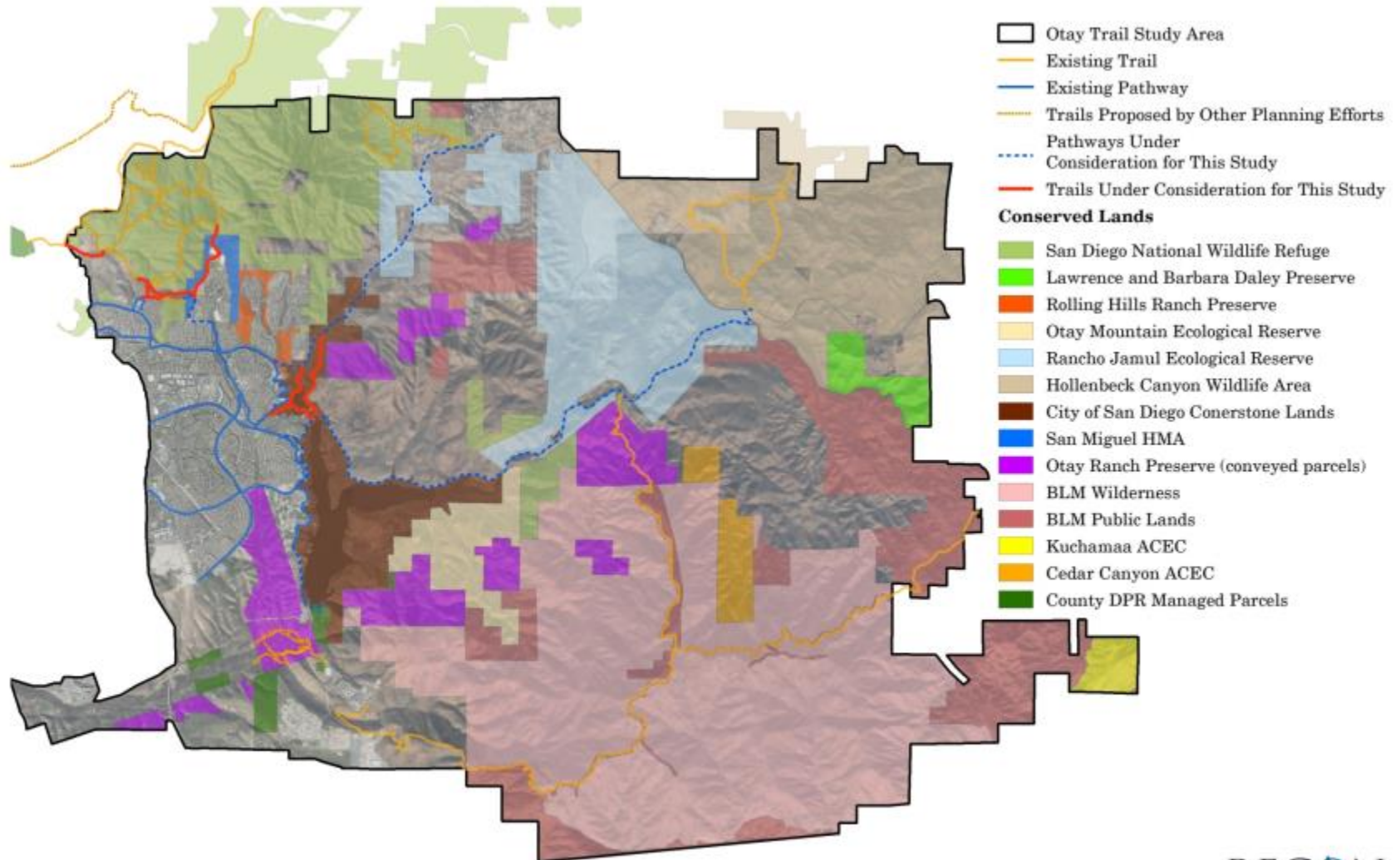
Trails Under Consideration (Otay Ranch)





Otay Regional Trail Alignment Study

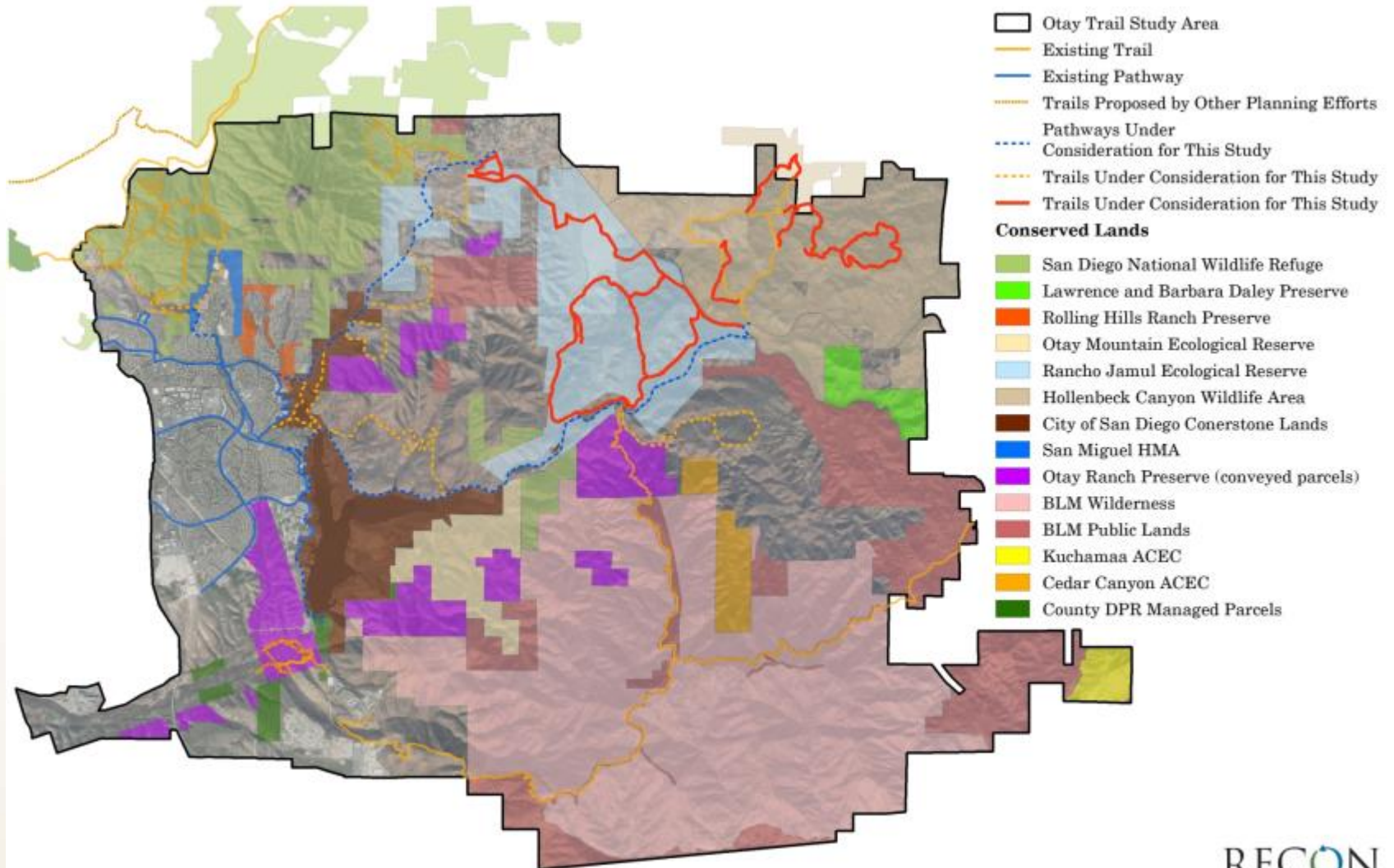
Trails Under Consideration (Eastlake Area)





Otay Regional Trail Alignment Study

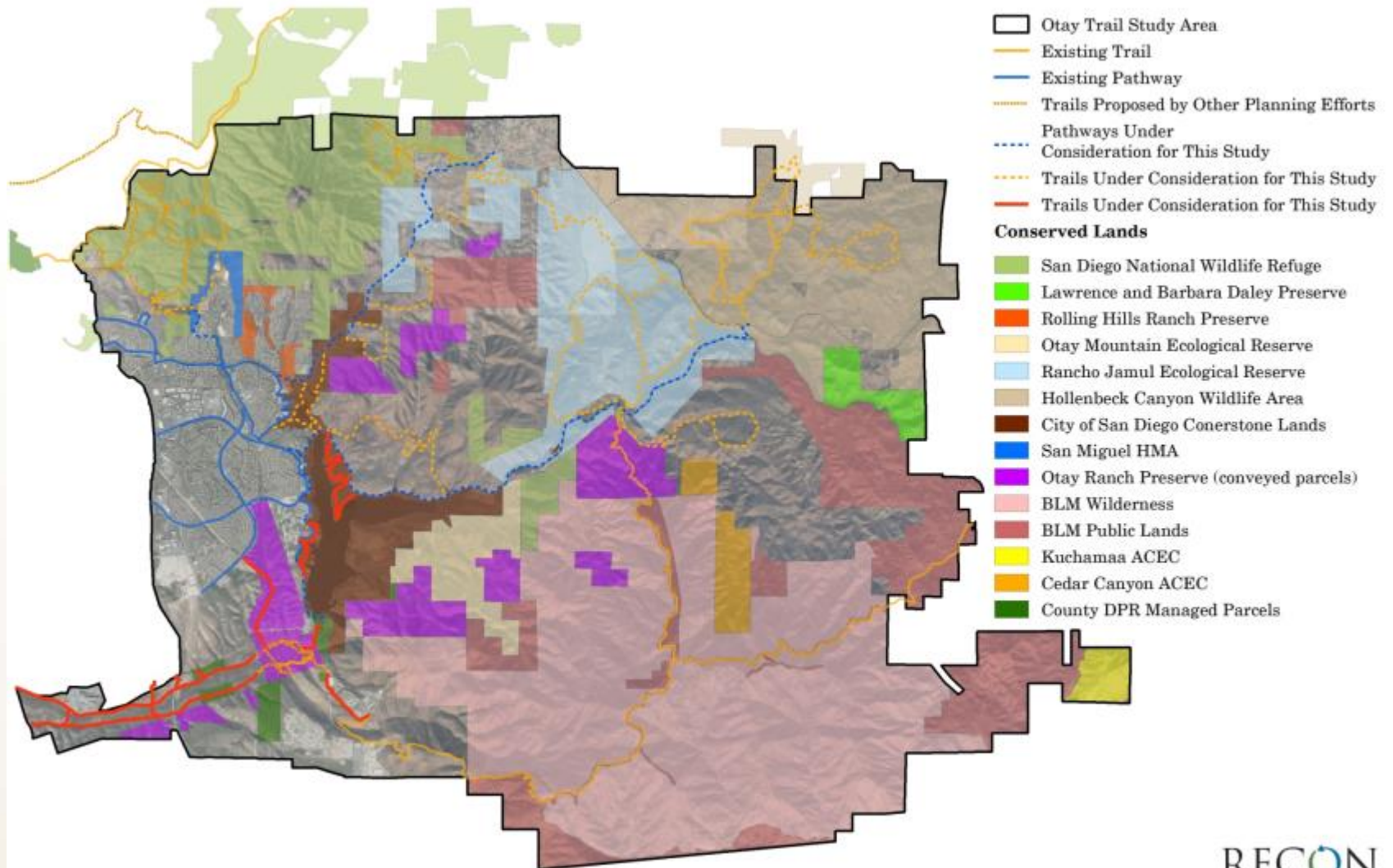
Trails Under Consideration (Jamul Area)





Otay Regional Trail Alignment Study

Trails Under Consideration (Otay Valley)





Otay Regional Trail Alignment Study

Public Workshop Format

Open House

5:30pm to 6:00pm

Sign-in Table

Poster Board Session

Presentation

6:00pm to 6:20pm

Open House

6:20pm to 8:00pm

Stations 1-4: Trail System Stations

Otay-Dulzura Area

Otay Valley Area

Eastlake Area

Jamul Area

Station 5: Interactive GIS Station

Station 6: Multiple Species Conservation Program Station



Otay Regional Trail Alignment Study

Guidelines for Participating at Stations



- Respect Others
- Participate: Be Specific
- Ask Questions
- Give Honest Feedback
- Return Comment Cards to Staff

Tonight's Purpose: Learn about the vision for the trail system and **provide your input** on the trails currently being considered by the study.



An Employee-Owned Company



THANK YOU

Comments may be submitted to
Melanie.Tylke@sdcounty.ca.gov through July 6th.