



Multiple Species Conservation Program South County Subarea Plan 2023 Annual Report

Annual Workshop
November 22, 2024

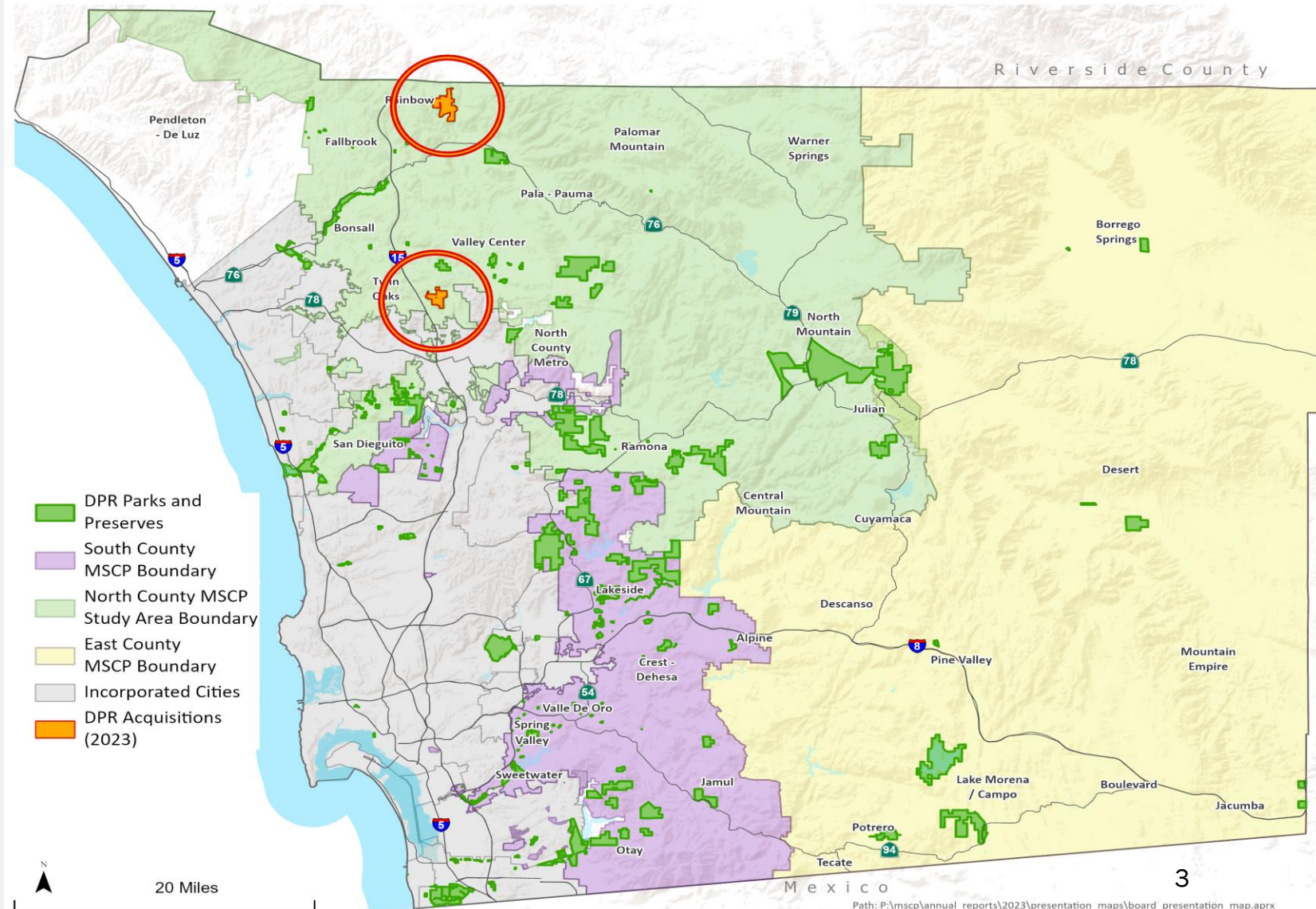
MSCP Implementation

- Acquisition
- Management & Monitoring
- Environmental Education



2023 County Acquisitions

- 46,000 acres of DPR owned preserve lands
- In 2023, DPR acquired 446 acres in the draft North County Plan Area



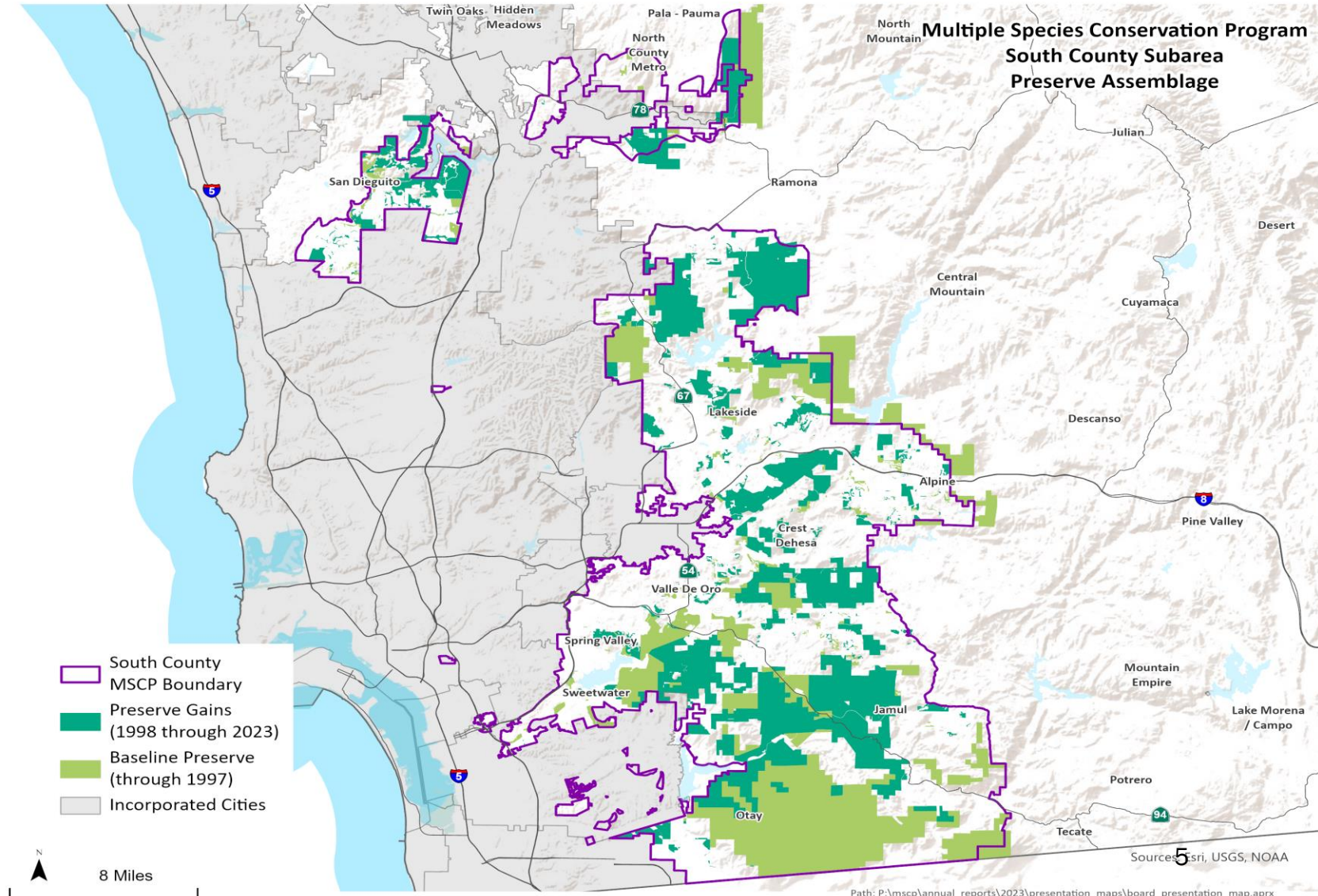
26 Years of County Land Preservation

- **Acquisitions Since 1998: 27,120 acres**
 - 8,480 acres in South County Plan Area
 - 15,820 acres in draft North County Plan Area
 - 2,820 acres in future East County Plan Area
- **43 County Preserves created or expanded**
- **Since 1998, a total of \$235 million has been spent on acquisitions**
 - \$138 million County funds
 - \$97 million from partnering entities and grants



South County Plan Preserve Assembly

- **Preservation Goal:**
98,379 acres
- **Through 2023:**
 - Preserved
80,519 acres
 - 82% of Plan Goal
 - Includes approx.
13,383 acres of
County preserve
lands
 - 411 acres added in
2023



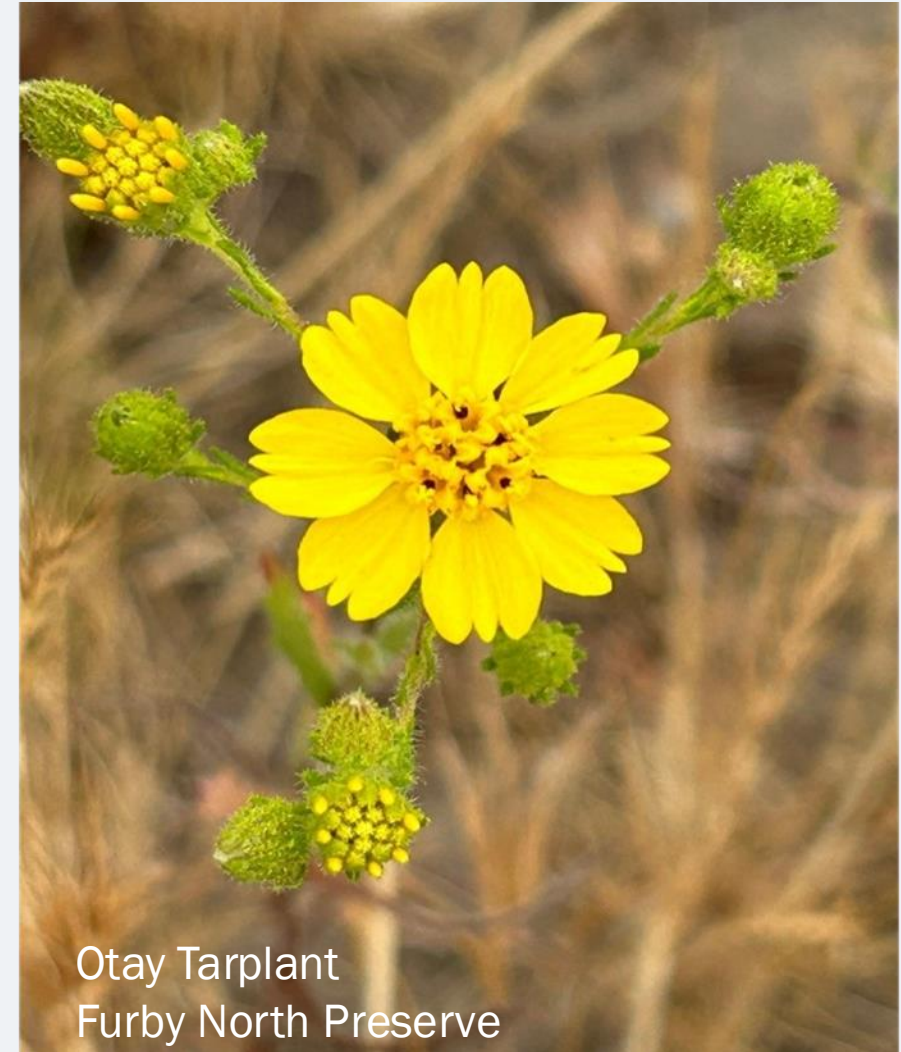
Management & Monitoring Activities

- **Management Activities**
 - Resource Management Plan
 - Land stewardship
- **Monitoring Program**
 - Inventory surveys
 - Targeted Monitoring Plan
 - Regional partnerships



Management & Monitoring Accomplishments

- Land Stewardship
- Habitat Restoration
- Comprehensive Tree Planting
- Monitoring
 - Plant and animal species
 - Special-status species
 - MSCP covered species in South County Plan Area
 - Rare Plant Monitoring



Educational Outreach

- Annually, 23,000 participants
- Environmental Education Programs
 - Ranger-led hikes
 - Hawktober
 - Park-ology
 - Discovery Program
 - Nature Explorers Program



Private Development & Mitigation Lands in South County

- **Private Development Projects**
 - Over 4,400 development permits approved since 1998
 - Permitted in 2023:
 - 62 single-family related projects
- **Private Mitigation Lands**
 - 6,947 acres preserved since 1998
 - 385 acres preserved in 2023



Private Development Resource Management Plans (RMPs)

- **57 Countywide Private RMPs**
 - South – 28 RMPs
 - North – 24 RMPs
 - East – 5 RMPs
- **19 covered species documented**



San Diego ambrosia



Sticky Dudleya



Multiple Species Conservation Program South County Subarea Plan 2023 Annual Report

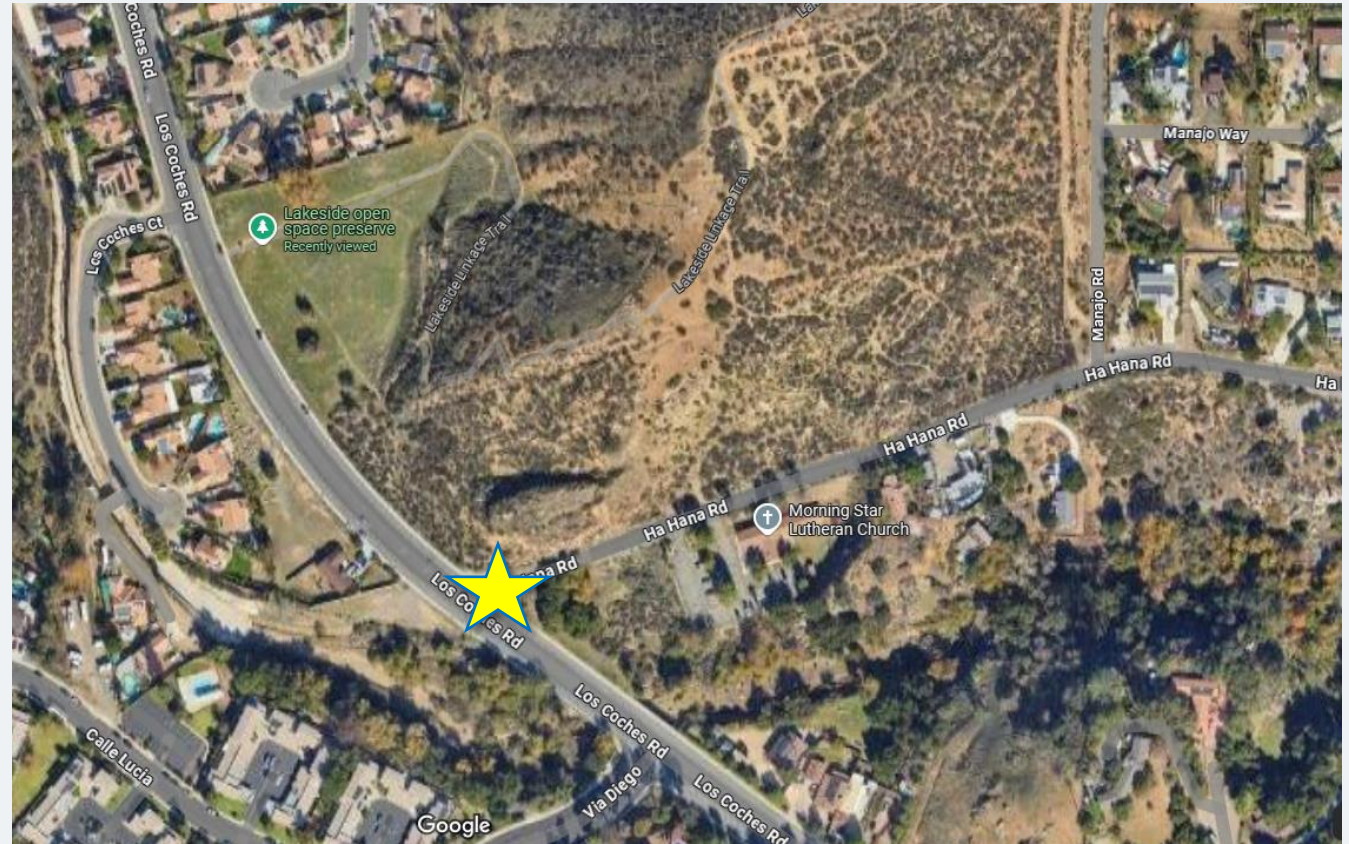
Annual Workshop
November 22, 2024

Site Visit – Lakeside Linkage County Preserve

- **Meeting Time: 1 PM**
- Meeting location: Yellow star on map. Corner of Ha Hana Road and Los Coches Road, Lakeside, CA 92040.
- Coordinates of 32.840581, -116.913991
- <https://maps.app.goo.gl/exRVXAsXBC5eErpD6>

OR

- Google Maps to Lakeside Open Space Preserve on Los Coches Road (9168-9100 Los Coches Rd, Lakeside, CA 92040)
 - will be near meeting location, but will need to walk south on Los Coches Road
- Wear hiking shoes and bring water
- Uphill first part of the hike
- Round trip: ~1.5 miles (in and out trail, not a loop)





City Planning and Parks and Recreation

Multiple Species Conservation Program 2023 Annual Report

MSCP annual workshop
November 22, 2024

2023 Project Loss/Gain

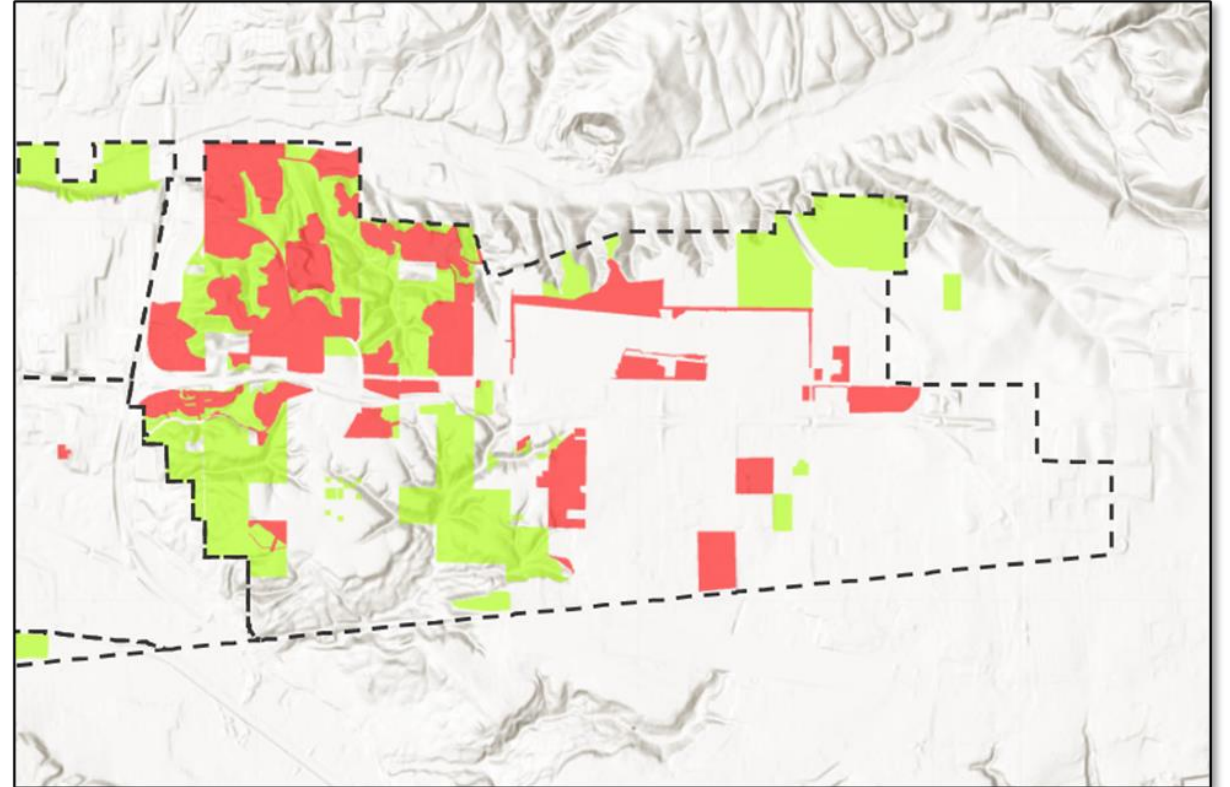
Habitat Gain of 110 Acres

Habitat Gain of 110 acres

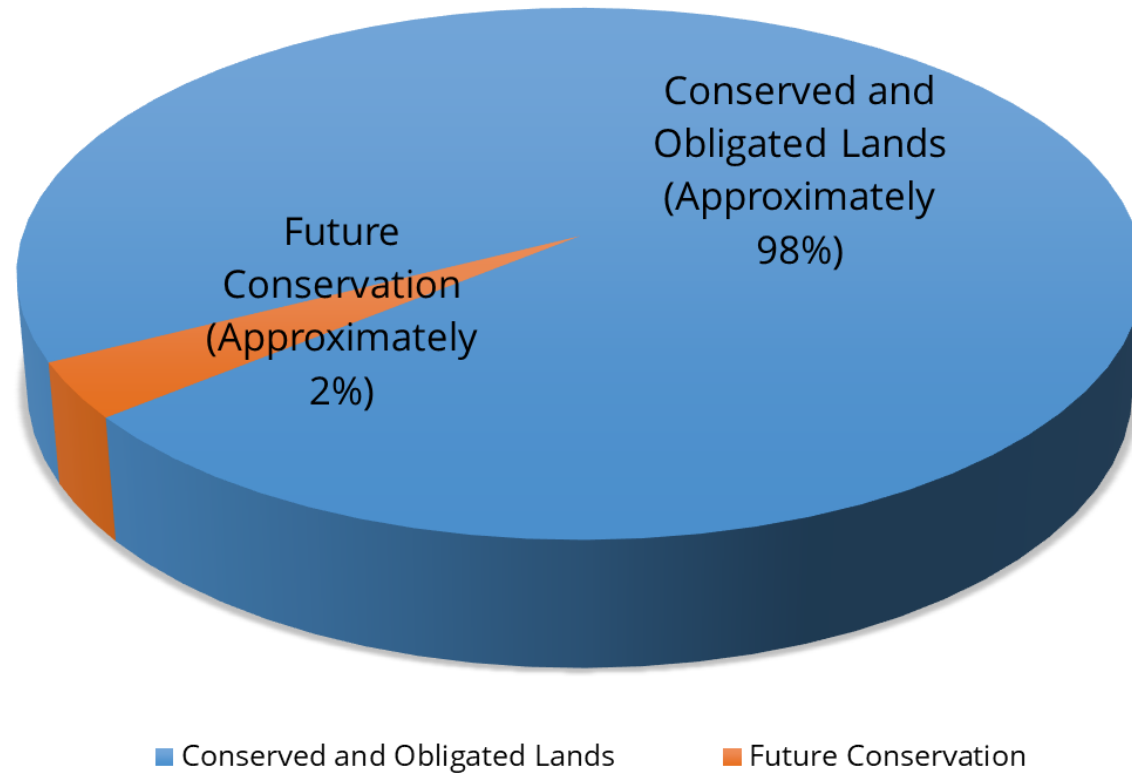
- 66 acres inside the MHPA
- 44 acres outside the MHPA

Habitat Loss

- <1 acre inside the MHPA
- 63 acres outside the MHPA



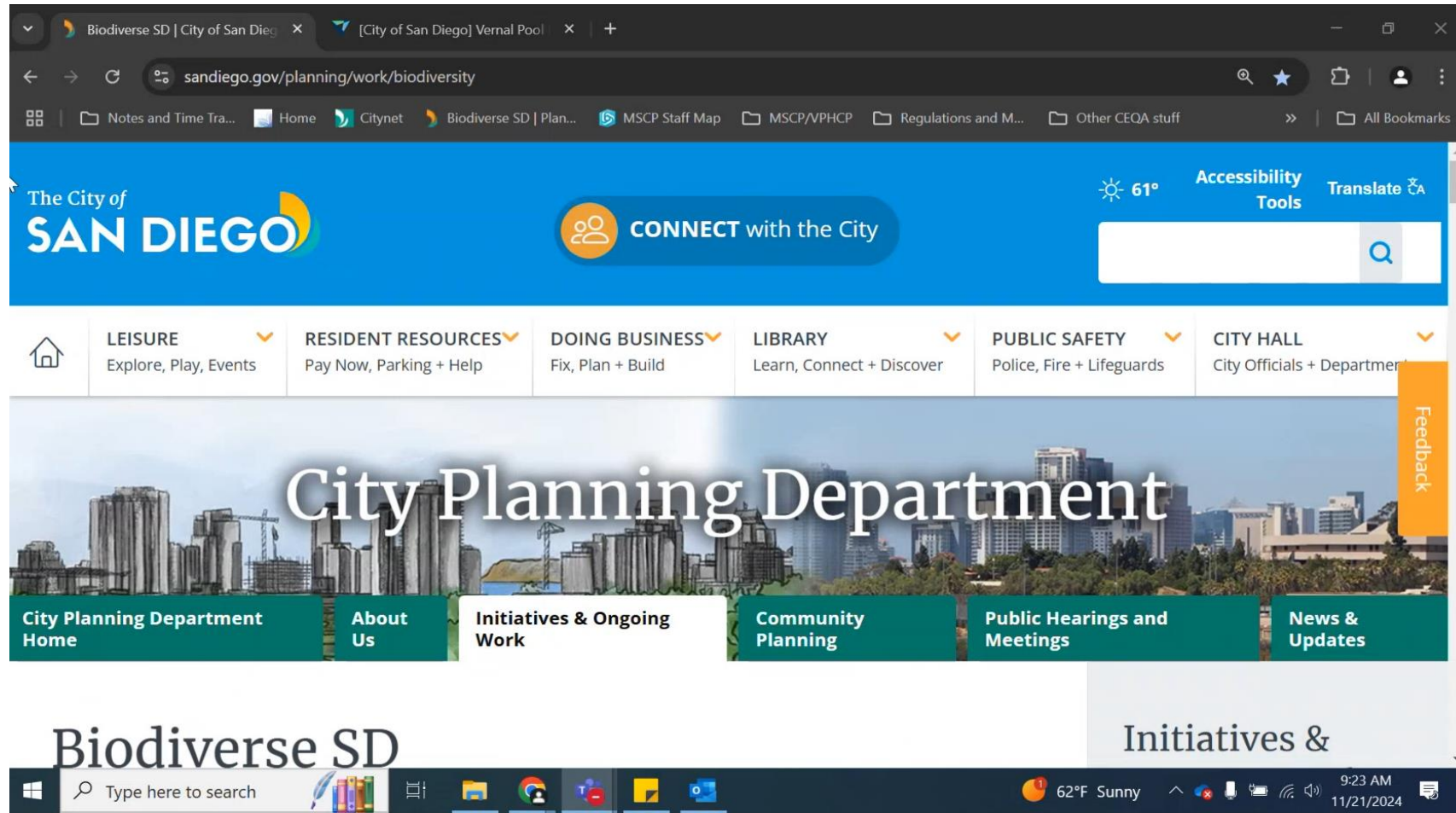
2023 MSCP Conservation Status



Thank you
for saving
my home!

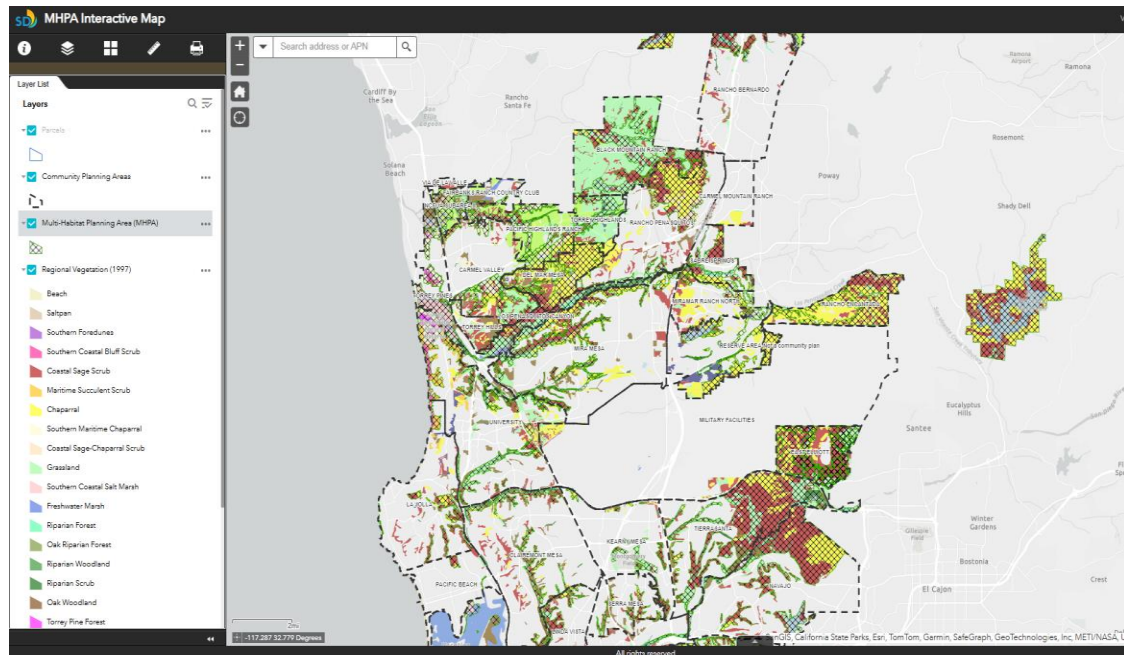


Vernal Pool Private Project Reporting Portal

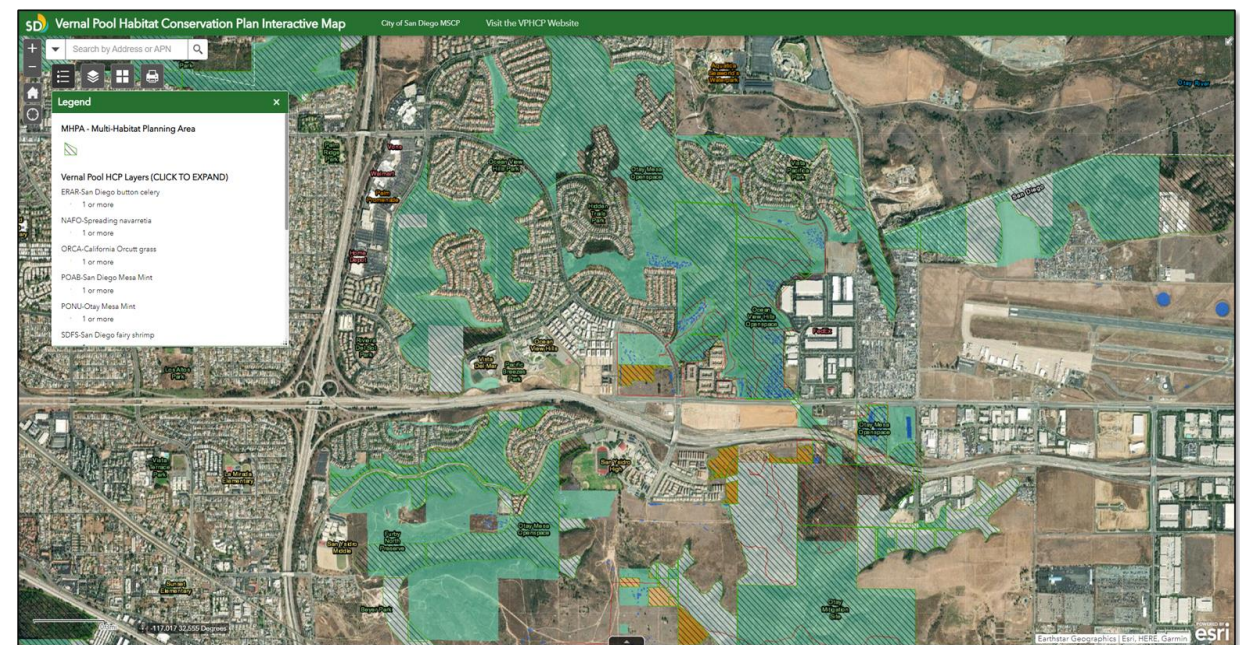


Ongoing GIS updating efforts

MHPA Interactive Map



VPHCP Interactive Map



Recent Acquisitions in MHPA

In 2023 Several Acquisitions were finalized

- Kearny Mesa Logistics Vernal Pool Preserve
- Mast Blvd Parcels (MTRP)
- Attisha Trust (Otay Mesa)



Kearny Mesa Logistics Vernal Pool Preserve

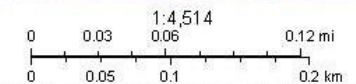


SD Recent Acquisitions in MHPA

- Mast Blvd Parcels (MTRP)



11/21/2024

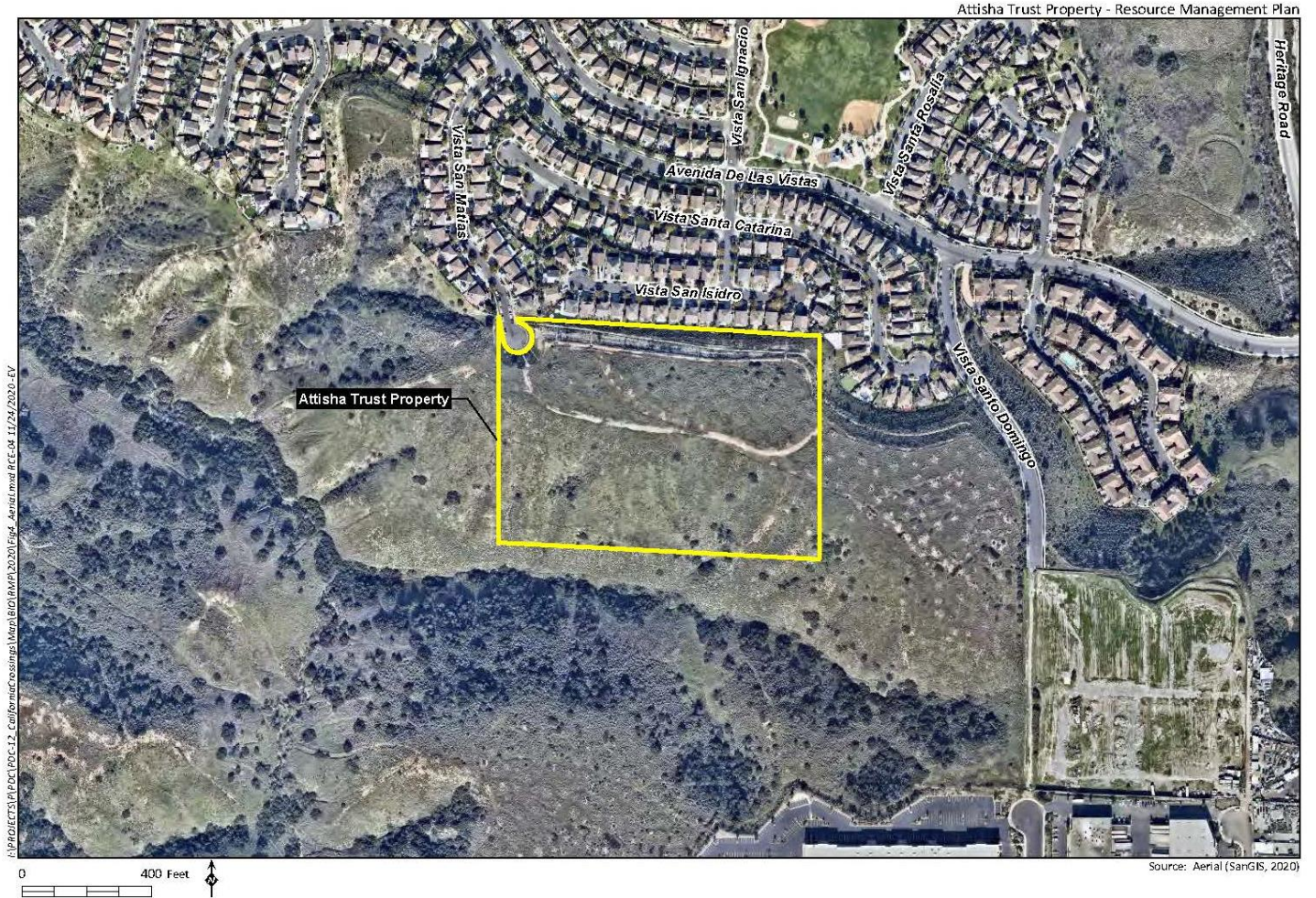
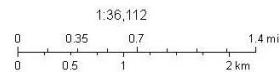


Recent Acquisitions in MHPA

- Attisha Trust (Otay Mesa)

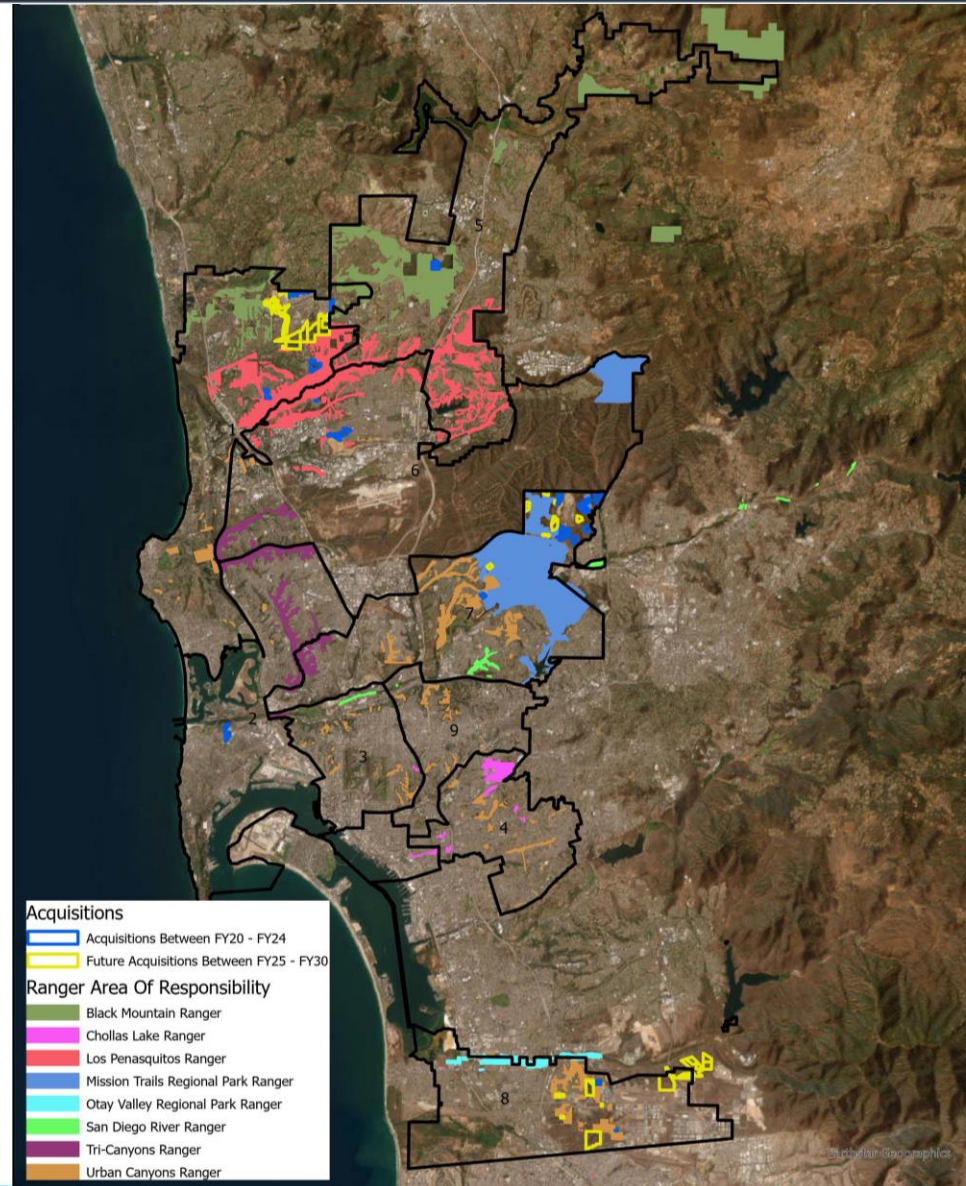


11/21/2024





Map of Recent Acquisitions





Future Acquisitions

FY25 - FY30 ACQUISITION									
30503132	5279744	Tri-Point Homes	Carmel Valley Open Space	N/A	85.3	Carmel Valley	1		
30501246	5381686	Tri-Point Homes	Carmel Valley Open Space	N/A	30.18	Carmel Valley	1		
30503038	5279755	Tri-Point Homes	Carmel Valley Open Space	N/A	10.49	Carmel Valley	1		
30503138	5247182	Tri-Point Homes	Carmel Valley Open Space	N/A	19.46	Carmel Valley	1		
30504020	5326154	State of California DOT	Del Mar Mesa Open Space	N/A	111.6	Deer Canyon	1		
30504039	5279741	State of California DOT	Del Mar Mesa Open Space	N/A	82.03	Deer Canyon	1		
30511301	5208111	Tri-Point Homes	Carmel Valley Open Space	N/A	27.46	Pacific Highlands Ranch	1		
30511302	5369764	PHR Community Assoc	Carmel Valley Open Space	N/A	6.81	Pacific Highlands Ranch	1		
30513148	5216693	Tri-Point Homes	Carmel Valley Open Space	N/A	15.75	Pacific Highlands Ranch	1		
30515024	5226698	Tri-Point Homes	Carmel Valley Open Space	N/A	11.11	Pacific Highlands Ranch	1		
30517202	5361070	Tri-Point Homes	Carmel Valley Open Space	N/A	29.92	Pacific Highlands Ranch	1		
30517203	5239181	Tri-Point Homes	Carmel Valley Open Space	N/A	12.39	Pacific Highlands Ranch	1		
30520020	5247214	Tri-Point Homes	Carmel Valley Open Space	N/A	5.29	Pacific Highlands Ranch	1		
30526401	5326438	Tri-Point Homes	Del Mar Mesa Open Space	N/A	125.59	Pacific Highlands Ranch	1		
30532648	5360822	Tri-Point Homes	Carmel Valley Open Space	N/A	26.41	Pacific Highlands Ranch	1		
30533246	5360220	Tri-Point Homes	Black Mountain Open Space	N/A	23.22	Pacific Highlands Ranch	1		
30801003	5301859	Pardee Construction	Del Mar Mesa Open Space	N/A	85.96	Carmel Valley Neighborhood 10	1	708.97	CD1
36602108	721683	Private	Mission Trails Regional Park	N/A	13.9	East Elliot from Whalen via Fanita Ranch	7		
36602109	721685	Private	Mission Trails Regional Park	N/A	12.3	East Elliot from Whalen via Fanita Ranch	7		
36603027	723942	Private	Mission Trails Regional Park	N/A	12	East Elliot - James Trust	7		
36603115	723962	Private	Mission Trails Regional Park	N/A	9.05	East Elliot - Johnson	7		
36607031	740639	Private	Mission Trails Regional Park	N/A	36.1	East Elliot from the Foundation	7		
36607032	740647	Private	Mission Trails Regional Park	N/A	16	East Elliot from the Foundation	7		
36607134	740616	Private	Mission Trails Regional Park	N/A	5.5	East Elliot Callahan Trust	7		
36608020	719896	Private	Mission Trails Regional Park	N/A	18	East Elliot Head Quarters Point	7		
37101015		SD County Water Authority	Mission Trails Regional Park	N/A	2.2	SD County Water Authority: VP Mitigation Pro	7	125.05	CD7
64504018	16780	San Ysidro School District	Otay Mesa Open Space	N/A	6.8	San Ysidro gnatcatcher preserve	8		
64504021	16786	Tri-Point Homes	Otay Mesa Open Space	N/A	3	Tri-Point	8		
64504023	16784	Del Sol Village	Otay Mesa Open Space	N/A	4.9	Del Sol Villages	8		
64506111	5297315	State of California	Otay Mesa Open Space	N/A	5.3	Otay Mesa B	8		
64509050	5281650	State of California	Otay Mesa Open Space	N/A	2.4	Cal Trans - Handler	8		
66704013	15681	Tri-Point Homes	Otay Mesa Open Space	N/A	159	South West Village 5+ years	8		
Multiple APN			Otay Mesa Open Space	N/A	67	4 years E&CP mitigation	8		
Multiple APN		Cal Trans	Otay Mesa Open Space	N/A	200	State Cal Trans for 125 Mitigation	8		
Multiple APN		Tri-Point Homes	Otay Mesa Open Space	N/A	5	Otay Mesa 1 acre each from Tri-point	8		
No APN yet		Cal Trans	Otay Mesa Open Space	N/A	80	Dennery Canyon from Cal Trans	8	533.4	CD8
Total Acres Projected for FY25-FY30					1367.42			1367.42	

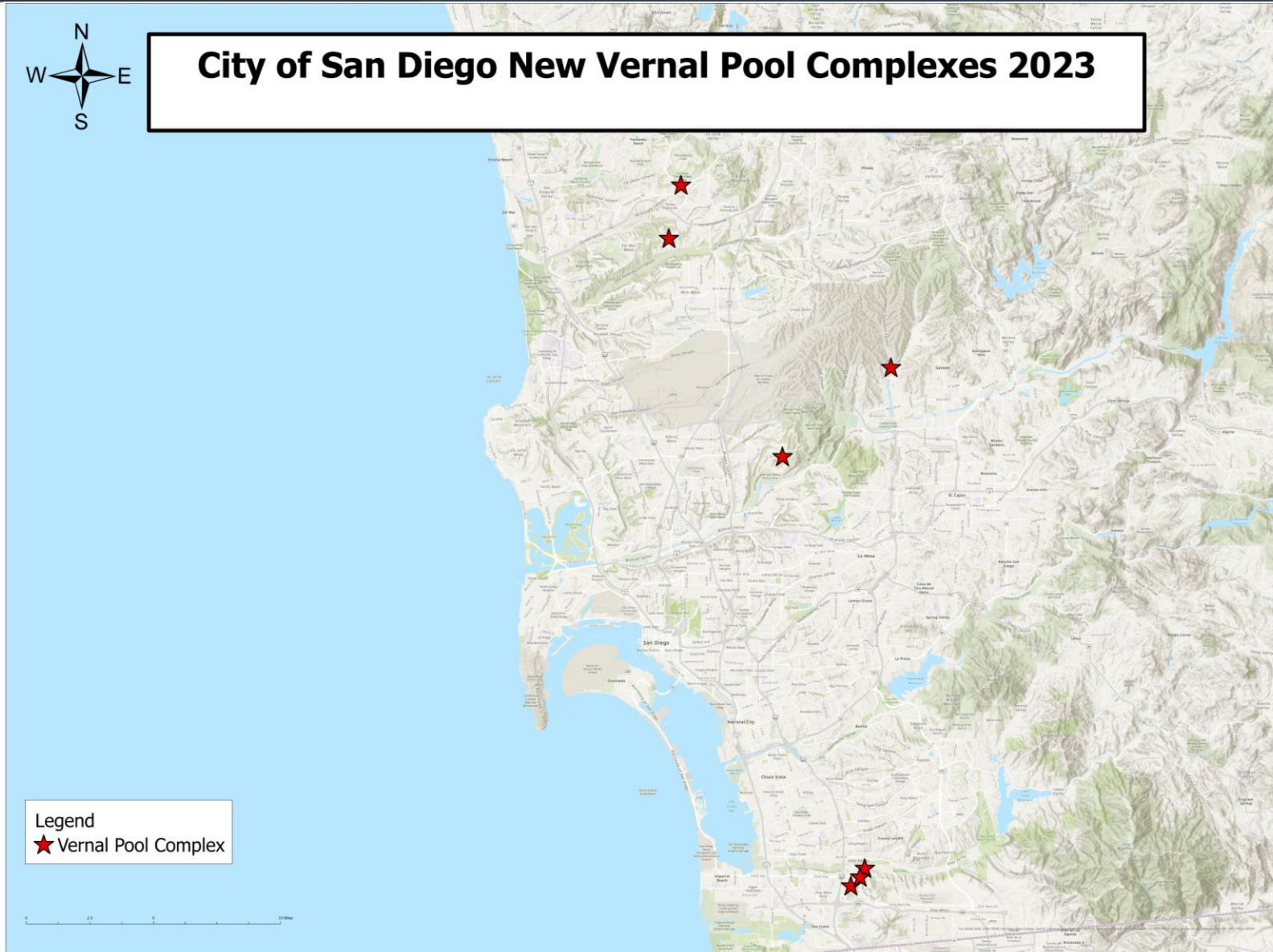
SD New Vernal Pool Complex Additions

- Fairbanks Highlands
- Dormouse
- Stowe
- Calle de Vida West
- Ocean Hills Parkway
- Topsail
- Seabird Way



Vernal Pool Biologists sampling conducting wet season sampling

SD New Vernal Pool Complex Maps



Looking Forward

Ongoing projects for next year's report

- SANDAG Grant Projects:
 - Otay Mesa and Wruck Canyon Restoration
 - Dennery Canyon Restoration
 - Mission Trails Regional Park : SD Thornmint Enhancement and Restoration (Mission Trails Regional Park Foundation)
 - Ocean Beach Estuary Enhancement Project (SD River Park Foundation; 2nd Phase)
 - Famosa Slough Revised Enhancement Plan (Friends of Famosa Slough)
- Other Grant Funded Projects
 - Robinhood Ridge (City of San Diego / Wildlife Conservation Board Grant)
 - Ocean Beach Estuary Enhancement Project (SD Bird Alliance/ Dorrance Family Foundation, 1st Phase)
 - San Diego River I-5 Island Encampment Removal
 - Mission Trails Regional Park Foundations Wildfire Abatement and Invasive Species Removal
 - Continued Acquisitions in East Elliot and Otay Mesa





Thank You

- Biodiverse SD Webpage: <https://www.sandiego.gov/planning/work/biodiversity>
- 2023 MSCP Annual Report: <https://www.sandiego.gov/planning/work/biodiversity#>
- MSCP Covered Species - Flora & Fauna: <https://webmaps.sandiego.gov/portal/apps/storymaps/collections/7fd42ba9d0064413993afff1f42b79e1>
- MHPA Interactive Mapping Tool: <https://sandiego.maps.arcgis.com/apps/webappviewer/index.html?id=11930ddbbfcb4335970ebe254c4e0c12>
- VPHCP Interactive Mapping Tool: <https://sandiego.maps.arcgis.com/apps/webappviewer/index.html?id=7cfd12d64af8424b986af45712933b88>

MSCP Annual Workshop

November 22, 2024



CV MSCP Subarea Plan



Presentation

- Chula Vista MSCP Subarea Plan
 - Overview
 - 2023 Report Status
- Management/Monitoring Update
 - Otay Ranch Preserve



CV MSCP Subarea Plan



Chula Vista MSCP Subarea Plan Goals:

- To conserve Covered Species and their habitats
- To secure interconnected significant habitat cores and linkages
- To provide long-term management and monitoring



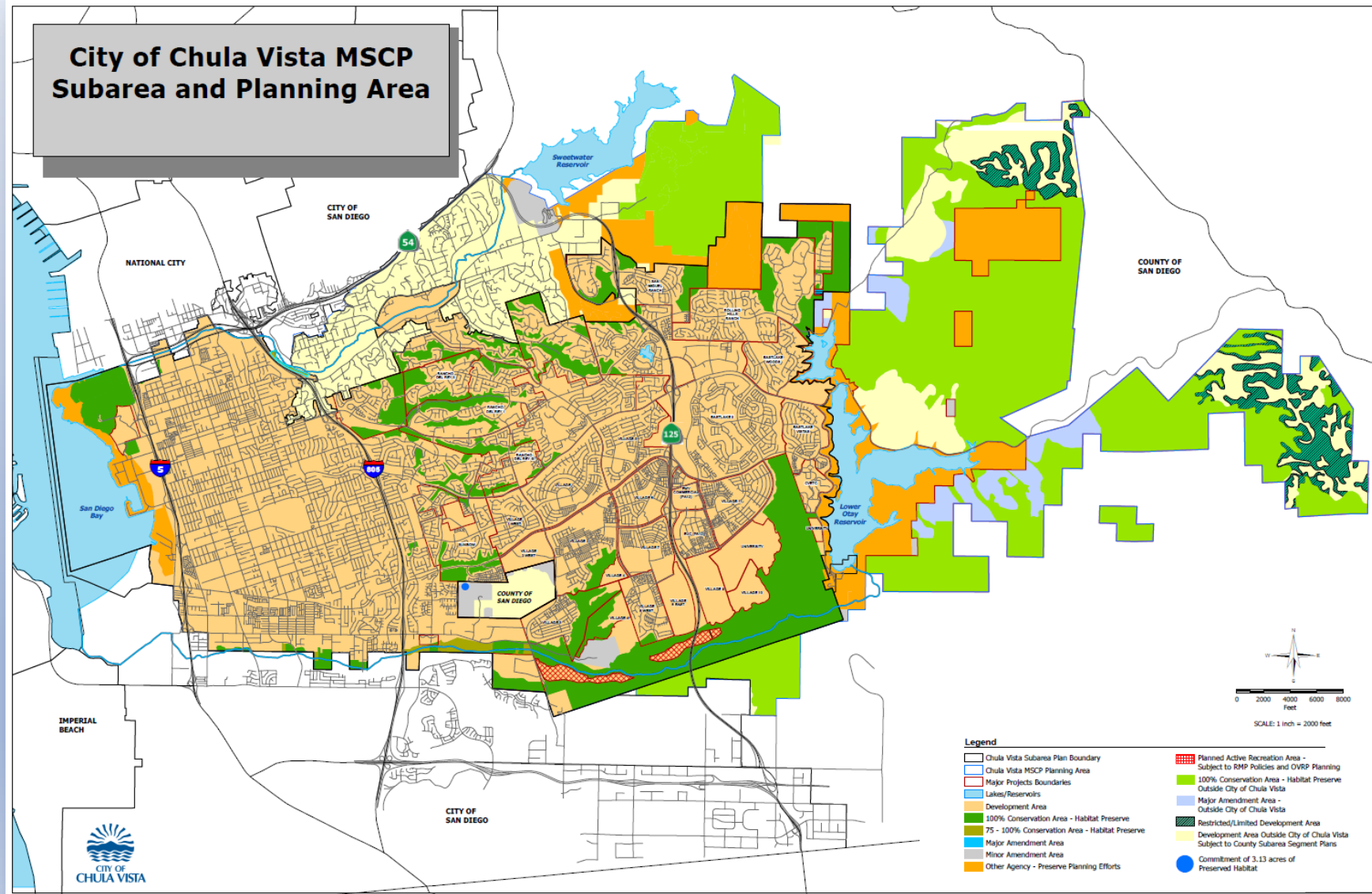
CV MSCP Subarea Plan



- Subarea Plan Approved: February 2003
- Take Permit and IA: January 2005
- 86 Covered Species – Quino coverage
- 99% Hard-line Preserve
- Conservation Estimate: 9,243 acres
 - 4,993 acres within CV Subarea
 - 4,250 acres *outside* CV Subarea
- Community Facilities District (CFD) Funds for Management & Monitoring



CV MSCP Subarea Plan



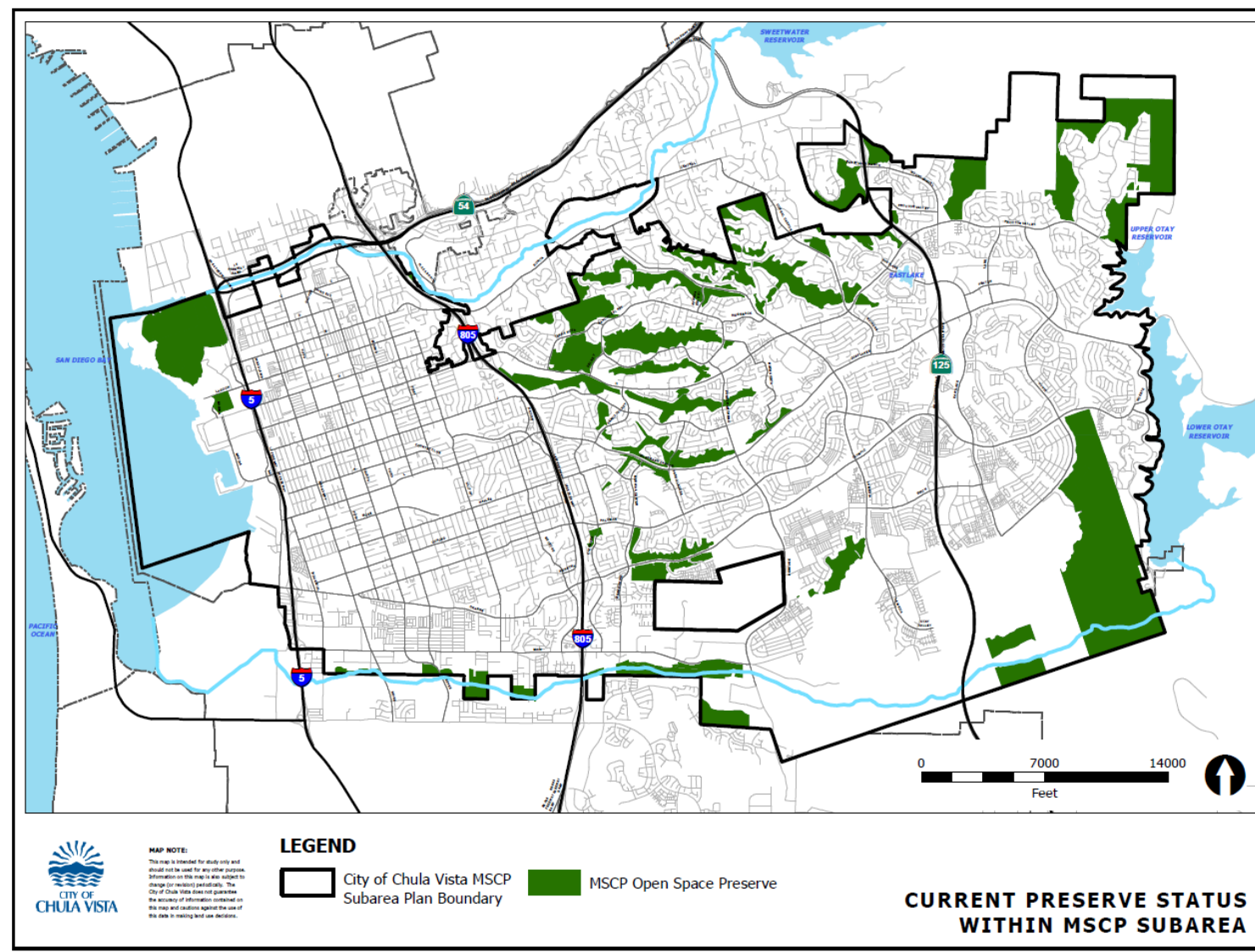
2023 Conservation Status



	CV Subarea Plan Conservation Goal (acres)	2023 Status (acres)	Assemblage Percentage Complete
Gains within CV Subarea Plan	4,993	4,135	82%
Gains outside CV Subarea Plan	4,250	3,576	84%
Overall Contribution	9,243	7,711	83%

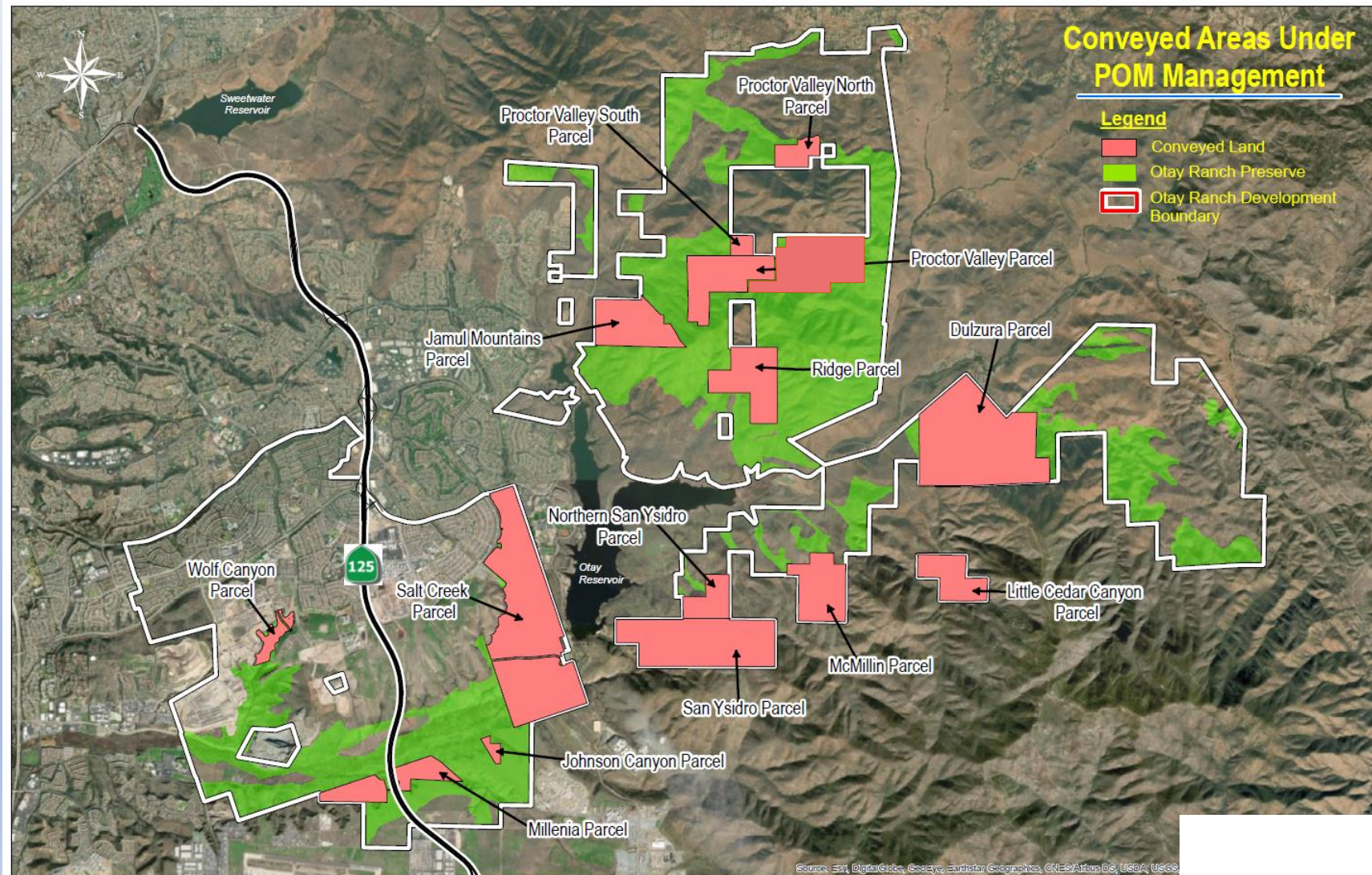


2023 Conservation Status within CV Subarea Plan



2023 Otay Ranch Preserve

(majority of Conservation outside CV Subarea Plan)



Otay Ranch Preserve



- 11,000+ acre Otay Ranch Preserve
- Assembled and managed by CV and County
 - Preserve Owner/Manager (POM)
- Funding: Community Facilities District (tax levy)
- ~4,000+ acres under POM management



Otay Ranch Preserve



2023 Monitoring / Management Activities

Monitoring

- Baseline Surveys
- Least Bell's Vireo and Yellow-billed Cuckoo Surveys
- Rare Plant Surveys
- Fairy Shrimp Surveys
- Vernal Pool Plant Surveys
- Database Contributions

Management

- Routine Site Visits
- Litter Removal
- Access Control
 - Gate, Fence, and Sign Repairs
- Invasive Species Treatment





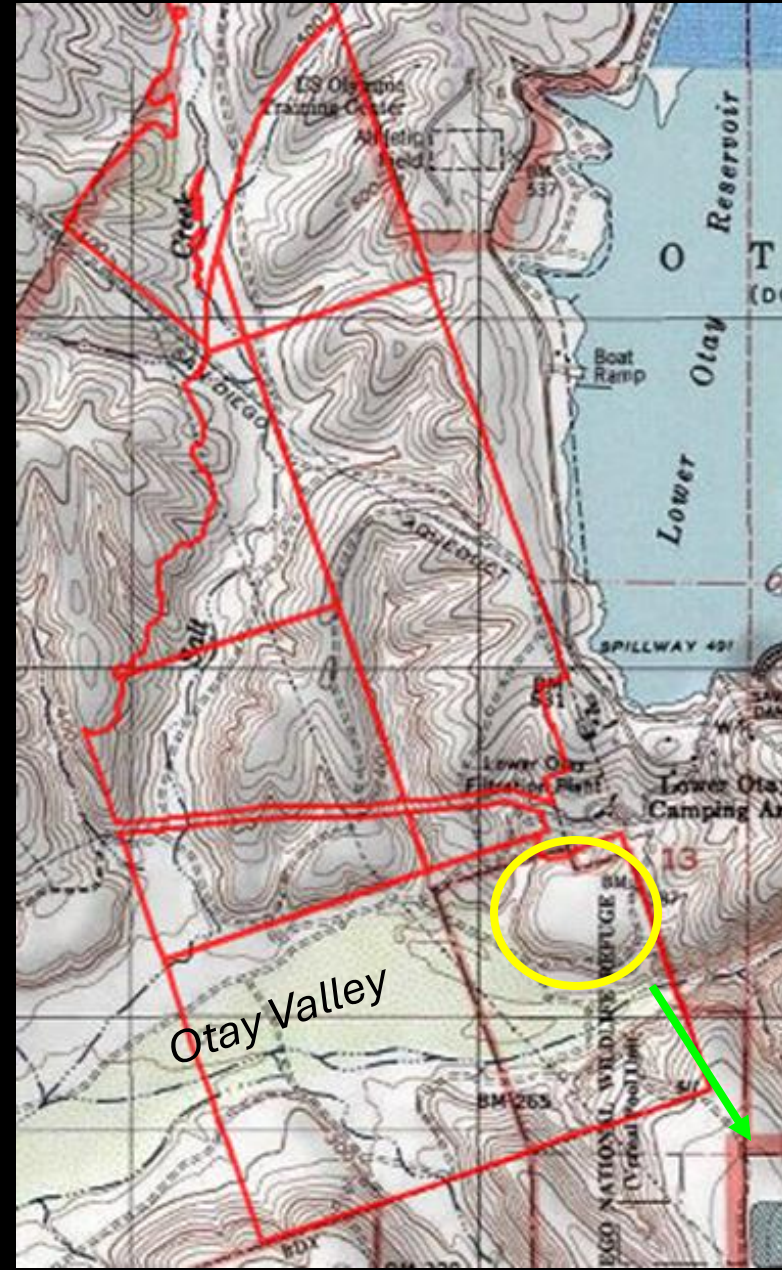
Otay Ranch Preserve

Conveyed Lands

- Preserve Owner Manager (POM):
City of Chula Vista &
County of San Diego
- 4,373 acres in 2023
- Ultimately 11,375 acres
- Framework Management Plan:
Otay Ranch Resource Management Plan
(RMP Phase 1 and Phase 2
[Updated 2018])

QCB Recovery & A Holistic Approach to Habitat Restoration

- Quino Checker Spot Butterfly (QCB)
 - Federally Endangered, City of Chula Vista MSCP-covered
- Weed Treatment – 2014 to Present
- QCB Focused Surveys
- QCB Host and Nectar Plant Seed Bulking
- Vernal Pool Establishment
- Fairy Shrimp Focused Surveys
- Vernal Pool Plant Seed Collection/Distribution

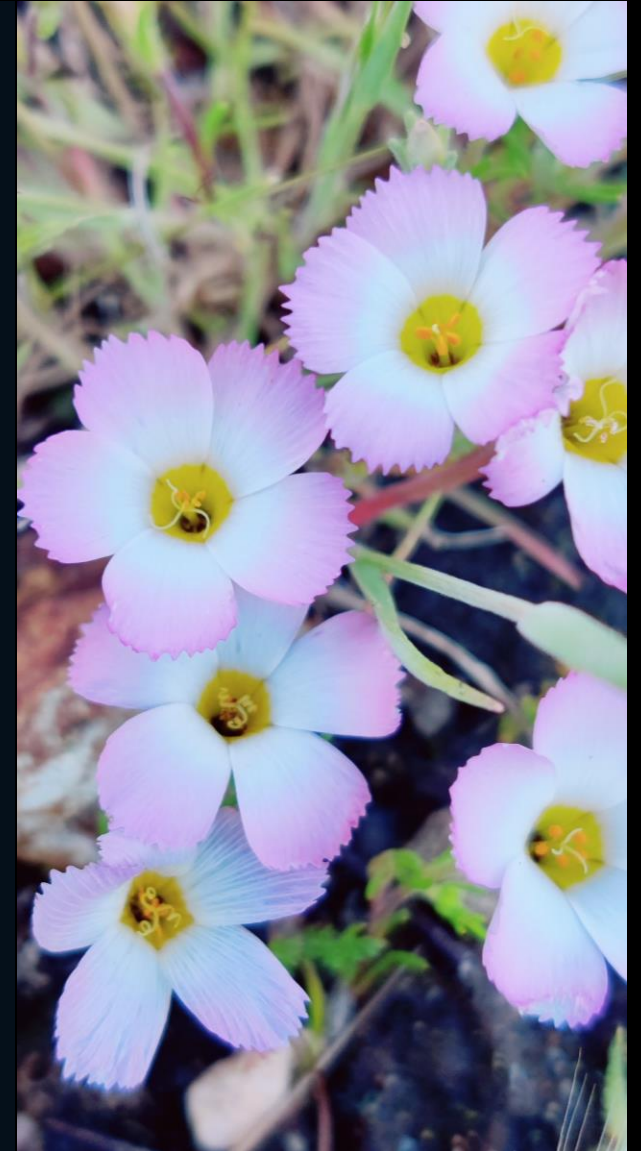


<0.5 mile from larger QCB population



Quino Checkerspot Butterfly & Vernal Pools

- Historically, QCB abundant on Otay Mesa in vernal pool habitat.
- Mesa supports mima mound topography
- September 2015 - 30 vernal pools established
- Vernal pools established to enhance quality of QCB habitat



QCB Recovery & A Holistic Approach to Habitat Restoration



April 2015 - Prior to Establishing Pools

September 2015
30 vern. pools est.



March 2016 – After Establishing Pools

QCB Recovery & A Holistic Approach to Habitat Restoration



February 2024 – Wet Season



October 2024 – Dry Season

Fairy Shrimp Methods

- Surveys followed U.S. Fish and Wildlife Service (USFWS) guidelines
- 30 vernal pools
 - 1st survey winter 2019
 - 2nd survey winter 2023



2023 Fairy Shrimp Results

- San Diego fairy shrimp (*Branchinecta sandiegonensis*)
 - Federally endangered, MSCP-covered
 - 2023 results: 17 of the 30 pools
 - 2019 results: 8 of the 30 pools
 - Increase of 9 pools
- Versatile fairy shrimp (*Branchinecta lindahli*) and San Diego fairy shrimp co-occur
 - 2023 results: 1 pool
 - 2019 results: 0 of the 30 pools
 - Increase of 1 pool
- Western spadefoot (*Spea hammondi*)
 - Federally proposed threatened, California Department of Fish and Wildlife species of special concern
 - 2023: 28 of the 30 pools
 - 2019 results: 6 of the 30 pools
 - Increase of 22 pools



2023 Fairy Shrimp Results

- 17 pools - San Diego Fairy Shrimp
- 1 pool - Versatile Fairy Shrimp & San Diego Fairy Shrimp
- 2 pools - Immature Branchinecta
- 2 pools ponded - No Fairy Shrimp or Western Spadefoot
- 28 pools - Western Spadefoot





California bumble bee (*Bombus californicus*) visiting Otay mesa mint

Vernal Pool Plant Seed Collection & Dispersal

- No vernal pool (VP) plant species prior to establishing vernal pools
- Spring 2015, non-listed VP plant seed collected & distributed in select pools
 - Dwarf woollyheads (*Psilocarphus brevissimus*)
 - Prairie plantain (*Plantago elongata*)
- 2019, Right of Entry permit authorized by the City of San Diego for Cal Terraces VP Preserve seed collection
- Fall 2020 and 2021, seeds distributed into select pools
 - Otay mesa mint (*Pogogyne nudiuscula*)
 - Federally Endangered, State Endangered, MSCP-covered
 - San Diego button-celery (*Eryngium aristulatum* var. *parishii*)
 - Federally Endangered, State Endangered, MSCP-covered
 - Orcutt grass (*Orcuttia californica*)
 - Federally Endangered, State Endangered, MSCP-covered



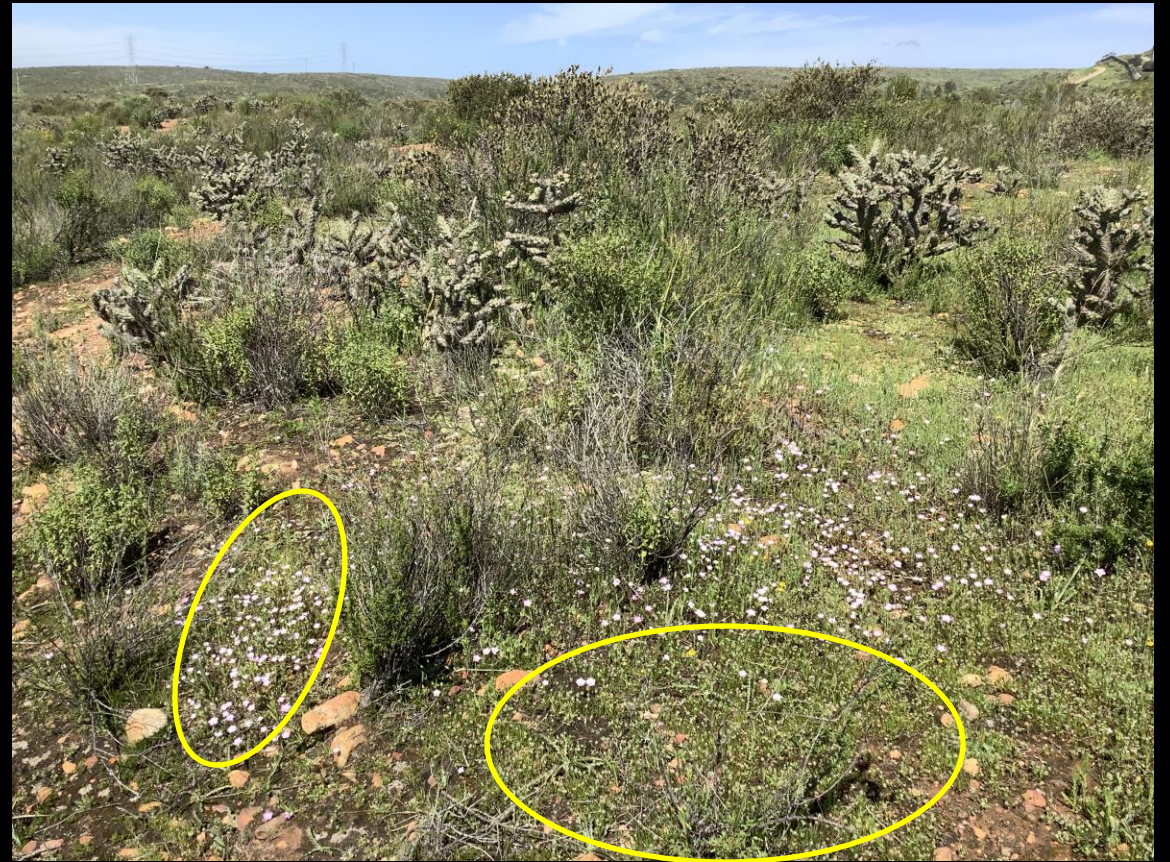
Bomber Fly (*Heterostylum* sp.) Visiting Otay Mesa Mint

2023 Vernal Pool Plant Monitoring Results

- Otay mesa mint
 - Within 29 of 30 pools
 - 15,684 individuals
- California Orcutt grass
 - Within 5 of 30 pools
 - 129 individuals
- San Diego button-celery
 - Within 12 of 30 pools
 - 164 individuals
- Additional non-listed vernal pool indicator species
 - Flowering-quillwort (*Triglochin scilloides*)
 - Annual hair grass (*Deschampsia danthonioides*)
 - Dwarf woollyheads (*Psilocarphus brevissimus*)
 - Adobe popcornflower (*Plagiobothrys acanthocarpus*)
 - Water pygmy-weed (*Crassula aquatica*)
 - Chaffweed (*Lysimachia minima*)

2023 Quino Checkerspot Butterfly Surveys

- Conducted USFWS protocol surveys
- 1 QCB observation in 2023
- 1 QCB observed 2019
- 1 QCB observed in 2013
- 0 QCB observed in 2009 during baseline surveys





QCB Host & Nectar Plant Seed Bulking Program

- Native West Nursery began bulking seed in fall 2021
- Expand area of potential QCB habitat
- Improve quality of QCB habitat by increasing density of host and nectar plants
- Seed application timing is dependent on weather conditions
- December 2023 – a portion of bulked seed distributed on mesa
- A portion of original bulked seed held for additional future bulking

Top: Common Goldfields (*Lasthenia gracilis*) – Nectar Plant

Bottom: Dot-see Plantain (*Plantago erecta*) – Host Plant



Common
Goldfields
(*Lasthenia gracilis*)
Prior to Cleaning





QCB Host & Nectar Plant Seed Bulking Program

- Common Goldfields (*Lasthenia gracilis*) – QCB Nectar Plant
- Dot-seed Plantain (*Plantago erecta*) – QCB Host Plant

Future Plans

- Seed purple owl's-clover (*Castilleja exserta*) at pool edges
- Continue host and nectar plant seed bulking and distribution
- Establish Orcutt grass in more pools
- Continue weed removal
- Focused surveys for QCB
- Focused fairy shrimp surveys





Fish's Milkwort (*Rhinotropis cornuta* var. *fishiae*)
California Native Plant Society Rare Plant Rank 4.3

Come Chat After the Presentations

- City of Chula Vista Booth
- Rare Plant Species New to
Otay Ranch Preserve
- Non-native Plant Species New
to San Diego County



False Hawkbit (*Urospermum picroides*)
Non-native

The background of the slide is a photograph of a sunset over a field of tall, dry grass. The sun is a bright orange circle on the horizon, casting a warm glow across the sky and the field. The grass is dark and silhouetted against the lighter sky.

Thank you!

County of San Diego Parks and Recreation Department – Thank you for hosting!

City of Chula Vista

City of San Diego

California Department of Fish and Wildlife

California Department of Food and Agriculture Plant Pest Diagnostics Center

Mark Doderio

Mulligan Biological Consulting

Native West Nursery

RECON Restoration Crew & Biologists

Sage Vinje Biological

San Diego Association of Governments TransNet Environmental Mitigation Program

San Diego Management and Monitoring Program

San Diego Natural History Museum - BioServices

U.C. Davis - Dr. Eskalen

University of Central Missouri – Dr. Marschalek

U.S. Fish and Wildlife Service

U.S. Geological Survey