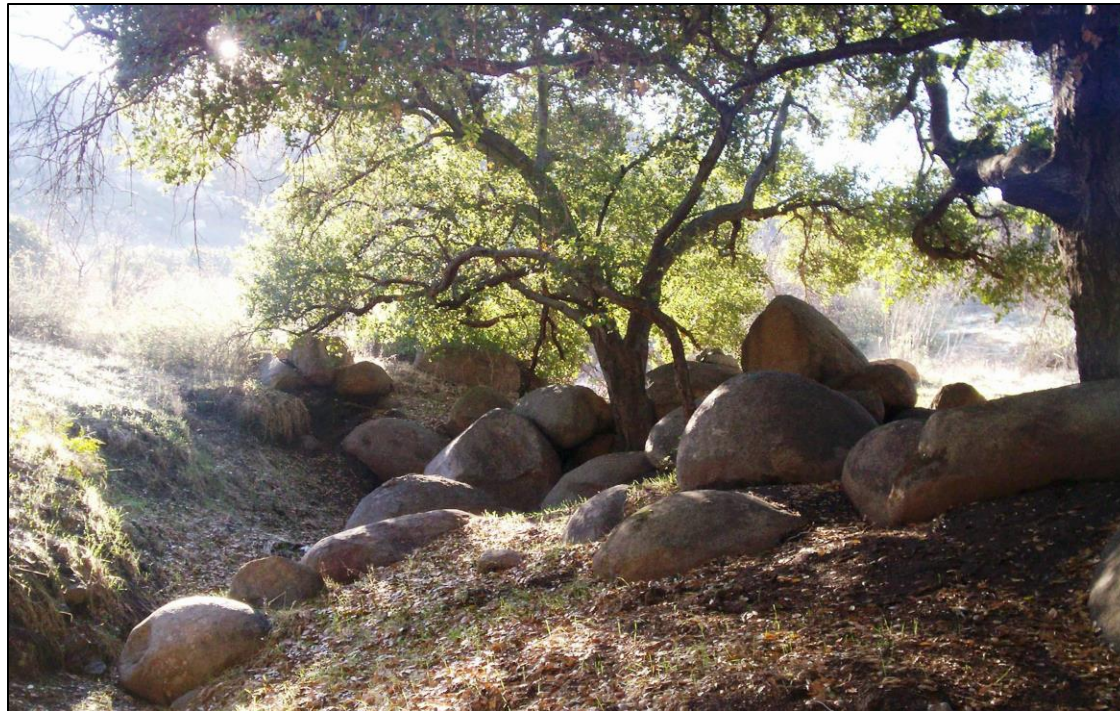
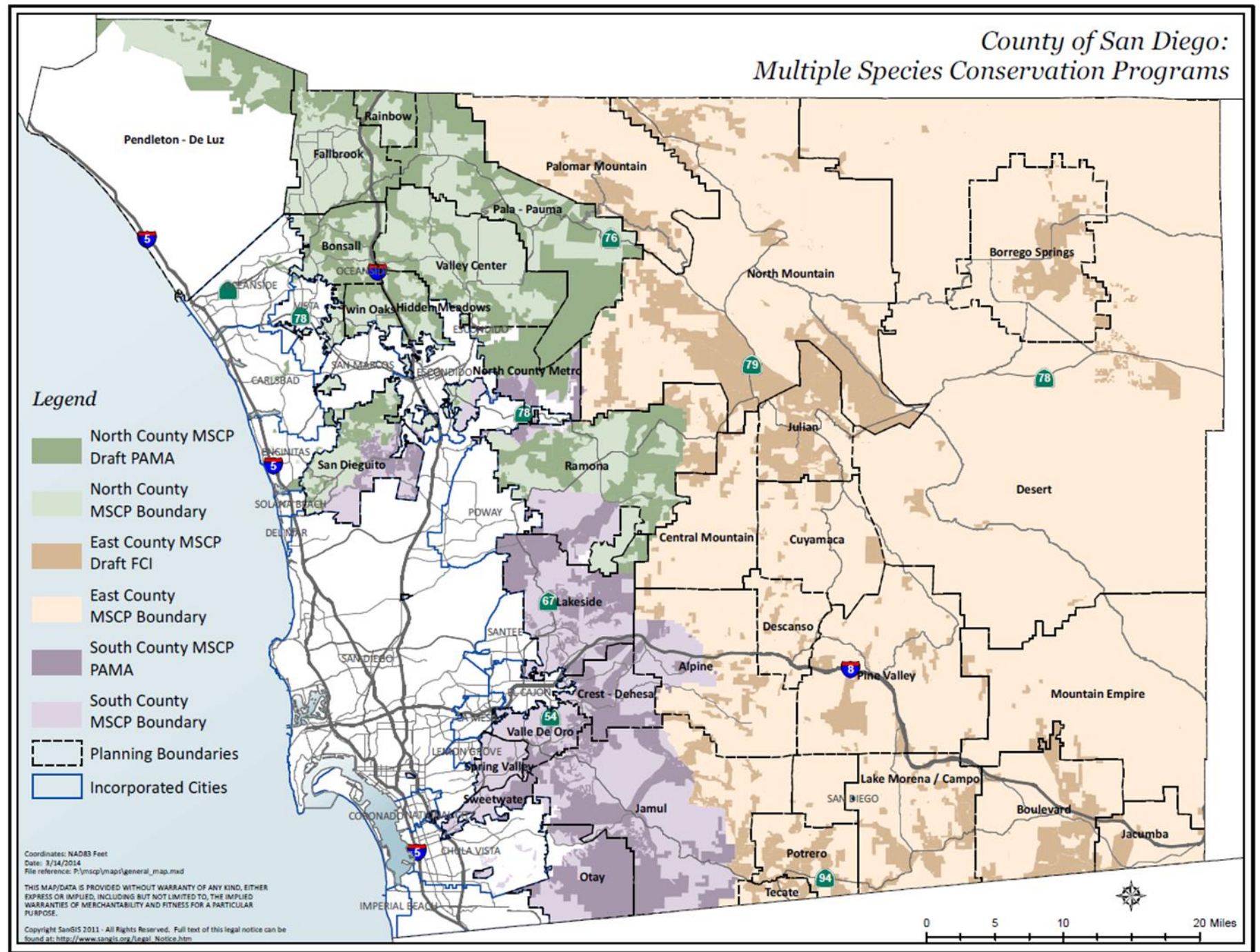


Multiple Species Conservation Program South County Subarea Plan 2018 Annual Report



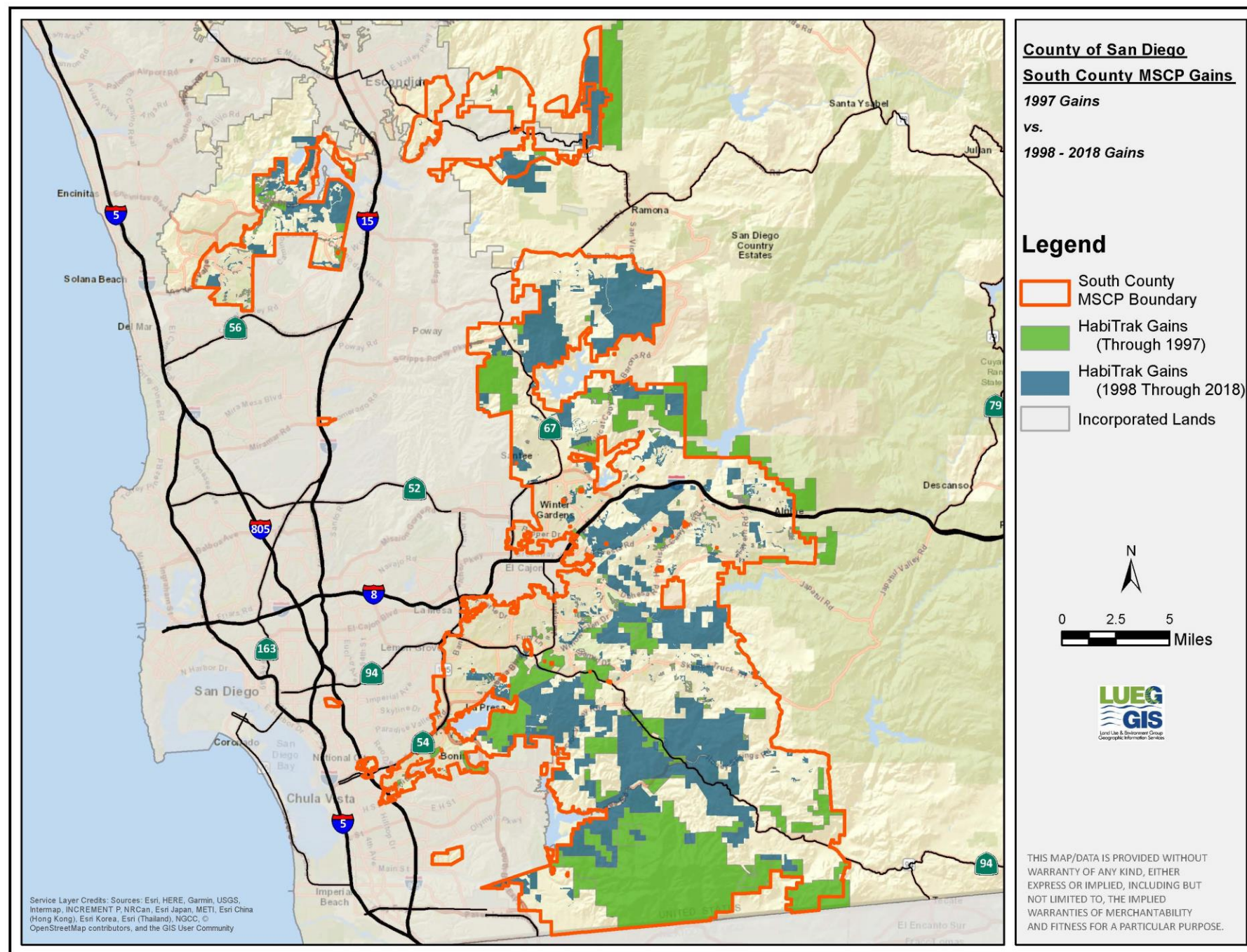
MSCP Plan Areas

- ▶ South County Subarea Plan - adopted 1997
- ▶ Draft North County Plan
- ▶ Future East County Plan



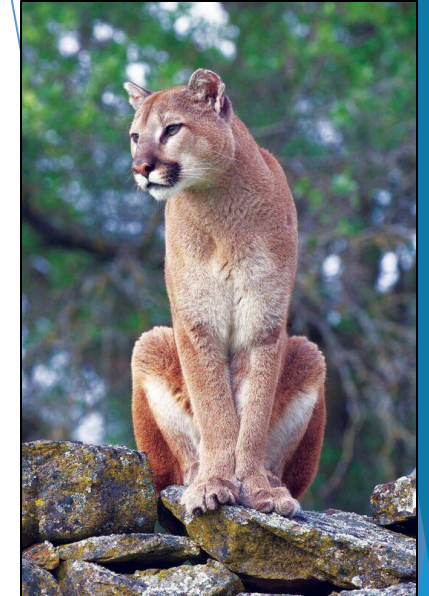
21 Years of Preservation

- ▶ MSCP South County Subarea Plan
 - ▶ 85 covered species
- ▶ Preservation Goal: 98,379 acres
- ▶ MSCP Preserve assembled through 2018: 78,565 acres
- ▶ 80% MSCP Preserve assembled



Benefits Of A Functional MSCP Preserve

- ▶ Preserves San Diego's unique habitats, plants and wildlife
- ▶ Ensures passive recreational opportunities
- ▶ Accommodates future growth
- ▶ Works across political boundaries
- ▶ Ensures compliance with federal and state legislation



2018 MSCP Subarea Plan Acquisitions

- ▶ MSCP Preserve increased by 705 acres
- ▶ The County acquired 349 acres
 - ▶ 19-acre Sycamore Canyon/Goodan Ranch Preserve addition
 - ▶ 75-acre Lakeside Linkage Preserve addition
 - ▶ 255-acre Peutz Valley Preserve
- ▶ 89 acres was gained through federal and state acquisitions
- ▶ 267 acres was gained through private land dedication

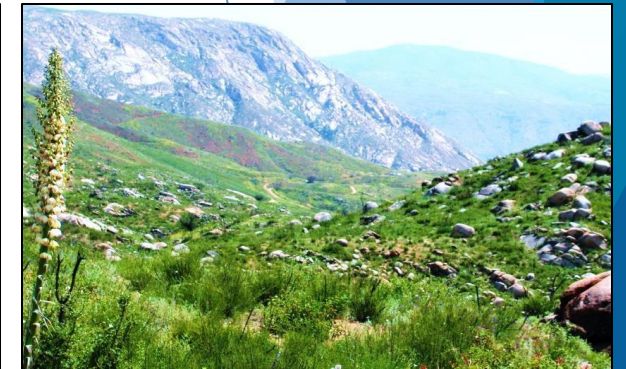
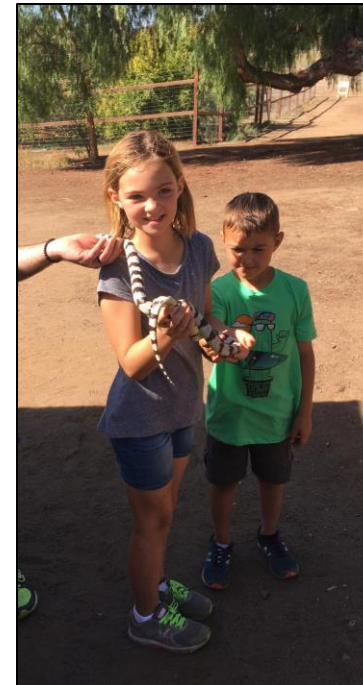


Peutz Valley Preserve



Management and Monitoring

- ▶ Resource Management Plans
 - ▶ County owned and managed Subarea Plan preserves
- ▶ Management Activities
 - ▶ Land stewardship
 - ▶ Habitat management
 - ▶ Public outreach
- ▶ Monitoring
 - ▶ Inventory surveys
 - ▶ Targeted Monitoring Plan



Questions?

