



# Multiple Species Conservation Program South County Subarea Plan 2025 Annual Report

Board of Supervisors

June 10, 2026

Item # 03

# MSCP Implementation

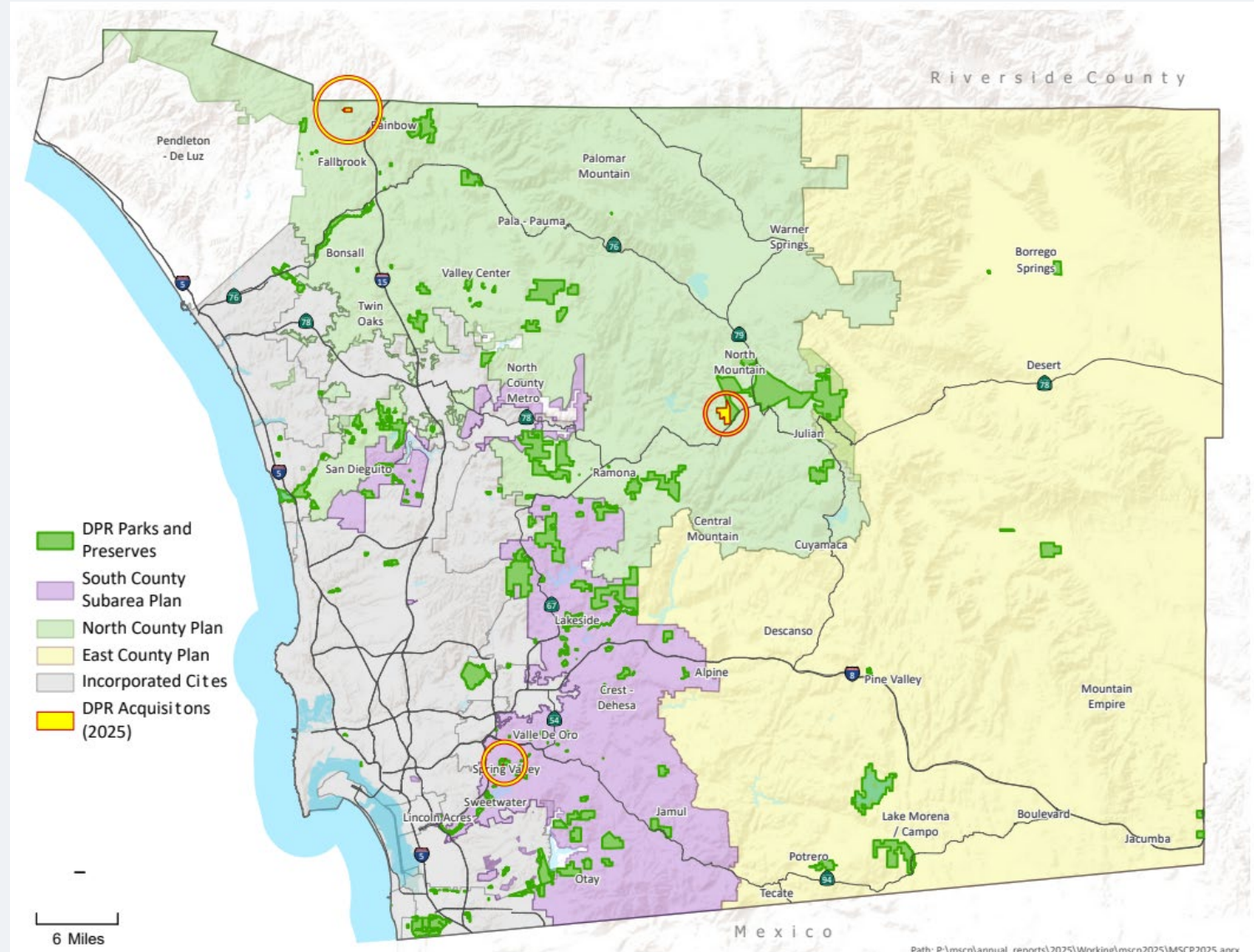
- Acquisition
- Management & Monitoring
- Environmental Education

Dictionary Hill Preserve



# 2025 County Acquisitions

- 47,992 acres of DPR owned preserve lands
- In 2025, DPR acquired 624 acres
  - 1 acre in the South County Plan Area
  - 623 acres in the draft North County Plan Area



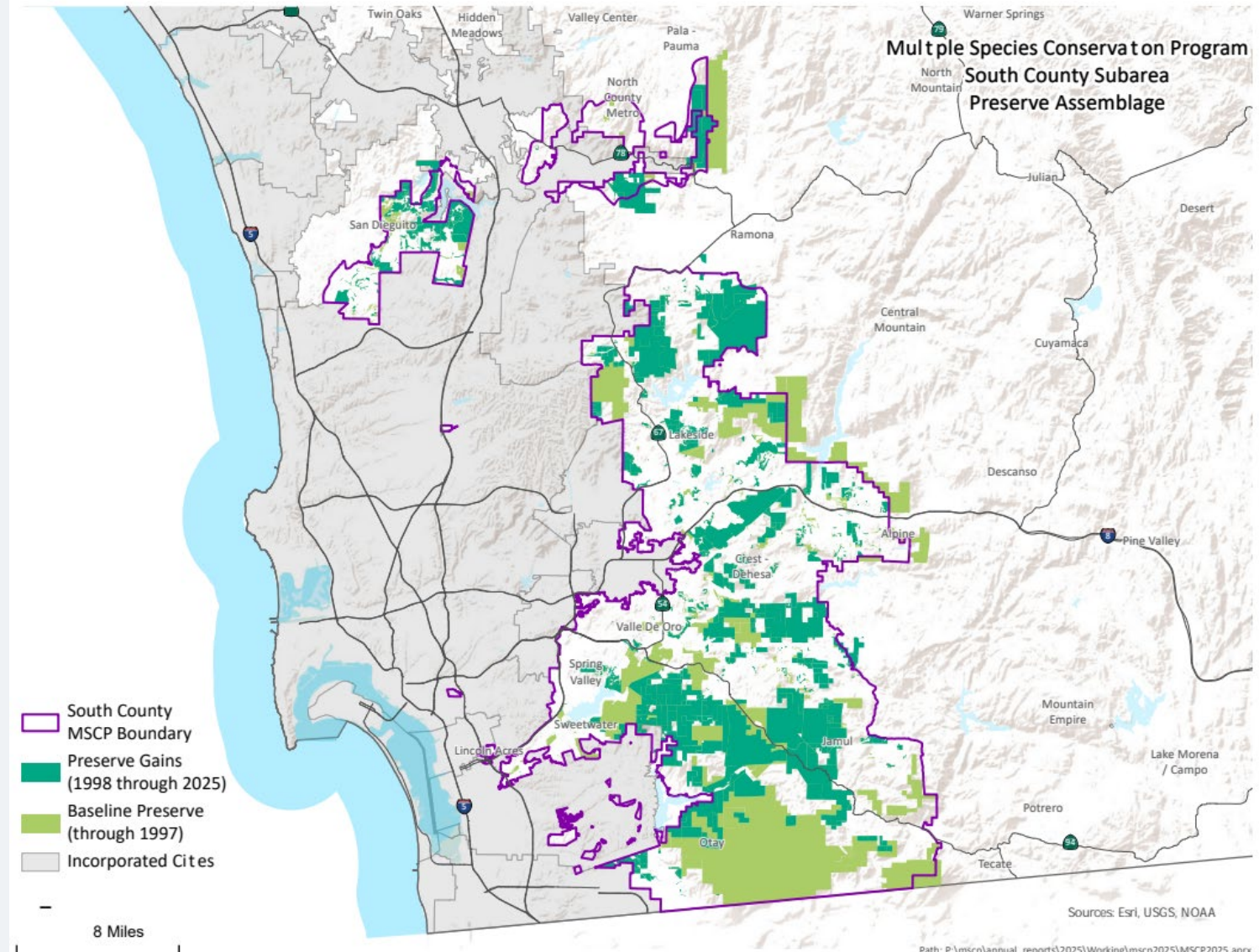
# 28 Years of County Land Preservation

- **Acquisitions Since 1998: 28,872 acres**
  - 8,832 acres in South County Plan Area
  - 17,220 acres in draft North County Plan Area
  - 2,820 acres in future East County Plan Area
- **43 County Preserves created or expanded**
- **Since 1998, a total of \$251 million has been spent on acquisitions**
  - \$154 million County funds
  - \$97 million from partnering entities and grants



# South County Plan Preserve Assembly

- **Preservation Goal:**  
**98,379 acres**
- **Through 2025:**
  - **Preserved**  
**81,914 acres**
  - **83% of Plan Goal**
  - **Includes approx.**  
**13,730 acres of**  
**County preserve**  
**lands**
  - **348 acres added in**  
**2025**



# Management & Monitoring Activities

- **Management Activities**
  - Resource Management Plan
  - Land stewardship
  - Habitat Management and Restoration
- **Monitoring Program**
  - Inventory surveys
  - Targeted Monitoring Plan
  - Regional partnerships

# Management & Monitoring Accomplishments

- **Land Stewardship**
- **Habitat Restoration**
- **Comprehensive Tree Planting**
- **Monitoring**
  - Plant and animal species
  - Special-status species
  - MSCP covered species in South County Plan Area
  - Rare Plant Monitoring



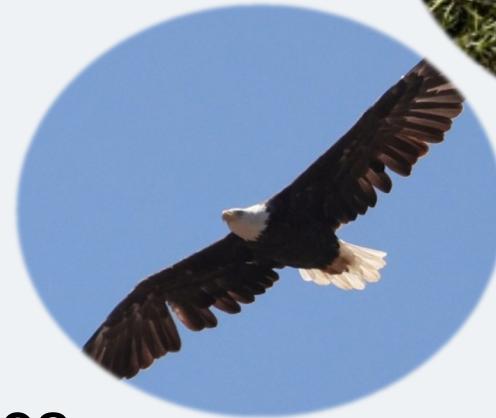
# Educational Outreach

- Reached over 25,000 participants
- Environmental Education Programs
  - Ranger-led hikes
  - Hawktober
  - Hike-a-Thon
  - Green Friday
  - TRACK Trails Program
  - Astronomy Programs
  - San Diego Festival of Science & Engineering
  - Nature Explorers Programs
  - Leave No Trace Program
  - Discovery Program



# Private Development & Mitigation Lands in South County

- **Private Development Projects**
  - Over 4,475 development permits approved since 1998
  - Permitted in 2025:
    - 27 single-family related projects
- **Private Mitigation Lands**
  - 6,819 acres preserved since 1998
  - 72 acres preserved in 2025



# Private Development Resource Management Plans (RMPs)

- **53 Countywide Private RMPs**
  - South - 26 RMPs
  - North - 22 RMPs
  - East - 5 RMPs
- **24 covered species documented**



San Diego Ambrosia



Sticky Dudleya

# Going Forward – Future Goals

- **Acquire the remaining 17% of the South County Plan Preserve**
- **Support the goals of the Climate Action Plan**
- **Update DPR Resource Management Plans (RMPs)**
- **Expand regional monitoring efforts**
- **Expand partnership opportunities**
- **Expand education and outreach programs**
- **Develop and adopt the North and East County Plans**



# Multiple Species Conservation Program South County Subarea Plan 2025 Annual Report

Board of Supervisors

June 10, 2026

Item # 03