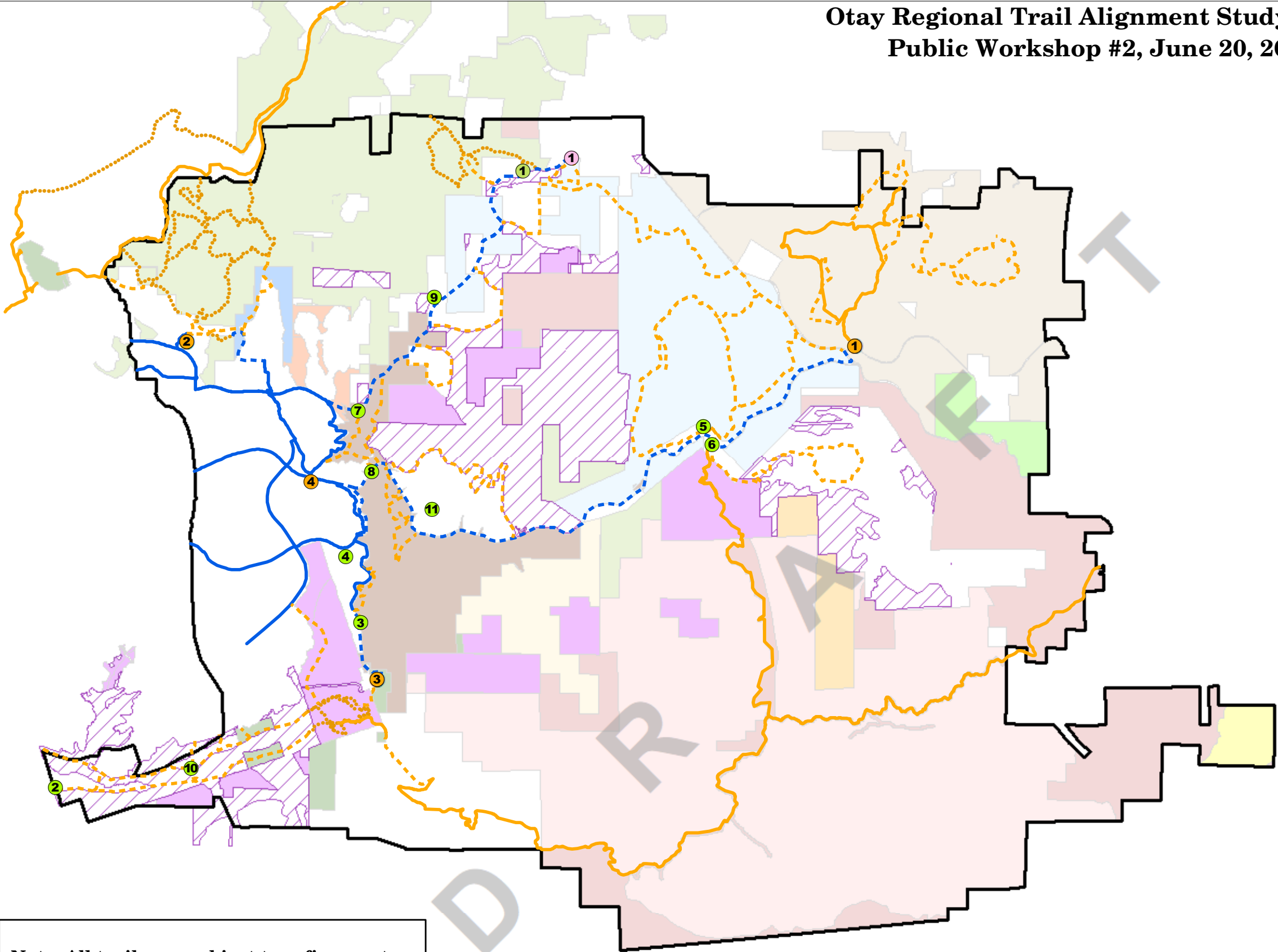


**Otay Regional Trail Alignment Study -  
Public Workshop #2, June 20, 2018**



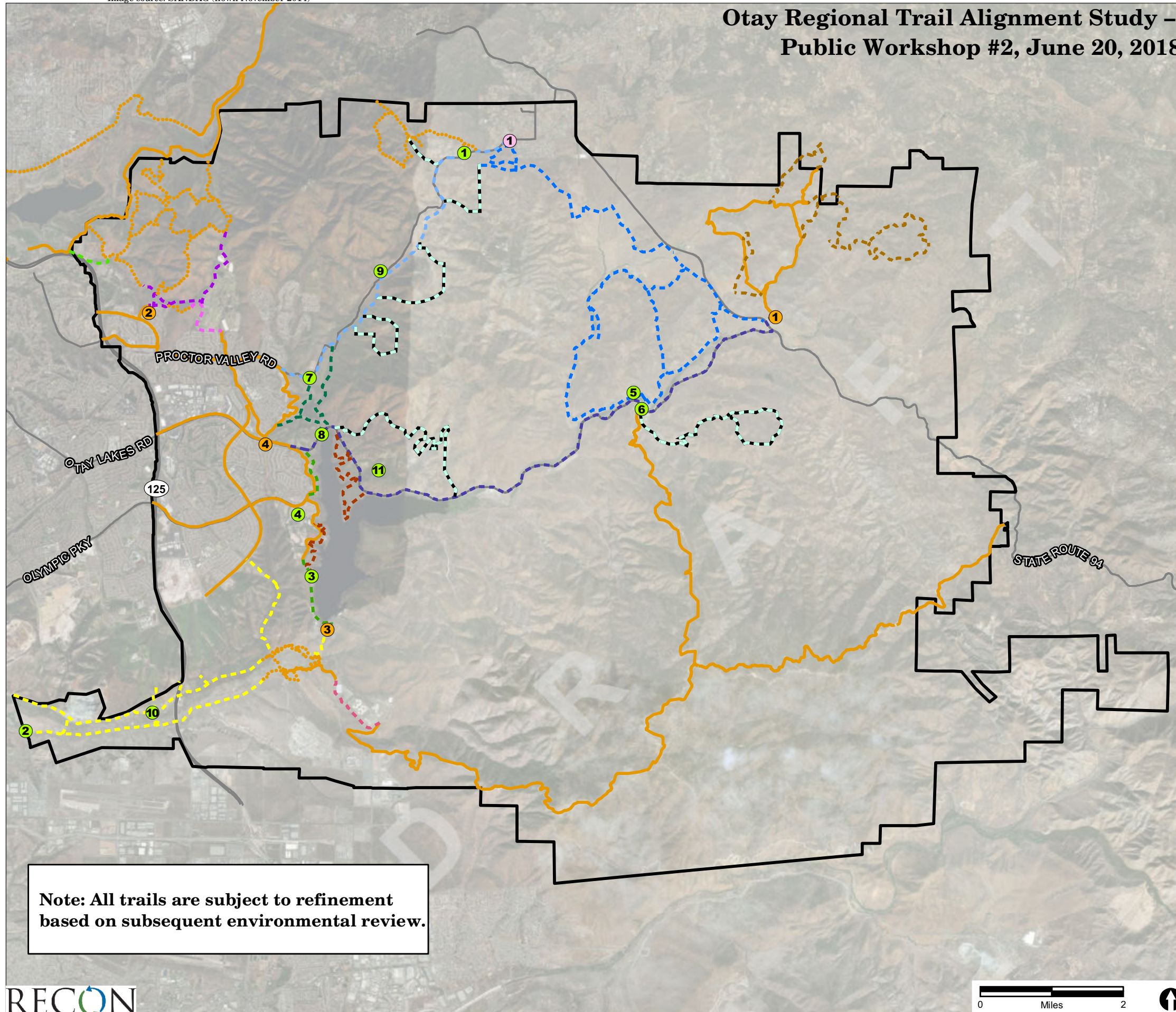
- Otay Trail Study Area
- Existing Trails
- Existing Pathways
- ⋯ Trails Proposed by Other Planning Efforts
- Trails Under Consideration for This Study**  
*Note: Not currently open to the public*
- - - Trails
- - - Pathways
- ① Existing Staging Area
- ② Potential Staging Area
- ③ Potential Trailhead
- Conserved Lands**
- San Diego National Wildlife Refuge
- Lawrence and Barbara Daley Preserve
- Rolling Hills Ranch Preserve
- Otay Mountain Ecological Reserve
- Rancho Jamul Ecological Reserve
- Hollenbeck Canyon Wildlife Area
- City of San Diego Conerstone Lands
- San Miguel HMA
- Otay Ranch Preserve (conveyed parcels)
- BLM Wilderness
- BLM Public Lands
- Kuchamaa ACEC
- Cedar Canyon ACEC
- County DPR Managed Parcels
- Lands Designated for Conservation**
- ▨ Otay Ranch Preserve (to be conveyed)

**Note: All trails are subject to refinement based on subsequent environmental review.**



**FIGURE 1**  
Overview of Trails Under Consideration for Trail Alignment Study

# Otay Regional Trail Alignment Study – Public Workshop #2, June 20, 2018



- Otay Trail Study Area
- Major Arterials
- Existing Staging Area**
  - 1 Hollenbeck Canyon Wildlife Area (Honey Springs Entrance)
  - 2 Mount San Miguel Community Park
  - 3 Otay Lakes County Park
  - 4 Salt Creek Community Park
- Potential Staging Area**
  - 1 Echo Valley
  - 2 Heritage Road (Planning Area 20)
  - 3 Lower Otay Reservoir Boat Launch/Picnic Area (City of San Diego)
  - 4 Chula Vista Elite Athlete Training Center
  - 5 Pio Pico RV Resort North
  - 6 Pio Pico RV Resort South
  - 7 Proctor Valley Natural Resource Area (City of San Diego)
  - 8 Lower Otay Reservoir\*
  - 9 Otay Ranch Village 14
  - 10 Otay Valley Regional Park Area 11 (Community Park)
  - 11 Otay Ranch Village 13
- Potential Trailhead**
  - 1 RJER/Proctor Valley Road
- Trails Under Consideration for This Study**  
*Note: Not currently open to the public*
  - Existing Trails/Pathways
  - Trails Proposed by Other Planning Efforts
  - Upper Otay Lake Loop Trail
  - Rancho Jamul Ecological Reserve Trail System
  - Hollenbeck Canyon Trail System Expansion
  - Sweetwater River Trail Vernal Pool Re-alignment
  - Otay Lakes Road Pathway
  - Otay Mountain Truck Trail Expansion
  - Proctor Valley Road Pathway
  - Lower Otay Lake Trail
  - Mother Miguel-Rockhouse Loop Connector
  - Rolling Hills Ranch Pathway Expansion
  - Otay River Valley Trail
  - Lower Otay Lake Pathway
  - Otay Ranch Village Perimeter/Connector Trails\*\*

\*Staging for Lower Otay Lake Pathway will be determined based on the final configuration of Otay Lakes Road.

\*\*Final alignment to be determined based on development configurations for Otay Ranch.

**Note: All trails are subject to refinement based on subsequent environmental review.**

**FIGURE 2**  
Trails Under Consideration for Trail Alignment Study (Detail)